

This sheet must not be taken from the files without an order from the Chief Topographic Engineer.

NOV 19 1925

DEPARTMENT OF THE INTERIOR
U. S. GEOLOGICAL SURVEY

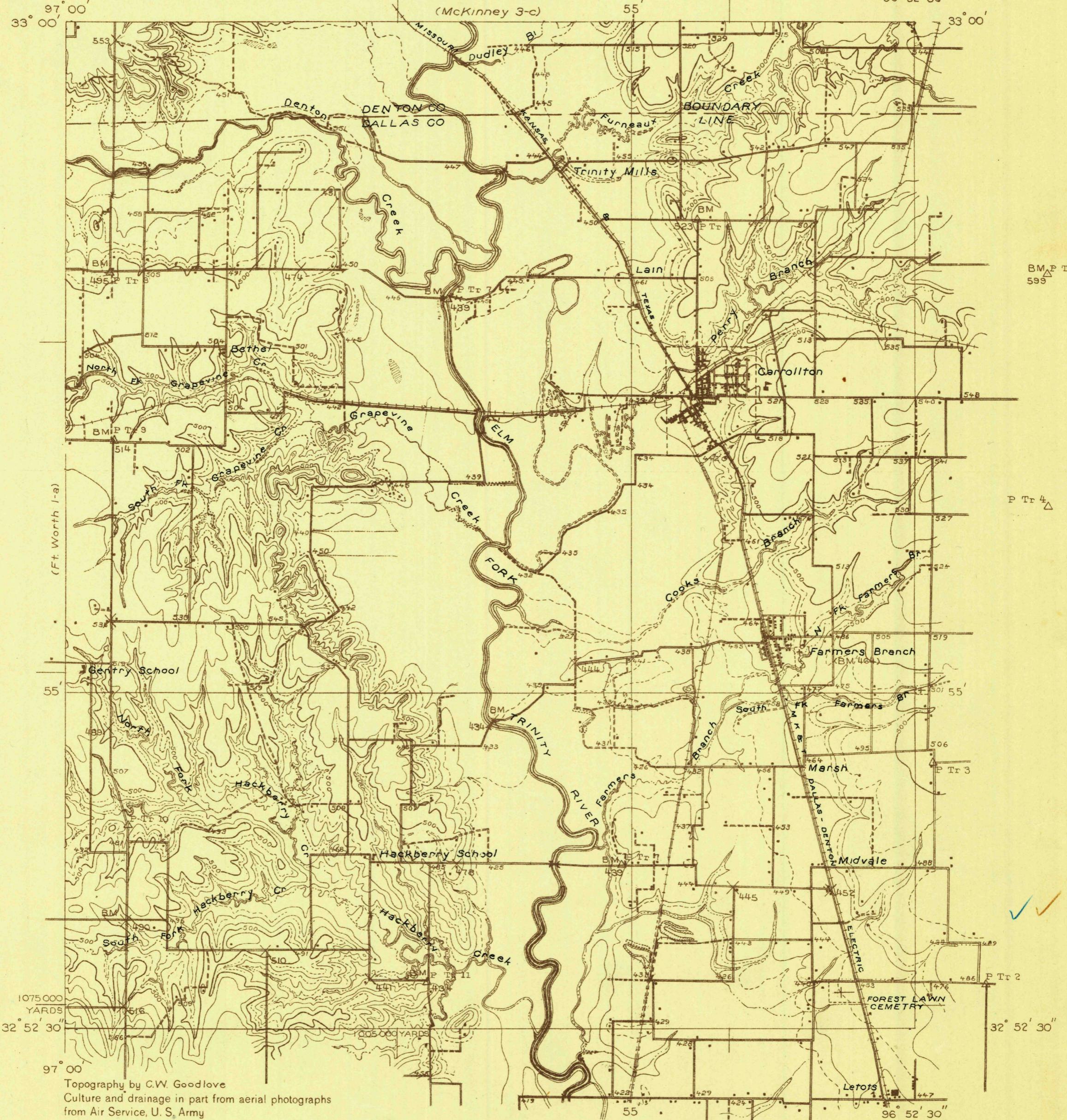
511-N-1-W/2-NW/4
STATE OF TEXAS
BOARD OF WATER ENGINEERS
JOHN A. NORRIS, CHAIRMAN
C. S. CLARK, A. H. DUNLAP
(McKinney 3-c)

Advance sheet
Subject to correction

TEXAS
DALLAS 2-b QUADRANGLE

97° 00'
33° 00'

96° 52' 30"



(Ft. Worth 1-a)

BM P Tr 5
595

P Tr 4

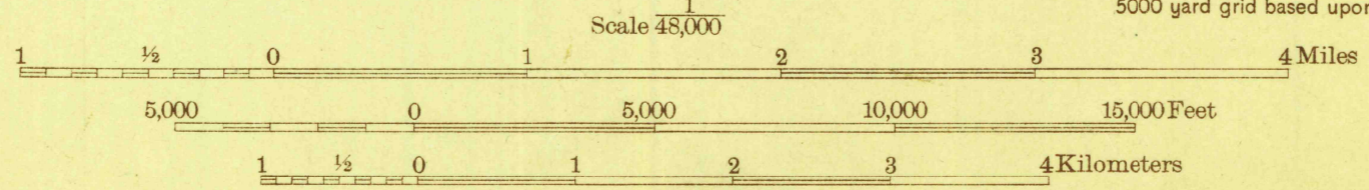
✓

1075 000
YARDS

Topography by C.W. Goodlove
Culture and drainage in part from aerial photographs
from Air Service, U. S. Army
Surveyed in 1925

Polyconic projection. North American datum
5000 yard grid based upon U. S. zone system, D

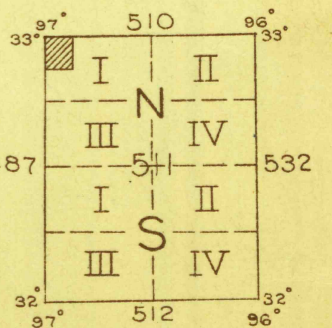
TRUE NORTH
MAGNETIC NORTH
APPROXIMATE MEAN
DECLINATION, 1925



Contour interval 20 feet
10 foot contours in dashed lines
Datum is mean sea level

FILE COPY

DALLAS 2-b, TEX.



MAP OFFICE
GEOLOGICAL SURVEY

RETURN TO:
USGS NHD HISTORICAL MAP ARCHIVES

FILE COPY
MAP INFORMATION

Published as Carrollton partial 15' quad. (Keep for suppl. entries)