

DEPARTMENT OF THE INTERIOR
U. S. GEOLOGICAL SURVEY

488-5-III-E/2-SE/4
STATE OF TEXAS
BOARD OF WATER ENGINEERS
JOHN A. NORRIS, CHAIRMAN
C. S. CLARK, A. H. DUNLAP

Advance sheet
Subject to correction

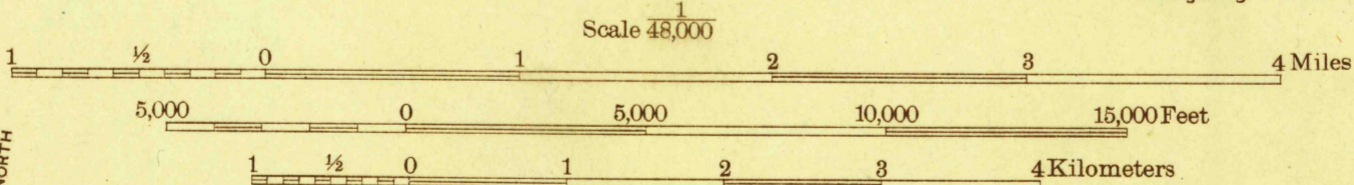
TEXAS
(BELL COUNTY)
GATESVILLE 4-d QUADRANGLE

(Temple 3-b)

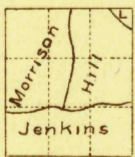


Topography by B.A. Jenkins, Lee Morrison
J.L. Lewis and E.B. Hill
Surveyed in 1924

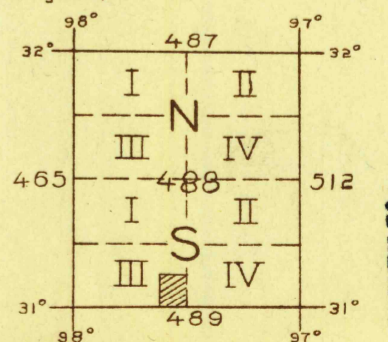
Polyconic projection. North American datum
5000 yard grid based upon U. S. zone system, D



Contour interval 20 feet
Datum is mean sea level



APPROXIMATE MEAN
DECLINATION, 1924



FILE COPY

GATESVILLE 4-d TEX

BOARD OF SURVEYS & MAPS
RECEIVED
JAN 16 1926

MAP INFORMATION OFFICE
GEOLOGICAL SURVEY

RETURN TO:
USGS NHD HISTORICAL MAP ARCHIVES

200 ft interval + 1/2 mile partial 15' grid. (Keep for extra sheets)