

(Georgetown 4-b)

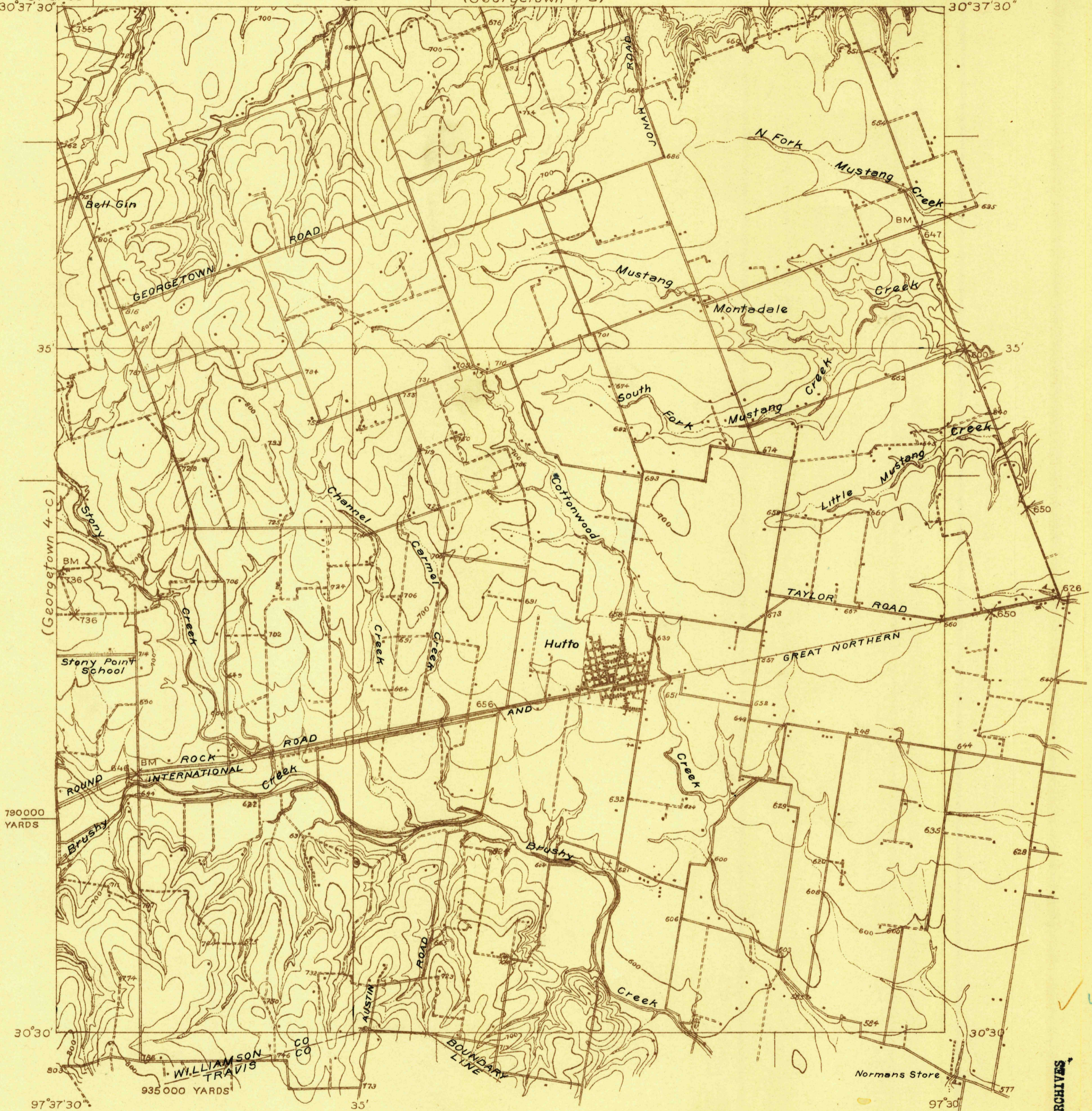
Advance sheet  
Subject to correction

DEPARTMENT OF THE INTERIOR  
U. S. GEOLOGICAL SURVEY

489-N-III-E/2-SE/4  
STATE OF TEXAS  
BOARD OF WATER ENGINEERS  
JOHN A. NORRIS, CHAIRMAN  
C. S. CLARK, A. H. DUNLAP

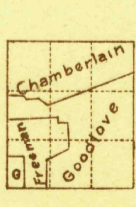
TEXAS  
(WILLIAMSON COUNTY)  
GEORGETOWN 4-d QUADRANGLE

97°37'30" 35' (Georgetown 4-a) 97°30' 30°37'30"

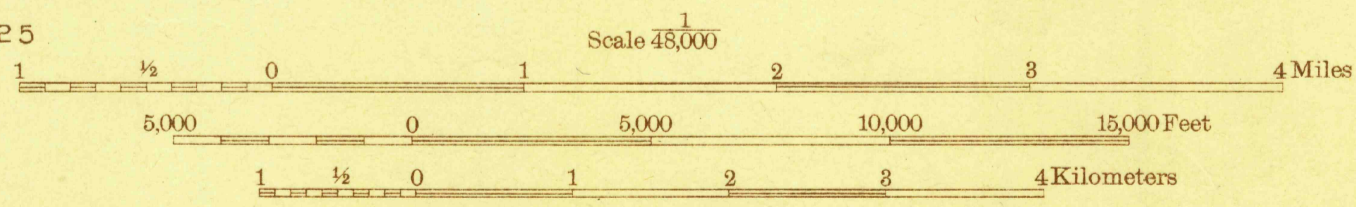


Topography by C.W. Goodlove, R.B. Chamberlain,  
and L.A. Freeman  
Culture and drainage in part from aerial photographs  
from Air Service, U. S. Army  
Surveyed in 1924 and 1925

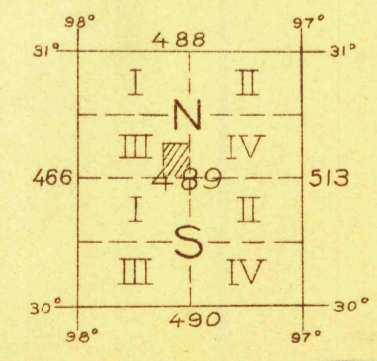
Polyconic projection. North American datum  
5000 yard grid based upon U. S. zone system, D



APPROXIMATE MEAN  
DECLINATION, 1925

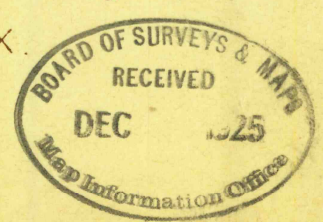


Contour interval 20 feet  
10 foot contours in dashed lines  
Datum is mean sea level



GEORGETOWN 4-d, TEX.

Board of Surveys & Maps  
FILE COPY  
Map Information Office



RETURN TO:  
V896 AND HISTORICAL MAP ARCHIVES