

DEPARTMENT OF THE INTERIOR
U. S. GEOLOGICAL SURVEY

463-S-III-E/2-SW/4
STATE OF TEXAS
BOARD OF WATER ENGINEERS
JOHN A. NORRIS, CHAIRMAN
C. S. CLARK, A. H. DUNLAP

Advance sheet
Subject to correction

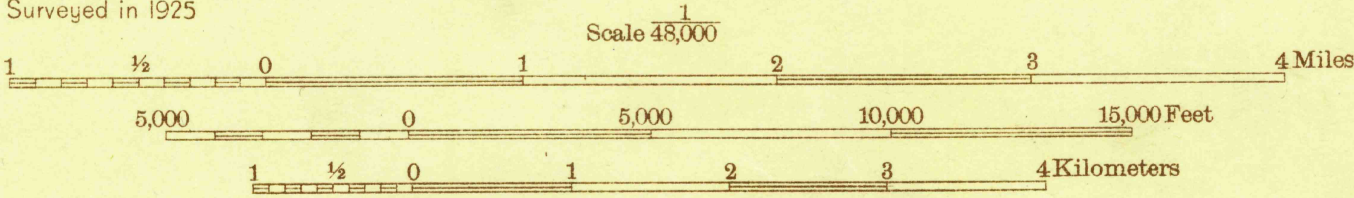
TEXAS
(YOUNG COUNTY)
GRAHAM 4-c QUADRANGLE



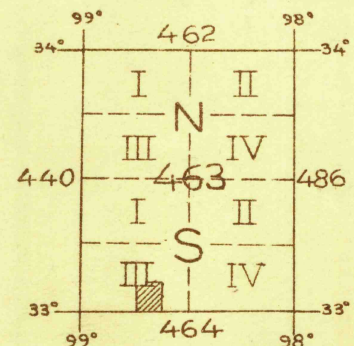
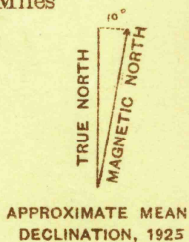
Topography by Max J. Gleissner
Culture and drainage in part from aerial photographs
from Air Service, U. S. Army
Surveyed in 1925

825 000 YARDS

Polyconic projection. North American datum
5000 yard grid based upon U. S. zone system, D

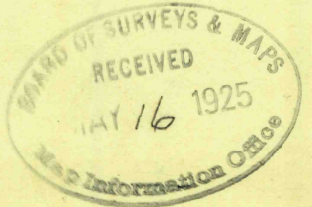


Contour interval 20 feet
Datum is mean sea level



GRAHAM 4-c, TEXAS

Board of Surveys & Maps
FILE COPY
Map Information Office



RETURN TO:
USGS AND HISTORICAL MAP ARCHIVES