

DEPARTMENT OF THE INTERIOR  
U. S. GEOLOGICAL SURVEY

463-S-111-E/2-SE/4  
STATE OF TEXAS  
BOARD OF WATER ENGINEERS  
JOHN A. NORRIS, CHAIRMAN  
C. S. CLARK, A. H. DUNLAP

Advance sheet  
Subject to correction

TEXAS  
(YOUNG COUNTY)  
GRAHAM 4-d QUADRANGLE



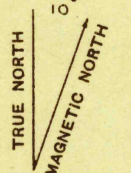
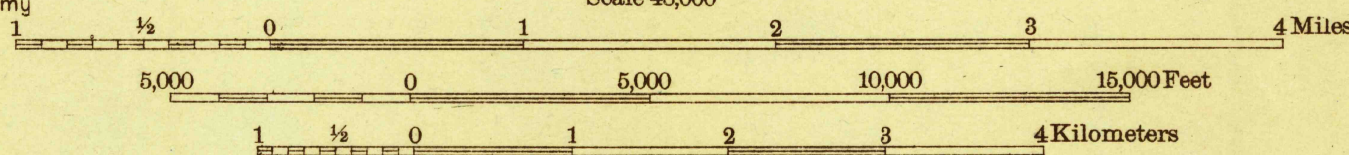
1 095 000  
YARDS

Topography by M. J. Gleissner  
Culture and drainage in part from aerial photographs  
from Air Service, U. S. Army  
Surveyed in 1924

(Breckenridge 1-a)

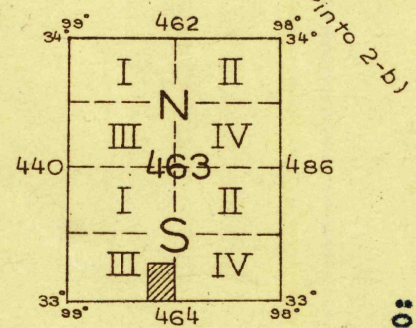
Polyconic projection. North American datum  
5000 yard grid based upon U. S. zone system, D

Scale 48,000

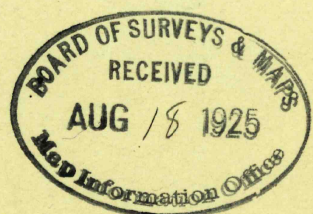


APPROXIMATE MEAN  
DECLINATION, 1924

Contour interval 20 feet  
Datum is mean sea level



GRAHAM 4-d, TEX.



Board of Surveys & Maps  
FILE COPY  
Map Information Office

RETURN TO:  
USGS NMD HISTORICAL MAP ARCHIVES