

(Granbury 2-a)
97° 45' 00"
32° 22' 30"

487-S-1-E/2-SW/4
STATE OF TEXAS
BOARD OF WATER ENGINEERS
JOHN A. NORRIS, CHAIRMAN
C. S. CLARK, A. H. DUNLAP

Advance sheet
Subject to correction

TEXAS
GRANBURY I-c QUADRANGLE

(Granbury I-b)

40'

97° 37' 30"
32° 22' 30"



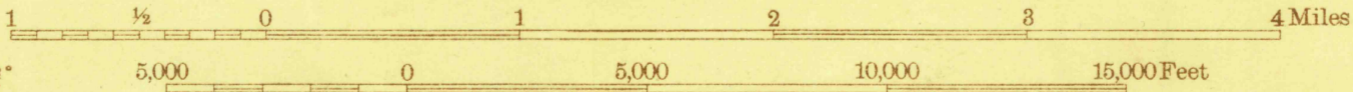
100000 YARDS

925000 YARDS

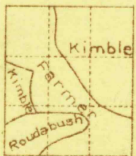
Topography by M.A. Roudapush, 3D. Farmer,
and Delar Kimble
Surveyed in 1924

Scale 48,000

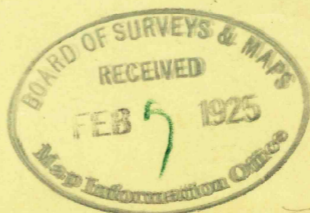
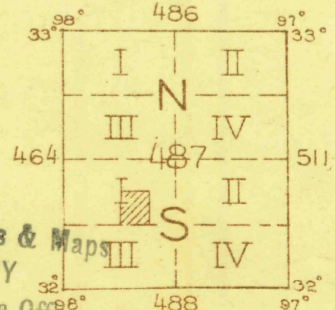
Polyconic projection. North American datum
5000 yard grid based upon U. S. zone system, D



Contour interval 20 feet
Datum is mean sea level



APPROXIMATE MEAN
DECLINATION, 1924



Board of Surveys & Maps
FILE COPY
Map Information Office

GRANBURY I-c, TEX.

RETURN TO:
USGS NHD HISTORICAL MAP ARCHIVES