

Marquez No. 496° 15'

513-N-11-E/2-NW/4  
STATE OF TEXAS  
BOARD OF WATER ENGINEERS  
JOHN A. NORRIS, CHAIRMAN  
C. S. CLARK, A. H. DUNLAP

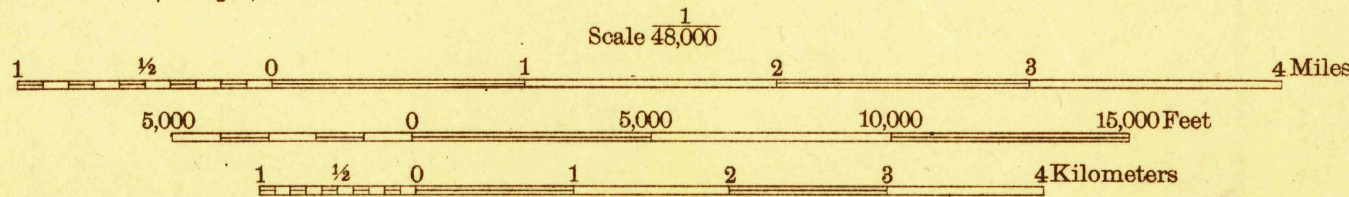
Advance sheet  
Subject to correction

TEXAS  
IOLA NO. 2 QUADRANGLE



Topography by Lee Morrison and Crawford Dickey  
Culture and drainage in part from aerial photographs  
by Air Service, U. S. Army  
Surveyed in 1925

Polyconic projection. North American datum  
5000 yard grid based upon U. S. zone system, D

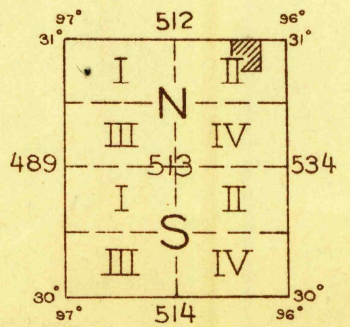


Contour interval 20 feet  
10 foot contours in dashed lines  
Datum is mean sea level

IOLA NO. 2, TEX.



TRUE NORTH  
MAGNETIC NORTH  
APPROXIMATE MEAN  
DECLINATION, 1925



FILE COPY

MAP INFORMATION OFFICE  
GEOLOGICAL SURVEY

ENGR AS IOLA 15' PARTIAL  
BUT SUPPL CONTRS DROPPED

IOLA 2, Tex