

U. S. G. S.  
**FILE COPY**  
Inspection and Editing.

Advance sheet  
Subject to correction

512-S-IV-W/2-SE/4  
STATE OF TEXAS  
BOARD OF WATER ENGINEERS  
JOHN A. NORRIS, CHAIRMAN  
C. S. CLARK, A. H. DUNLAP

DEPARTMENT OF THE INTERIOR  
U. S. GEOLOGICAL SURVEY

TEXAS  
MARQUEZ NO 4 QUADRANGLE

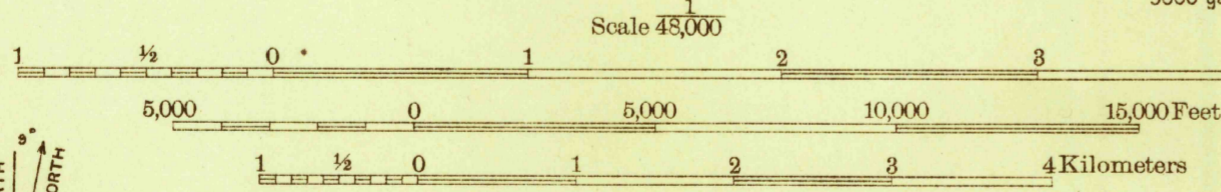


Topography by G. S. Druhot, and A. W. Plushnick  
Culture and drainage in part from aerial photographs  
from Air Service U. S. Army  
Surveyed in 1924-1925

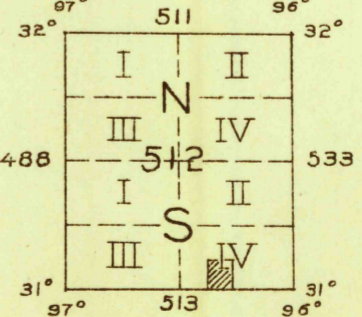
Polyconic projection North American datum.  
5000 yard grid based upon U. S. zone system, D



APPROXIMATE MEAN  
DECLINATION, 1925



Scale 48,000  
1 1/2 0 1 2 3 4 Miles  
5,000 0 5,000 10,000 15,000 Feet  
1 1/2 0 1 2 3 4 Kilometers



MARQUEZ NO 4 TEX

RETURN TO:  
USGS AND HISTORICAL MAP ARCHIVES

FILE COPY

U. S. G. S.  
**FILE COPY**  
MAP INFORMATION  
GEOLOGICAL SURVEY  
Inspection and Editing.