

U. S. G. S.
FILE COPY
Inspection and Editing.

DEPARTMENT OF THE INTERIOR
U. S. GEOLOGICAL SURVEY

491-S-111-W/2-SW/4
STATE OF TEXAS
BOARD OF WATER ENGINEERS
JOHN A. NORRIS, CHAIRMAN
C. S. CLARK, A. H. DUNLAP
(Mathis No. 2)

Advance sheet
Subject to correction

TEXAS
MATHIS NO. 3 QUADRANGLE

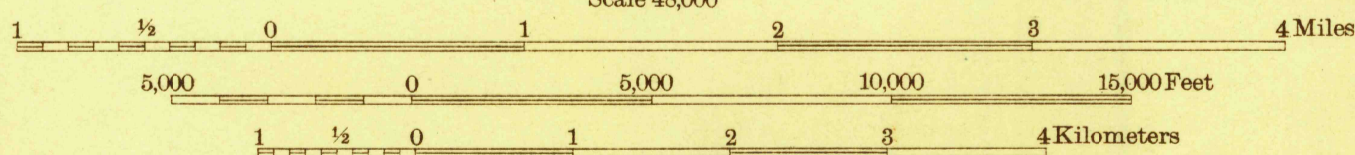


Topography by C.W. Goodlove and H.S. Milsted
Culture and drainage in part from aerial photographs
from Air Service, U. S. Army
Surveyed in 1925

Polyconic projection. North American datum
5000 yard grid based upon U. S. zone system, D

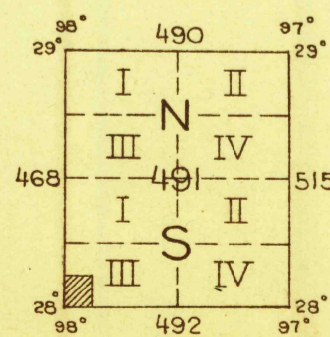
Goodlove

TRUE NORTH
MAGNETIC NORTH
APPROXIMATE MEAN
DECLINATION, 1925



Contour interval 20 feet
10 foot contours in dashed lines
Datum is mean sea level

MATHIS NO. 3, TEX.



RETURN TO:
USGS AND HISTORICAL MAP ARCHIVES

FILE COPY

U. S. G. S.
FILE COPY
Inspection and Editing.

MAP INFORMATION OFFICE
GEOLOGICAL SURVEY