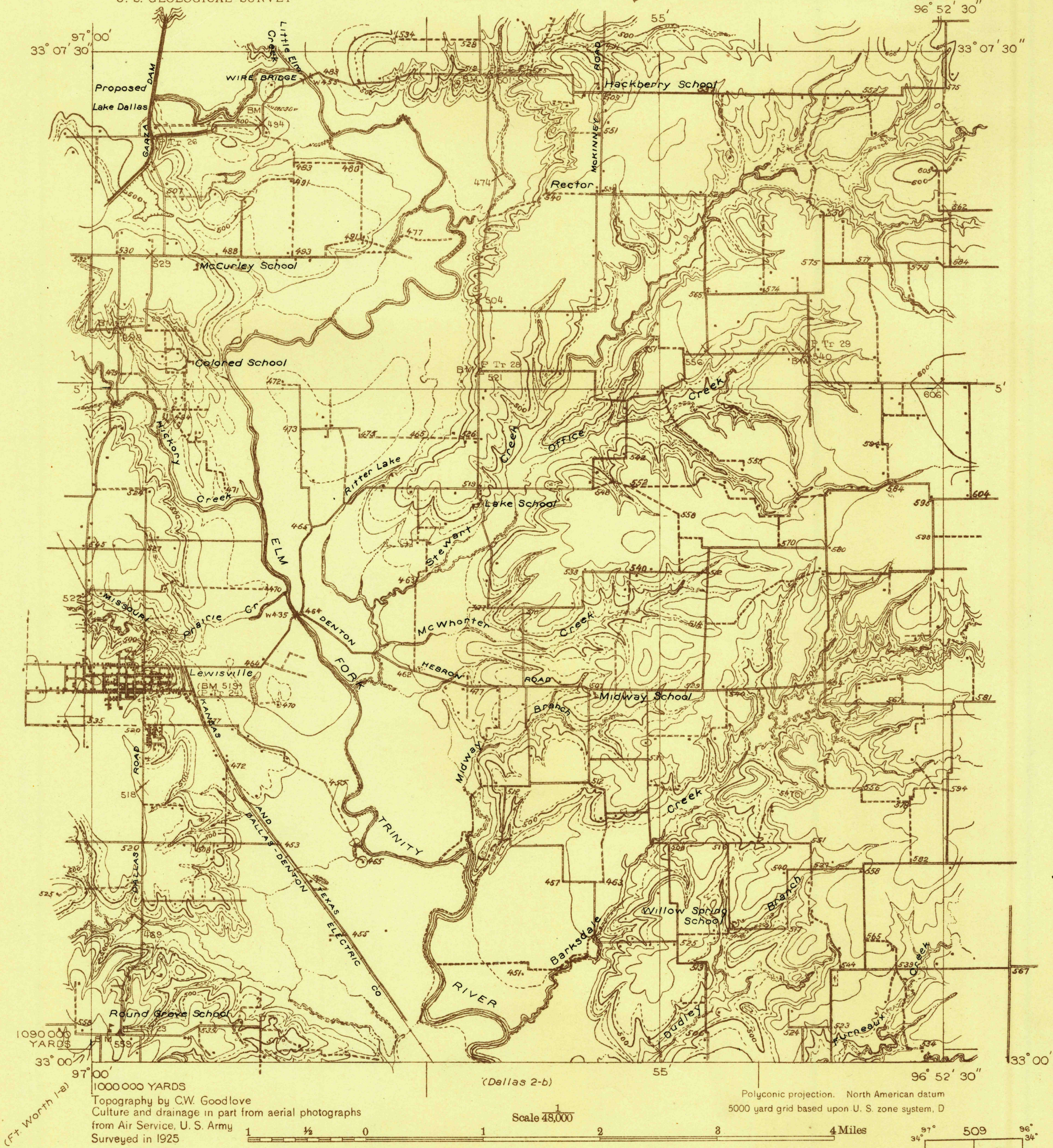


DEPARTMENT OF THE INTERIOR
U. S. GEOLOGICAL SURVEY

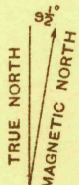
510-S-111-W/2-SW/4
STATE OF TEXAS
BOARD OF WATER ENGINEERS
JOHN A. NORRIS, CHAIRMAN
C. S. CLARK, A. H. DUNLAP

Advance sheet
Subject to correction

TEXAS
(DENTON COUNTY)
McKINNEY 3-c QUADRANGLE



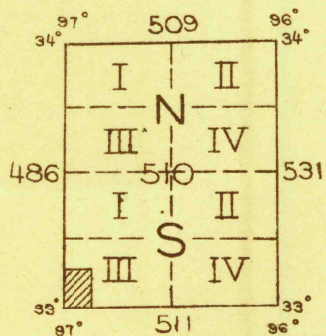
Topography by C.W. Goodlove
Culture and drainage in part from aerial photographs
from Air Service, U. S. Army
Surveyed in 1925



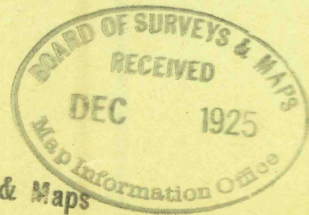
APPROXIMATE MEAN
DECLINATION, 1925

Contour interval 20 feet
10 foot contours in dashed lines
Datum is mean sea level

McKINNEY 3-c, TEX.



RETURN TO:
USGS AND HISTORICAL MAP ARCHIVES



Board of Surveys & Maps
FILE COPY
Map Information Office