

DEPARTMENT OF THE INTERIOR
U. S. GEOLOGICAL SURVEY

467-N-IV-E/2-SE/4
STATE OF TEXAS
BOARD OF WATER ENGINEERS
JOHN A. NORRIS, CHAIRMAN
C. S. CLARK, A. H. DUNLAP
(New Braunfels No 1)

Advance sheet
Subject to correction

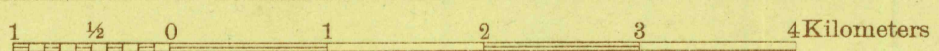
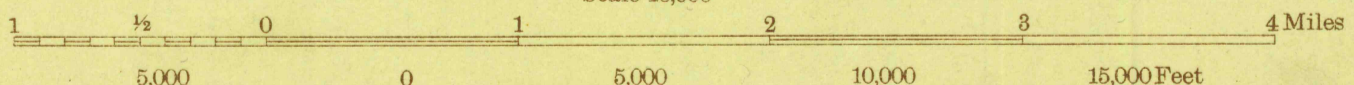
TEXAS
(GUADALUPE COUNTY)
NEW BRAUNFELS NO. 4 QUADRANGLE



670 000 YARDS

Topography by B.A. Jenkins
Control in part by U. S. Coast and Geodetic Survey
Surveyed in 1924

Polyconic projection. North American datum
5000 yard grid based upon U. S. zone system, D



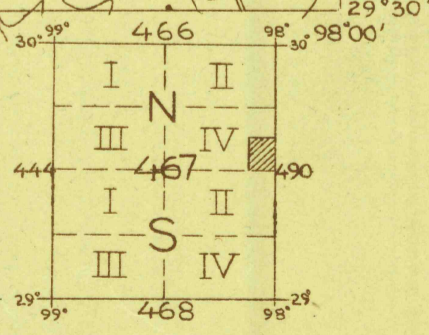
Contour interval 20 feet
A few 10 foot contours added in dashed lines
Datum is mean sea level

Culture and drainage in part from aerial photographs
from Air Service, U. S. Army

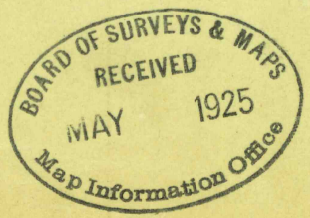
NEW BRAUNFELS NO. 4, TEXAS

TRUE NORTH
MAGNETIC NORTH

APPROXIMATE MEAN
DECLINATION, 1924



RETURN TO:
USGS AND HISTORICAL MAP ARCHIVES



Board of Surveys & Maps
FILE COPY
Map Information Office