

DEPARTMENT OF THE INTERIOR
U. S. GEOLOGICAL SURVEY

464-N-11-E/2-NW/4
STATE OF TEXAS
BOARD OF WATER ENGINEERS
JOHN A. NORRIS, CHAIRMAN
C. S. CLARK, A. H. DUNLAP

Advance sheet
Subject to correction

TEXAS
(PALO PINTO COUNTY)
PALO PINTO 1-b QUADRANGLE



(Palo Pinto 2-a)

1080000
YARDS

32°52'30"

875000 YARDS

(Palo Pinto 1-c)

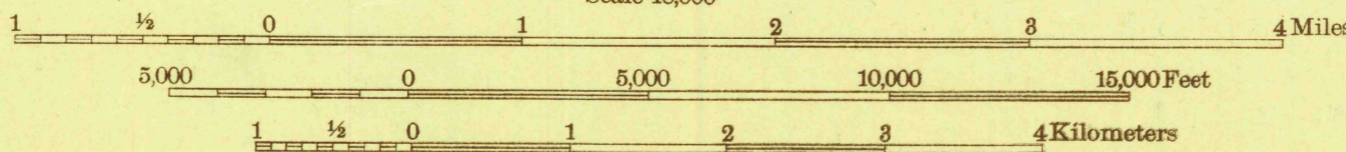
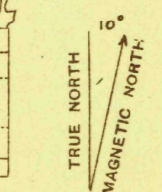
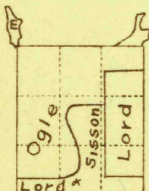
10'

32°52'30"

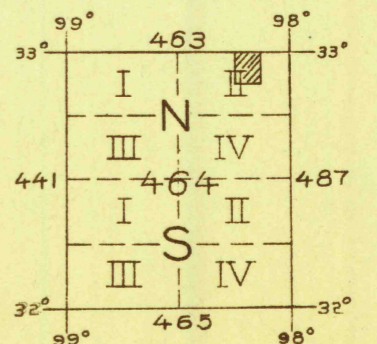
Topography by A. J. Ogle, G. E. Sisson, I. Q. Lord,
and Ward Eison,
Surveyed in 1924

Polyconic projection. North American datum
5000 yard grid based upon U. S. zone system, D

(Palo Pinto 2-d)



Contour interval 20 feet
10 foot contours in dashed lines
Datum is mean sea level



BOARD OF SURVEYS & MAPS
RECEIVED
SEP 6 1925
Map Information Office

Board of Surveys & Maps
FILE COPY
Map Information Office

PALO PINTO 1-b TEXAS