

DEPARTMENT OF THE INTERIOR  
U. S. GEOLOGICAL SURVEY

464-N-11-W/2-NW/4  
STATE OF TEXAS  
BOARD OF WATER ENGINEERS  
JOHN A. NORRIS, CHAIRMAN  
C. S. CLARK, A. H. DUNLAP

Advance sheet  
Subject to correction

TEXAS  
PALO PINTO 2-b QUADRANGLE



1080 000  
YARDS  
Brazos

32° 52' 30"  
98° 30'

850 000 YARDS (Palo Pinto 2-c)

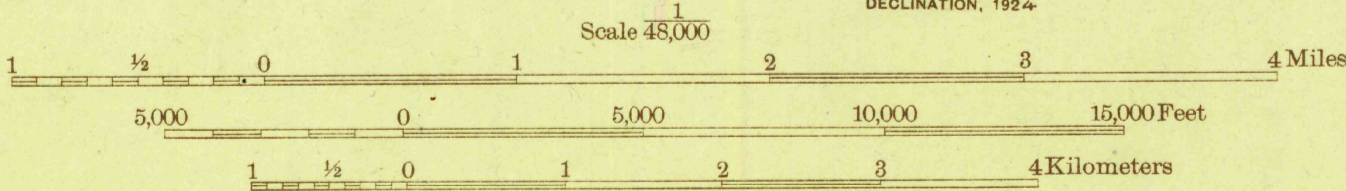
32° 52' 30"  
98° 22' 30" (Palo Pinto 2-d)

Topography by J.B. Leavitt, M. J. Gleissner,  
F.H. Sargent, and G.A. Mock  
Surveyed in 1924

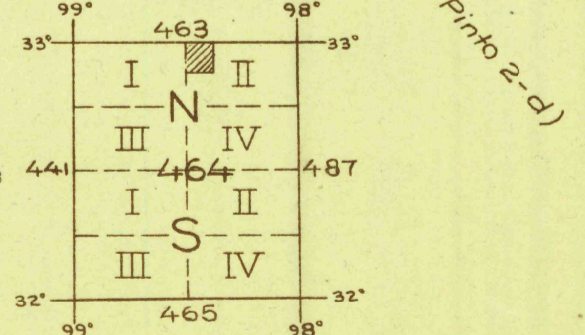


TRUE NORTH  
MAGNETIC NORTH  
APPROXIMATE MEAN  
DECLINATION, 1924

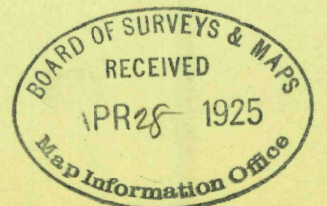
Polyconic projection. North American datum  
5000 yard grid based upon U. S. zone system, D



Contour interval 20 feet  
A few 10 foot contours added in dashed lines  
Datum is mean sea level



PALO PINTO 2-b, TEXAS



Board of Surveys & Maps  
FILE COPY  
Map Information Office