

DEPARTMENT OF THE INTERIOR
U. S. GEOLOGICAL SURVEY

465-S-111-E/2-NE/4
STATE OF TEXAS
BOARD OF WATER ENGINEERS
JOHN A. NORRIS, CHAIRMAN
C. S. CLARK, A. H. DUNLAP

TEXAS
SAN SABA 4-a QUADRANGLE

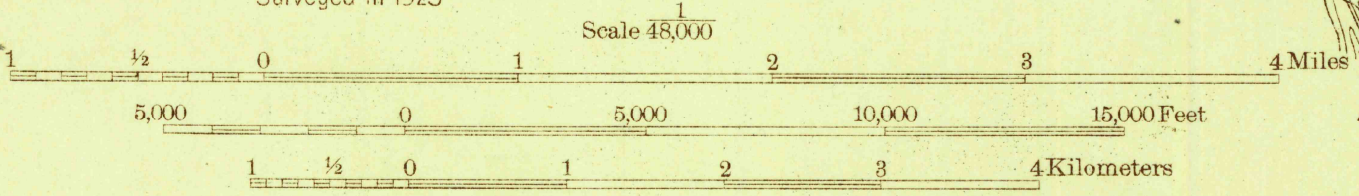
Advance sheet
Subject to correction

(San Saba 1-c)

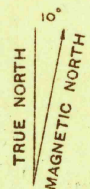
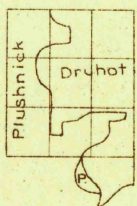
(San Saba 1-d)



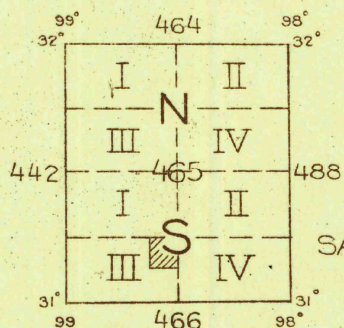
Topography by GS Druhot and AW. Plushnick
Culture and drainage in part compiled from aerial photographs
taken by Air Corps, U. S. Army
Control by U. S. Geological Survey
Surveyed in 1925



Contour interval 20 feet
10 foot contours in dashed lines
Datum is mean sea level



APPROXIMATE MEAN
DECLINATION, 1925



SAN SABA 4-a, TEX.

Polyconic projection. North American datum
5000 yard grid based upon U. S. zone system, D