

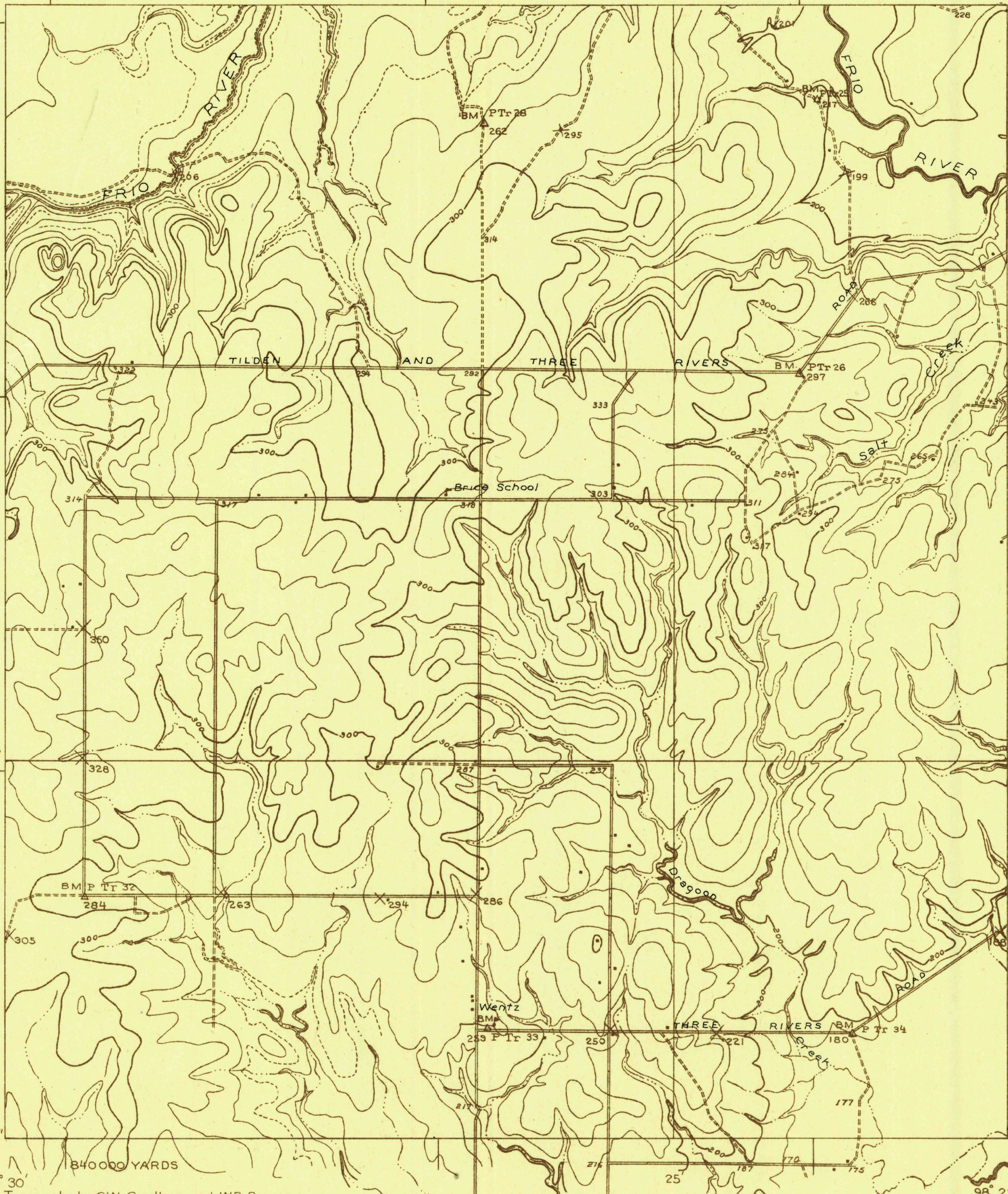
DEPARTMENT OF THE INTERIOR
U. S. GEOLOGICAL SURVEY

468-S-11-W/2-NW/4
STATE OF TEXAS
BOARD OF WATER ENGINEERS
JOHN A. NORRIS, CHAIRMAN
C. S. CLARK, A. H. DUNLAP
(Crowther No 3)

TEXAS
(Mc MULLEN COUNTY)
SIMMONS NO. 2 QUADRANGLE

Advance sheet
Subject to correction

98° 30' 28' 30" 25' 98° 22' 30" 28° 30'



(Tilden No. 1)

(Simmons No. 1)

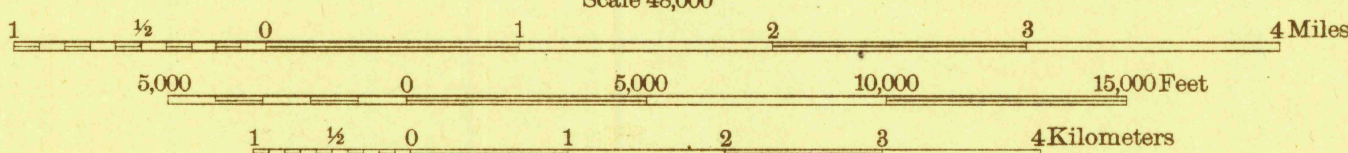
535 000 YARDS

840000 YARDS

Topography by C.W. Goodlove and W.B. Brewer
Culture and drainage in part from aerial photographs
by Air Service, U. S. Army
Control by U. S. Geological Survey
Surveyed in 1925

Polygonic projection. North American datum
5000 yard grid based upon U. S. zone system, D

Scale 48,000



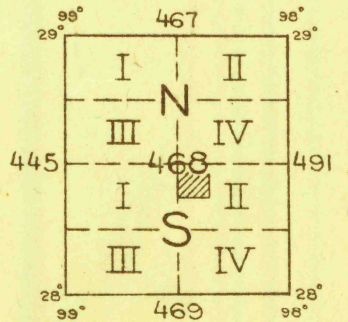
Contour interval 20 feet
10 foot contours in dashed lines
Datum is mean sea level

SIMMONS NO. 2, TEX.



TRUE NORTH
MAGNETIC NORTH
APPROXIMATE MEAN DECLINATION, 1925

BOARD OF SURVEYS & MAPS
RECEIVED
SEP 28 1926
OFFICE OF THE SECRETARY



RETURN TO:
USGS AND HISTORICAL MAP ARCHIVES