

U.S.G.S.  
**FILE COPY**  
Inspection and Editing

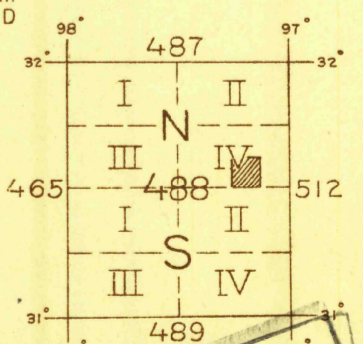
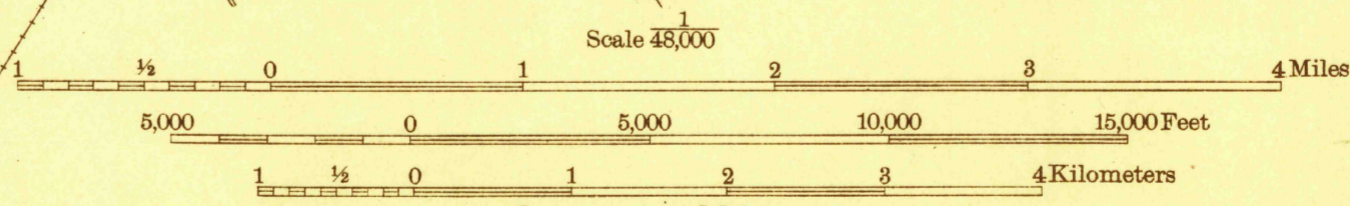
DEPARTMENT OF THE INTERIOR  
U. S. GEOLOGICAL SURVEY

488-N-IV-E/2-SW/4  
STATE OF TEXAS  
BOARD OF WATER ENGINEERS  
JOHN A. NORRIS, CHAIRMAN  
C. S. CLARK, A. H. DUNLAP

TEXAS  
(MC LENNAN COUNTY)  
WACO 4-c QUADRANGLE



TRUE NORTH  
MAGNETIC NORTH  
APPROXIMATE MEAN DECLINATION, 1924



Topography by Robert Muldrow, W.L. Miller and G.S. Druhot  
Control in part by U. S. Coast and Geodetic Survey  
Surveyed in 1923-1924

WACO 4-c, TEX.

U.S.G.S.  
**FILE COPY**  
Inspection and Editing