

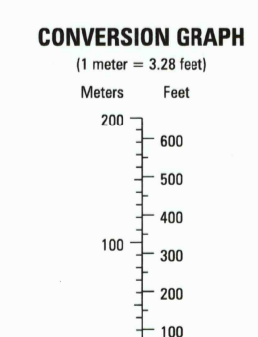
Prepared and published by the National Geospatial-Intelligence Agency
MAP INFORMATION AS OF 2003

LEGEND

POPULATED PLACES	OBSTRUCTIONS (46m or higher)	ROADS	RAILROADS	BOUNDARIES	MISCELLANEOUS CULTURAL FEATURES
Densely built-up areas	Elevation of obstruction top above sea level	All weather, hard surface	National, Secondary	International	Building, Ruin, School
Sparsely to moderately built-up areas	Elevation of obstruction top above ground level	Divided highway	Single Track	First-order	Church
One lane wide	High tension powerlines	Two or more lanes wide	Multiple Track	Second-order	Cemetery
	Catenary powerlines	One lane wide			Hospital, Helipad
	DRAINAGE	Fair or dry weather, loose surface			Cistern, Tank, Located object
	Stream	Loose surface			Well, Landmark area
	Ditch	Track, Trail			Airfield/Runway, Dam
	Spring	Route markers: Interstate			Mine: Active, Abandoned
	Well	National, Secondary			Bridge, Pedestrian bridge
	Swamp; Land subject to natural inundation	Single Track			
	Stream: Disappearing, Dissipating	Multiple Track			
	MISCELLANEOUS RELIEF				
	Spot elevation: Highest, Normal				
	Depression				
	Contour interval				
	Eschment				
	Level				
	Supplementary contour				
	Sand, Gravel				
	Disturbed surface				
	VEGETATION				
	Woodland				
	Scrub, Orchard				
	Scattered trees				
	Area name				

NOTES

A LANE ON THIS MAP IS CONSIDERED TO BE AT LEAST 2.5 METERS (8 FEET) WIDE.
ROAD CLASSIFICATION SHOULD BE REFERRED TO WITH CAUTION.
IN DEVELOPED AREAS ONLY THROUGH ROADS ARE CLASSIFIED.
CAUTION: NOT ALL TELEPHONE AND ELECTRIC SERVICE LINES ARE SHOWN.
NORTH AMERICAN DATUM 1983 (NAD 83) AND WORLD GEODETIC SYSTEM 1984 (WGS 84) ARE EQUIVALENT FOR MAPPING, CHARTING AND NAVIGATION AT THIS SCALE.



ELEVATIONS IN METERS

CONTOUR INTERVAL 10 METERS
SUPPLEMENTARY CONTOURS 5 METERS

ELLIPSOID: WORLD GEODETIC SYSTEM 1984
GRID: 1,000-METER UTM ZONE 14 (BLACK NUMBERED LINES)
PROJECTION: 5,000-METER STATE GRID TICS, TEXAS (SOUTH CENTRAL ZONE)
VERTICAL DATUM: UNIVERSAL TRANSVERSE MERCATOR
HORIZONTAL DATUM: NORTH AMERICAN VERTICAL DATUM OF 1929
PRINTED BY: NORTH AMERICAN DATUM 1983/WORLD GEODETIC SYSTEM 1984 NGA 11-04

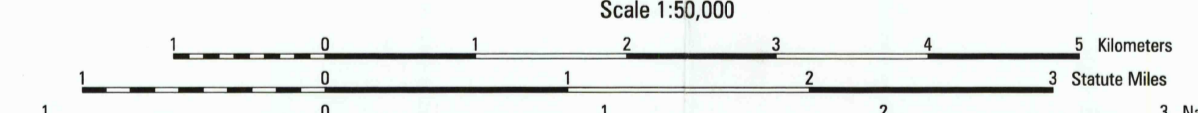
100 METER REFERENCE

- Read large numbers labeling the VERTICAL grid line left of point and estimate tenths (100 meters) from grid line to point. Example: 12.2
- Read large numbers labeling the HORIZONTAL grid line below point and estimate tenths (100 meters) from grid line to point. Example: 45.6

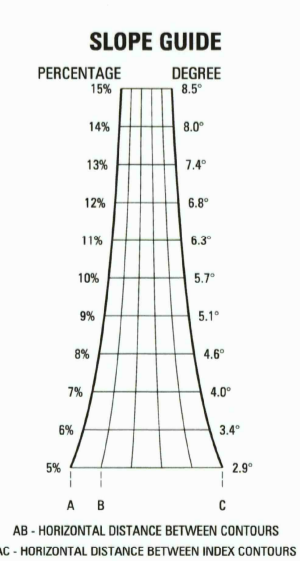
Example: 123456

WHEN REPORTING ACROSS A 100,000 METER LINE, PREFIX THE 100,000 METER SQUARE IDENTIFICATION IN WHICH THE POINT LIES.
Example: 148MS 123456

WHEN REPORTING OUTSIDE THE GRID ZONE DESIGNATION AREA, PREFIX THE GRID ZONE DESIGNATION.
Example: 148MS 123456



AUG 19 2005



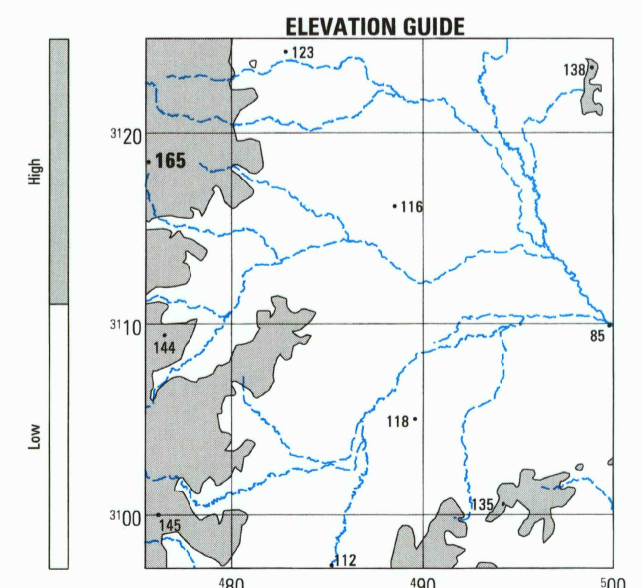
BOUNDARIES

TEXAS
La Salle County
Webb County

ADJOINING SHEETS

6140 IV	6140 I	6240 IV
6140 III	6140 II	6240 III
6139 IV	6139 I	6239 IV

Sheet 6140 I falls within NAD 14-11 1501; 1:250,000



USGS Library
Reston, VA.
Topo Archive