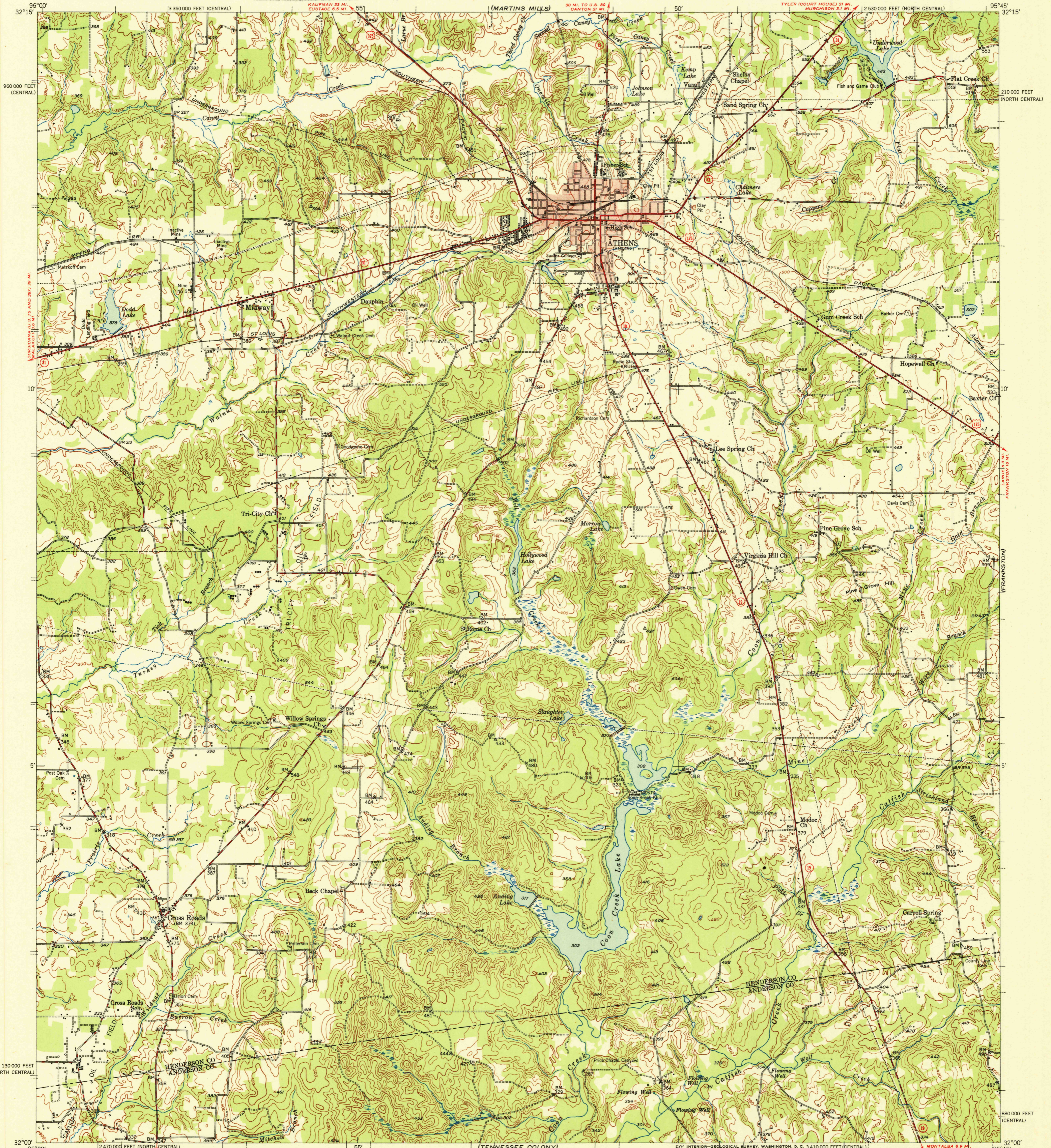


(BROWNSBORO)



Mapped, edited, and published by the Geological Survey

Control by USGS and USC&GS

Culture and drainage in part compiled from  
aerial photographs taken 1946

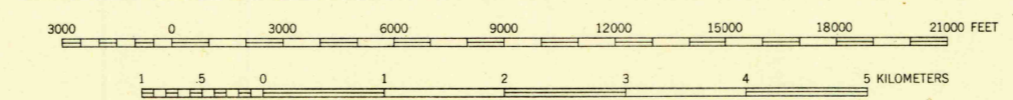
Topography by plane-table methods 1948-1949

Projection: 1927 North American datum  
10,000-foot grids based on Texas coordinate system,  
north central and central zones

Red tint indicates area in which only  
landmark buildings are shown

TRUE NORTH  
MAGNETIC NORTH  
APPROXIMATE MEAN  
DECLINATION, 1949

SCALE 1:62,500



CONTOUR INTERVAL 20 FEET  
DATUM IS MEAN SEA LEVEL

ROAD CLASSIFICATION

HARD-SURFACE ALL WEATHER ROADS	DRY WEATHER ROADS
Heavy-duty <b>2 LANE LANE</b>	Improved dirt
Medium-duty <b>2 LANE LANE</b>	Unimproved dirt
Loose-surface, graded, or narrow hard-surface	
U.S. Route	State Route

THIS MAP COMPLIES WITH NATIONAL MAP ACCURACY STANDARDS  
FOR SALE BY U.S. GEOLOGICAL SURVEY, FEDERAL CENTER, DENVER, COLORADO OR WASHINGTON 25, D. C.  
A FOLDER DESCRIBING TOPOGRAPHIC MAPS AND SYMBOLS IS AVAILABLE ON REQUEST

U.S.G.S.  
FILE COPY  
Inspection and Editing.

ATHENS, TEX.  
N3200-W9545/15  
EDITION OF 1950

NOV 2 1950

2085