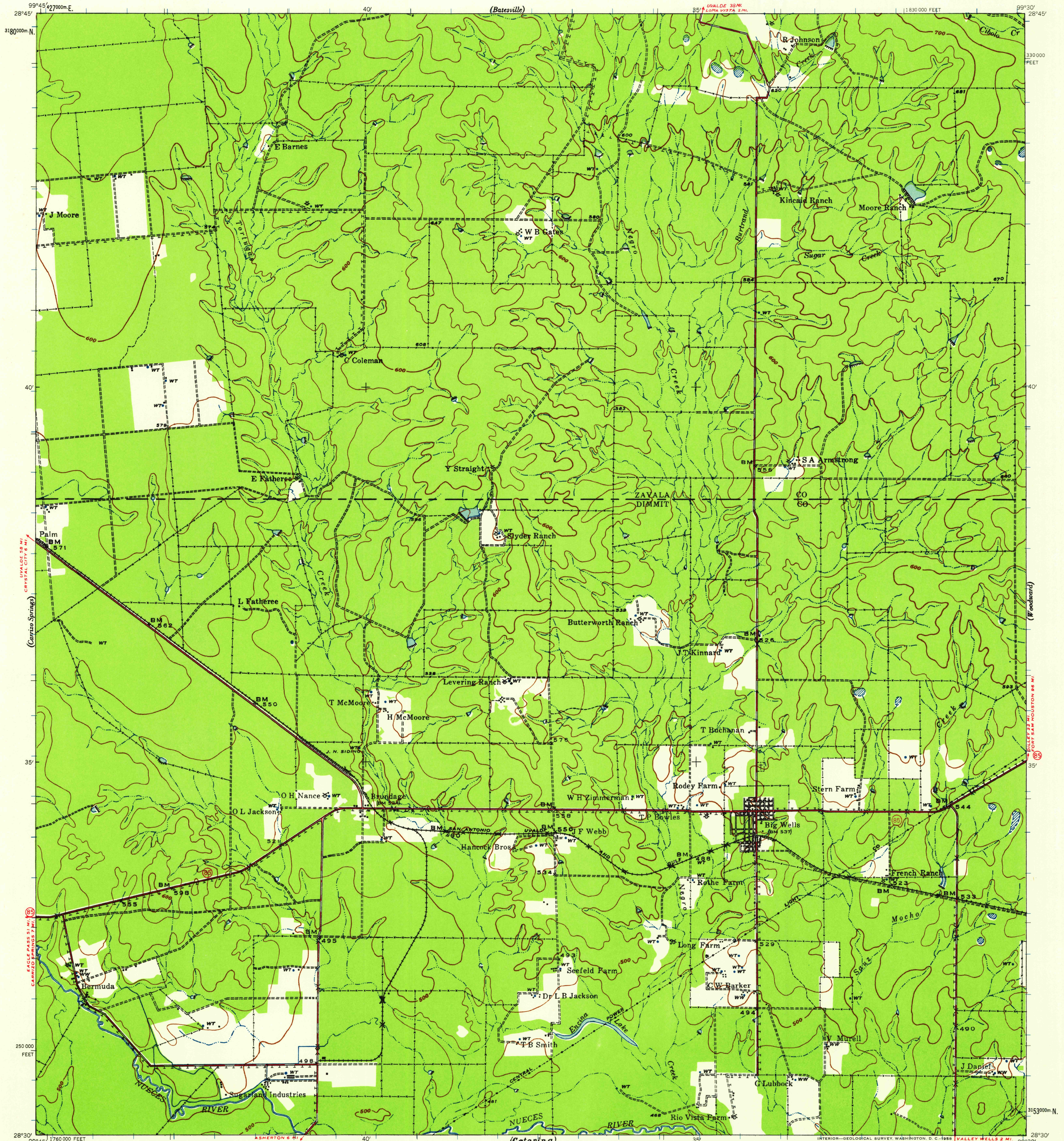
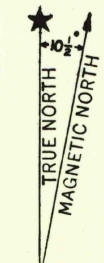
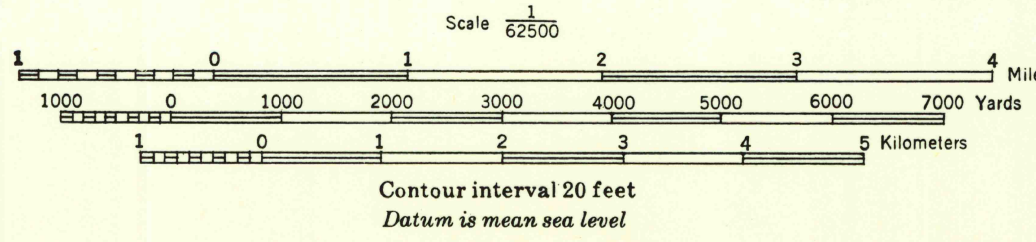


(La Pryor)

(Dixon)



Prepared under the direction of
 Engineer, Eighth Corps Area.
 Control by U. S. C. & G. S., U. S. G. S.
 Field work by Eighth Engineers, 1939.
 Aerial photography by Air Corps U. S. Army, 1939.
 Contours determined by transit vertical angles and
 stereoscopic examination of aerial photographs.
 A. Rehberg, Jr., Chief Draftsman.
 Drawn by M. A. Hays, Topographic Draftsman, 1940.
 Polyconic projection, 1927 North American Datum.



ROUTES USUALLY TRAVELED
 HARD IMPERVIOUS SURFACES
 OTHER SURFACE IMPROVEMENTS
 1940
 STATE ROUTE

10,000-FOOT GRID BASED ON TEXAS COORDINATE SYSTEM, SOUTH CENTRAL ZONE, SHOWN IN BLACK
 1,000-METER UNIVERSAL TRANSVERSE MERCATOR GRID TICKS, ZONE 14, SHOWN IN BLUE

REPRINTED FROM MILITARY EDITION FOR CIVIL USE
 FOR SALE BY U. S. GEOLOGICAL SURVEY, DENVER 2, COLORADO OR WASHINGTON 25, D. C.
 A FOLDER DESCRIBING TOPOGRAPHIC MAPS AND SYMBOLS IS AVAILABLE ON REQUEST

APPROXIMATE MEAN
 DECLINATION 1939
 ANNUAL MAGNETIC INCREASE 2 1/2'

BIG WELLS, TEX.
 N2630 = W9930/15