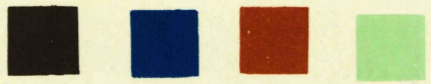
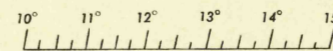


(FLAT ROCK)

TEXAS 1:62,500  
KINNEY COUNTY



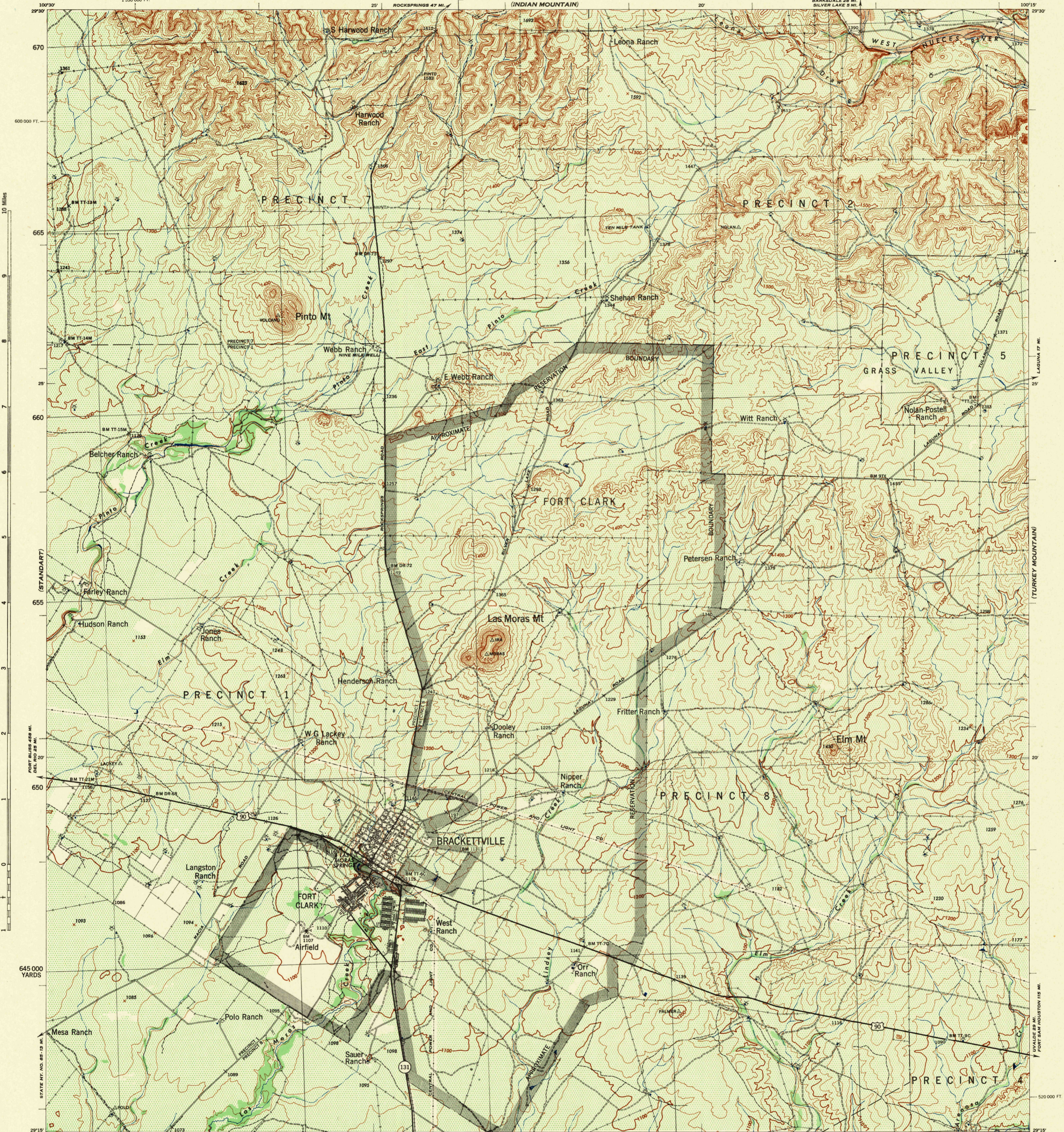
WAR DEPARTMENT  
CORPS OF ENGINEERS, U.S. ARMY  
(INDIAN MOUNTAIN)



FIRST EDITION - AMS 1

BRACKETTVILLE QUADRANGLE  
15 MINUTE SERIES

(BARKSDALE)



10 Miles

(STANDARD)

POINT BLANK 248 MI.  
DEL. RIDG 28 MI.

645 000 YARDS

TEQUILA CREEK

LAGUNA 17 MI.

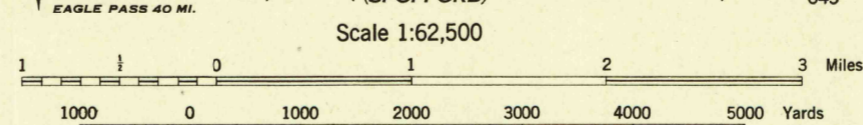
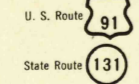
(TURKEY MOUNTAIN)

UVALDE 29 MI.  
FORT SAM HOUSTON 115 MI.

(CLINE)

First Edition (AMS-1) 1944  
Prepared under the direction of the Chief of Engineers, U.S. Army, by the  
Corps of Engineers (Little Rock District), U.S. Army, 1942.  
Control by U.S.C. & G.S., and Corps of Engineers, U.S. Army,  
Little Rock District.  
Topography by Multiple stereophotogrammetric methods, Corps of Engineers,  
U.S. Army, Little Rock District.  
Aerial photography by Corps of Engineers, U.S. Army, Little Rock District, 1942.  
Approximate Reservation Boundary (March 1944)  
Polyconic Projection, 1927 North American Datum.  
This map complies with the national standard map accuracy requirements.

ROAD CLASSIFICATION 1943  
Dependable hard surface  
Heavy-duty road  
Secondary hard surface  
All-weather road  
Trail  
Loose surface graded,  
dry weather road  
Dirt road



CONTOUR INTERVAL 20 FEET  
DATUM IS MEAN SEA LEVEL

FIVETHOUSAND YARD GRID COMPUTED FROM GRID SYSTEM FOR PROGRESSIVE MAPS  
IN THE U. S. - ZONE D U. S. G. S. SPECIAL PUBLICATION NO. 28  
THE LAST THREE DIGITS OF THE GRID NUMBERS ARE OMITTED  
TEXAS STATE GRID ZONE SOUTH CENTRAL IS INDICATED BY  
DOTTED TICKS OUTSIDE THE HEAT LINE AT 10,000 FT. INTERVALS  
NOTE: OFFICERS USING THIS MAP WILL MAKE NECESSARY CORRECTIONS AND ADJUSTMENTS WHICH COME  
WITH THEIR TRAINING AND WILL REFER TO THE CHIEF OF ENGINEERS, WASHINGTON, D. C.

Use diagram only to obtain numerical values.  
To determine magnetic north line, connect the  
pivot point "P" on the south edge of the map  
with the value of the angle between GRID  
NORTH and MAGNETIC NORTH, as plotted on  
the degree scale at the north edge of the map.

LEGEND  
BRUSH

BRACKETTVILLE, TEXAS  
N2915-W10015-15

4/44 SX

APPROXIMATE MEAN DECLINATION 1944  
FOR CENTER OF SHEET  
ANNUAL MAGNETIC CHANGE 1" INCREASE