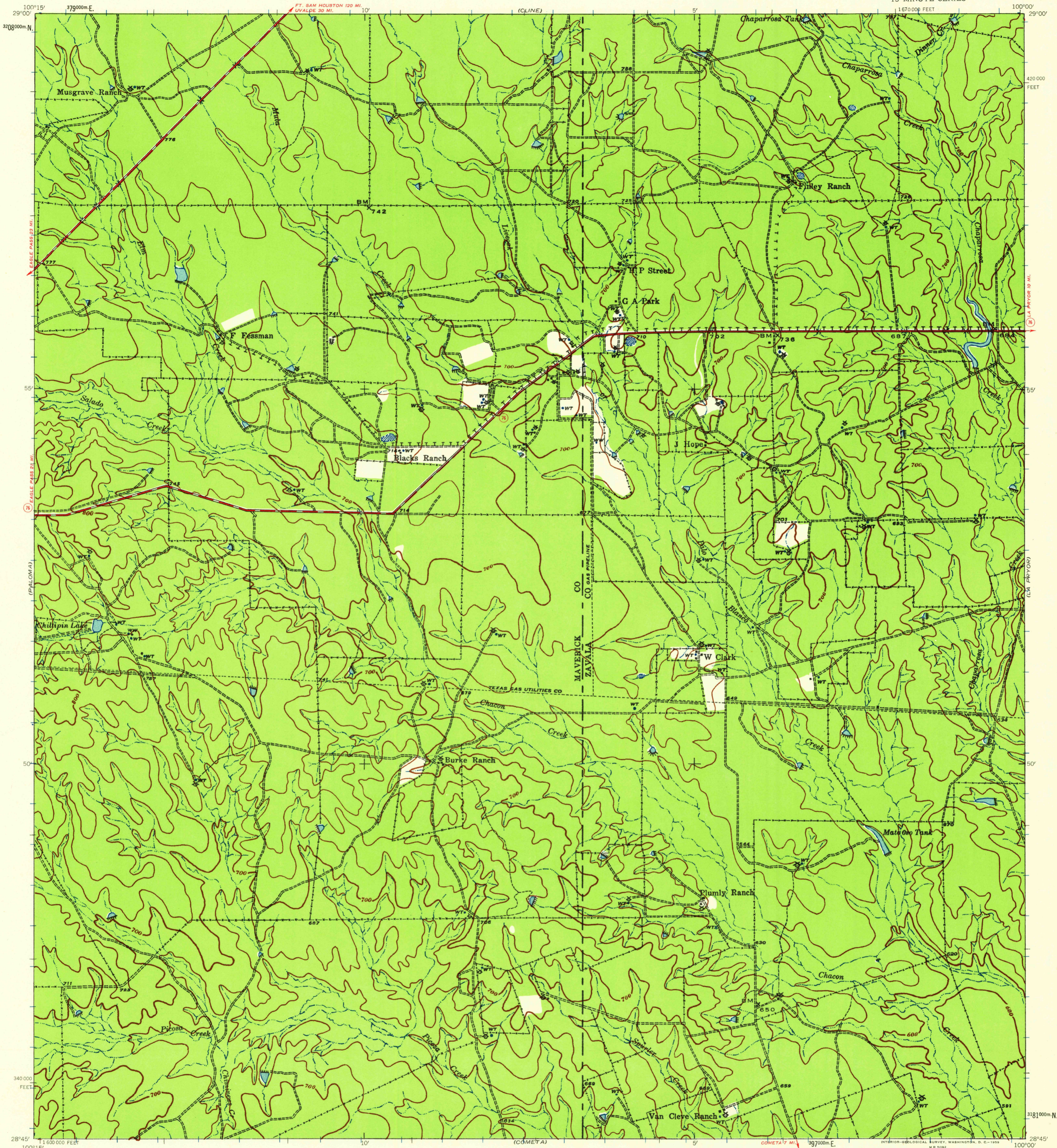


(SPOFFORD)

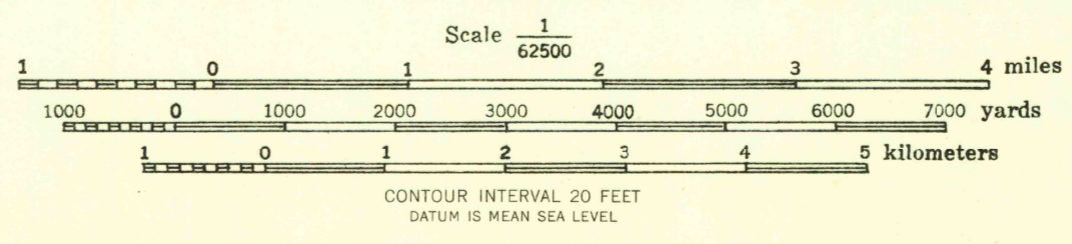
CORPS OF ENGINEERS U. S. ARMY

TEXAS
CHACON CREEK QUADRANGLE
15 MINUTE SERIES

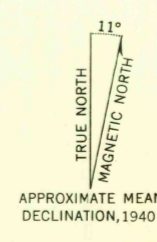
(UYALDE 1:125,000)



Prepared under the direction of Engineer, Eighth Corps Area. Field work by Eighth Engineers, 1940. Aerial photography by Air Corps, U.S. Army, 1939. Contours determined by transit vertical angles and stereoscopic examination of aerial photographs. A. Rehberg Jr., Chief Draftsman. Drawn by P. Kenda, Senior Draftsman, 1941. Polyconic projection, 1927 North American Datum. Horizontal control extended into this map by radial line method from U.S.C.&G.S. triangulation stations and U.S.G.S. primary traverse stations. Vertical control by U.S.C.&G.S., U.S.G.S. and transit vertical angles by Corps of Engineers.



10,000-FOOT GRID BASED ON TEXAS COORDINATE SYSTEM, SOUTH CENTRAL ZONE, SHOWN IN BLACK
 1,000-METER UNIVERSAL TRANSVERSE MERCATOR GRID TICKS, ZONE 14, SHOWN IN BLUE
 REPRINTED FROM MILITARY EDITION FOR CIVIL USE
 FOR SALE BY U. S. GEOLOGICAL SURVEY, DENVER 2, COLORADO OR WASHINGTON 25, D. C.
 A FOLDER DESCRIBING TOPOGRAPHIC MAPS AND SYMBOLS IS AVAILABLE ON REQUEST



ROUTES USUALLY TRAVELED
 HARD IMPERVIOUS SURFACES
 OTHER SURFACE IMPROVEMENTS
 U. S. ROUTE
 STATE ROUTE
 U.S.G.S.
 FILE COPY
 TOPOGRAPHIC DIVISION
 CHACON CREEK, TEX.
 N2845-W10000/15
 1940

JAN 26 1959

1905