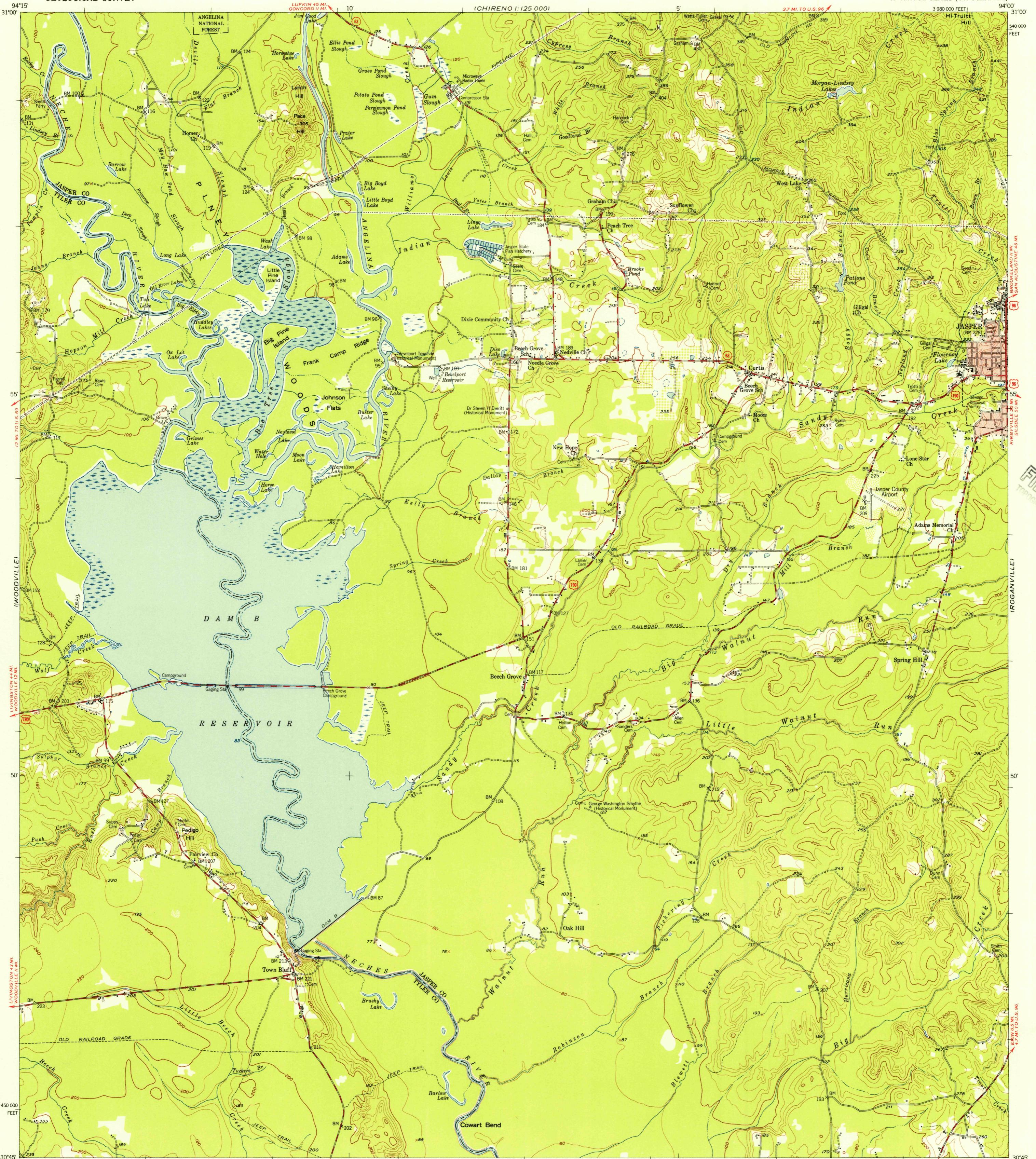
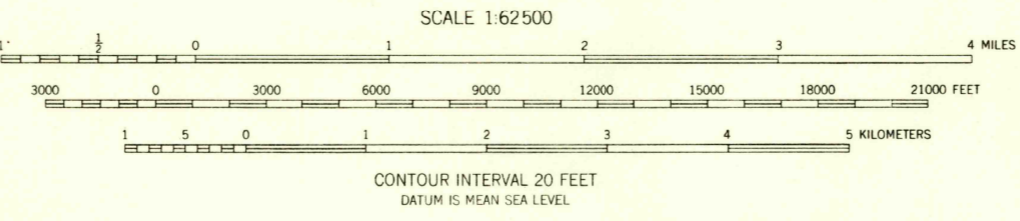


(ZAVALLA)



Mapped, edited, and published by the Geological Survey
Control by USGS, USC&GS and USCE
Topography from aerial photographs by multiplex methods
Aerial photographs taken 1952. Field check 1955
Polyconic projection. 1927 North American datum
10,000-foot grid based on Texas coordinate system,
central zone
Red tint indicates areas in which only
landmark buildings are shown

TRUE NORTH
MAGNETIC NORTH
APPROXIMATE MEAN
DECLINATION, 1955



ROAD CLASSIFICATION
Medium-duty — Light-duty
Unimproved dirt
U.S. Route State Route



U.S.G.S.
FILE COPY
TOPOGRAPHIC

CURTIS, TEX.
N3045—W9400/15
1955

NOV 26 1956
2115