

(MOUTH OF PECOS)

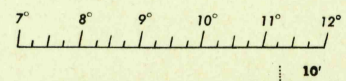
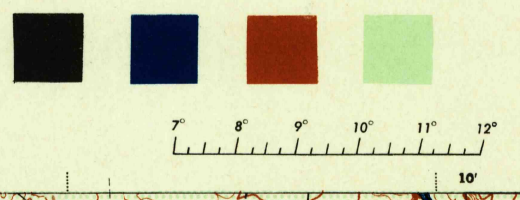
TEXAS 1:62,500
VAL VERDE COUNTY

WAR DEPARTMENT
CORPS OF ENGINEERS, U. S. ARMY
(FEELY)

FIRST EDITION - AMS 1

DEVILS RIVER QUADRANGLE
15 MINUTE SERIES

(DEVILS LAKE)



COMSTOCK 17 MI

U. S. N.Y. NO. 2777 W. DE. NO. 12 W.



10 Miles
670
665
660
655
650
645 000 YARDS
645 000 YARDS

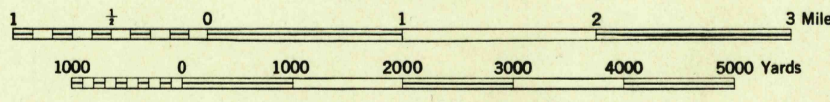
(DEL RIO)

(SYCAMORE RANCH)

First Edition (AMS 1), 1944
Prepared under the direction of the Chief of Engineers, U. S. Army, by the
Corps of Engineers (Little Rock District), U. S. Army, 1943.
Control by U. S. C. & G. S. and Corps of Engineers, U. S. Army, Little Rock District.
Topography by Multiplex stereophotogrammetric method, Corps of Engineers,
U. S. Army, Little Rock District.
Aerial photography by Corps of Engineers, U. S. Army, Little Rock District, 1942.
Polyconic Projection, 1927 North American Datum.
This map complies with the national standard map accuracy requirements, except that
all areas in Mexico were mapped from control extended by aerial triangulation, without
ground control or field edit.

ROAD CLASSIFICATION 1943
Dependable, hard-surface, heavy-duty road. Loos-surface grade. U. S. Route 790
Secondary, hard-surface, all-weather road. Dry-weather road. State Route 131
Dirt road. Trail.

Scale 1:62,500



CONTOUR INTERVAL 20 FEET—DATUM IS MEAN SEA LEVEL

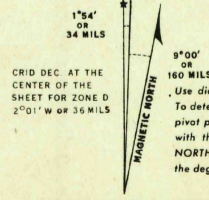
FIVE THOUSAND YARD GRID COMPUTED FROM GRID SYSTEM FOR PROGRESSIVE MAPS
IN THE U. S. ZONE "E". U. S. C. & G. S. SPECIAL PUBLICATION NO. 59

THE LAST THREE DIGITS OF THE GRID NUMBERS ARE OMITTED

THE OVERLAPPING GRID ZONE D. IS INDICATED BY SHORT BROWN TICKS CROSSING THE NEAT LINE

TEXAS STATE GRID ZONE SOUTH CENTRAL IS INDICATED BY DOTTED TICKS
OUTSIDE THE NEAT LINE AT 10,000 FT. INTERVALS

NOTE: OFFICERS USING THIS MAP WILL WANT PERSON CORRECTIONS AND ADDITIONS WHICH COME
TO THEIR ATTENTION AND MAIL DIRECT TO THE CHIEF OF ENGINEERS, WASHINGTON, D. C.



USGS
Historical File
Topographic Division

4 44 S X

LEGEND
BRUSH

DEVILS RIVER, TEXAS
N2915-W10100/15

U.S.G.S.
FILE COPY