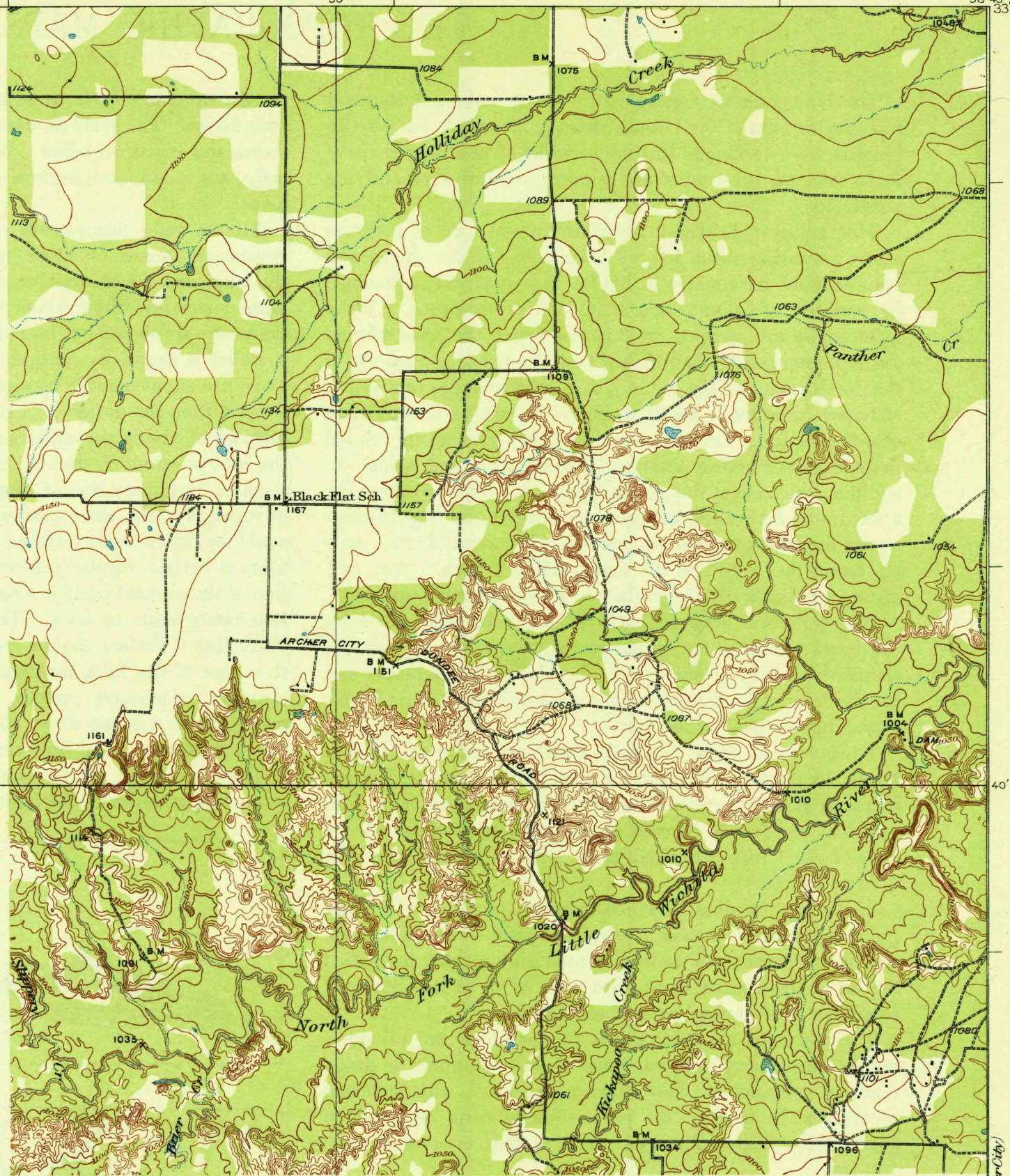


U. S. G. S.  
FILE COPY  
Inspection and Editing.

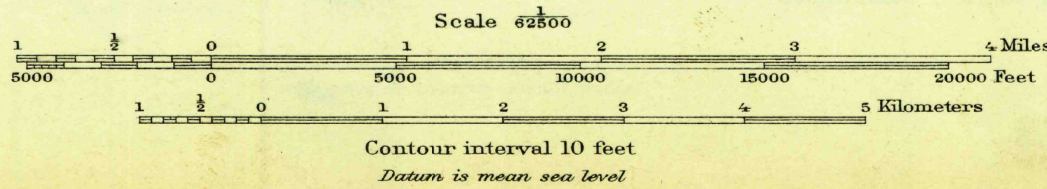


PRELIMINARY EDITION  
UNSURVEYED AREA

U. S. G. S.  
FILE COPY  
Inspection and Editing.

Topography by J.A. Shumate and S.S. Evans  
Control by U.S. Geological Survey  
Surveyed in 1929

10°  
TRUE NORTH  
MAGNETIC NORTH



Polyconic projection, North American datum  
5000 yard grid based upon U.S. zone system, D

USCS  
Historical File  
Topographic Division

FEB 29 1932 (1985)

DUNDEE, TEX.  
Edition of 1932.

15 Miles  
14  
13  
12  
11  
10  
9  
8  
7  
6  
5  
4  
3  
2  
1  
0  
1  
2  
3  
4  
5  
6  
7  
8  
9  
10  
11  
12  
13  
14  
15 Miles

1155 000  
YARDS

33°30' 99°00' 800 000 YARDS

33°30' 98°45'

1985