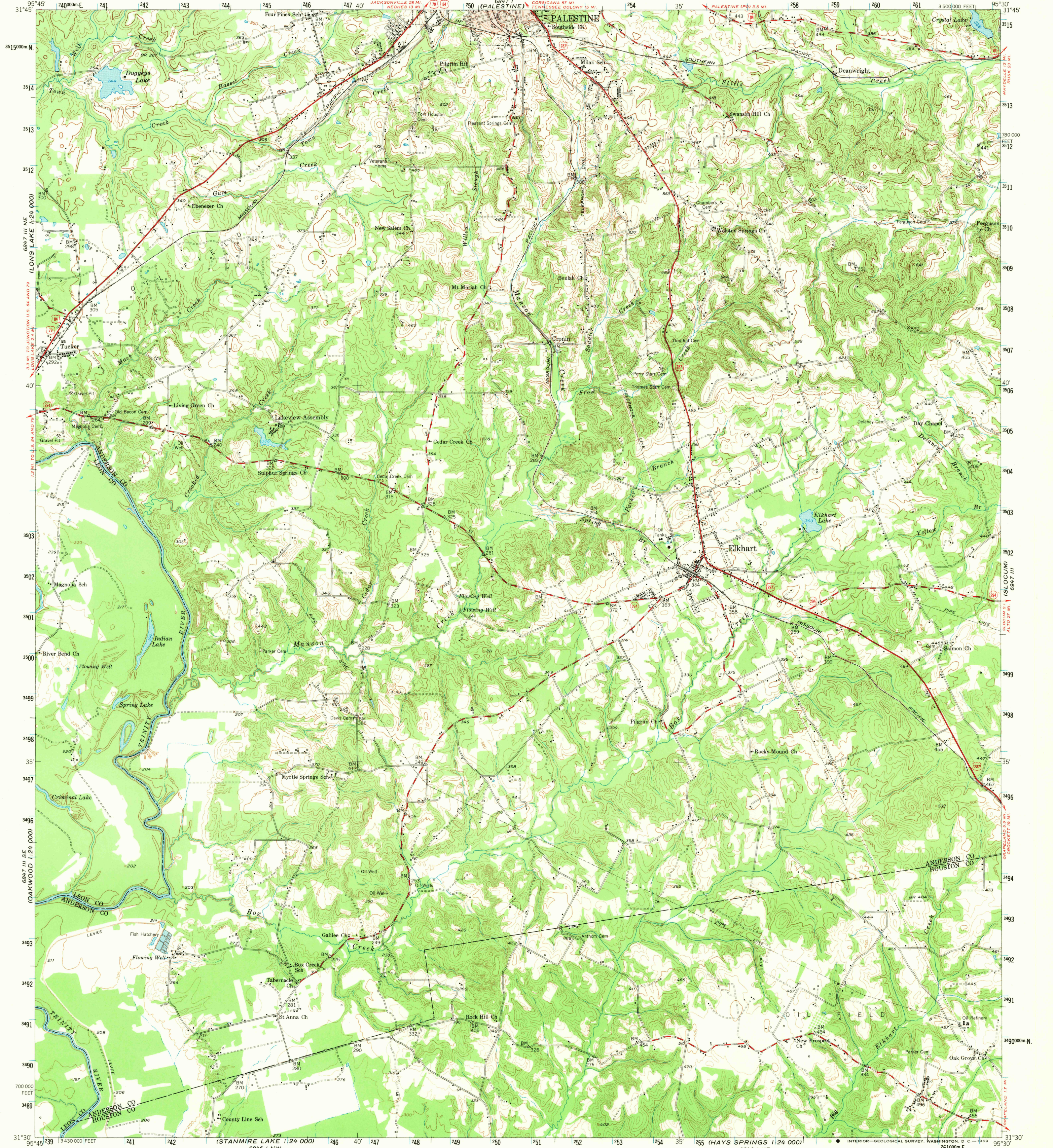


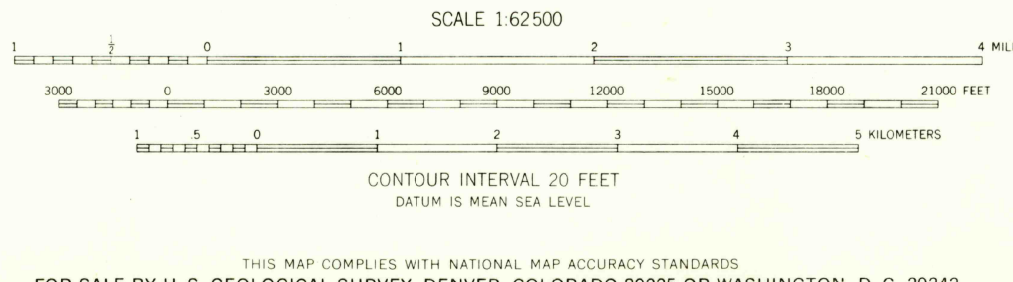
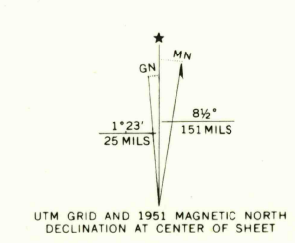
UNITED STATES
DEPARTMENT OF THE INTERIOR
GEOLOGICAL SURVEY

ELKHART QUADRANGLE
TEXAS

15 MINUTE SERIES (TOPOGRAPHIC)



Mapped, edited, and published by the Geological Survey
Control by USGS and USC&GS
Topography from aerial photographs by multiplex methods
Aerial photographs taken 1946-1947. Field check 1951
Polyconic projection. 1927 North American datum
10,000-foot grid based on Texas coordinate system,
central zone
Red tint indicates area in which only
landmark buildings are shown
1000-meter Universal Transverse Mercator grid ticks,
zone 15, shown in blue



U.S.G.S.
FILE COPY
TOPOGRAPHIC DIVISION

ELKHART, TEX.
N3130-W9530/15
1951
AMS 6847 II-SERIES V782

THIS MAP COMPLIES WITH NATIONAL MAP ACCURACY STANDARDS
FOR SALE BY U. S. GEOLOGICAL SURVEY, DENVER, COLORADO 80225 OR WASHINGTON, D. C. 20242
A FOLDER DESCRIBING TOPOGRAPHIC MAPS AND SYMBOLS IS AVAILABLE ON REQUEST