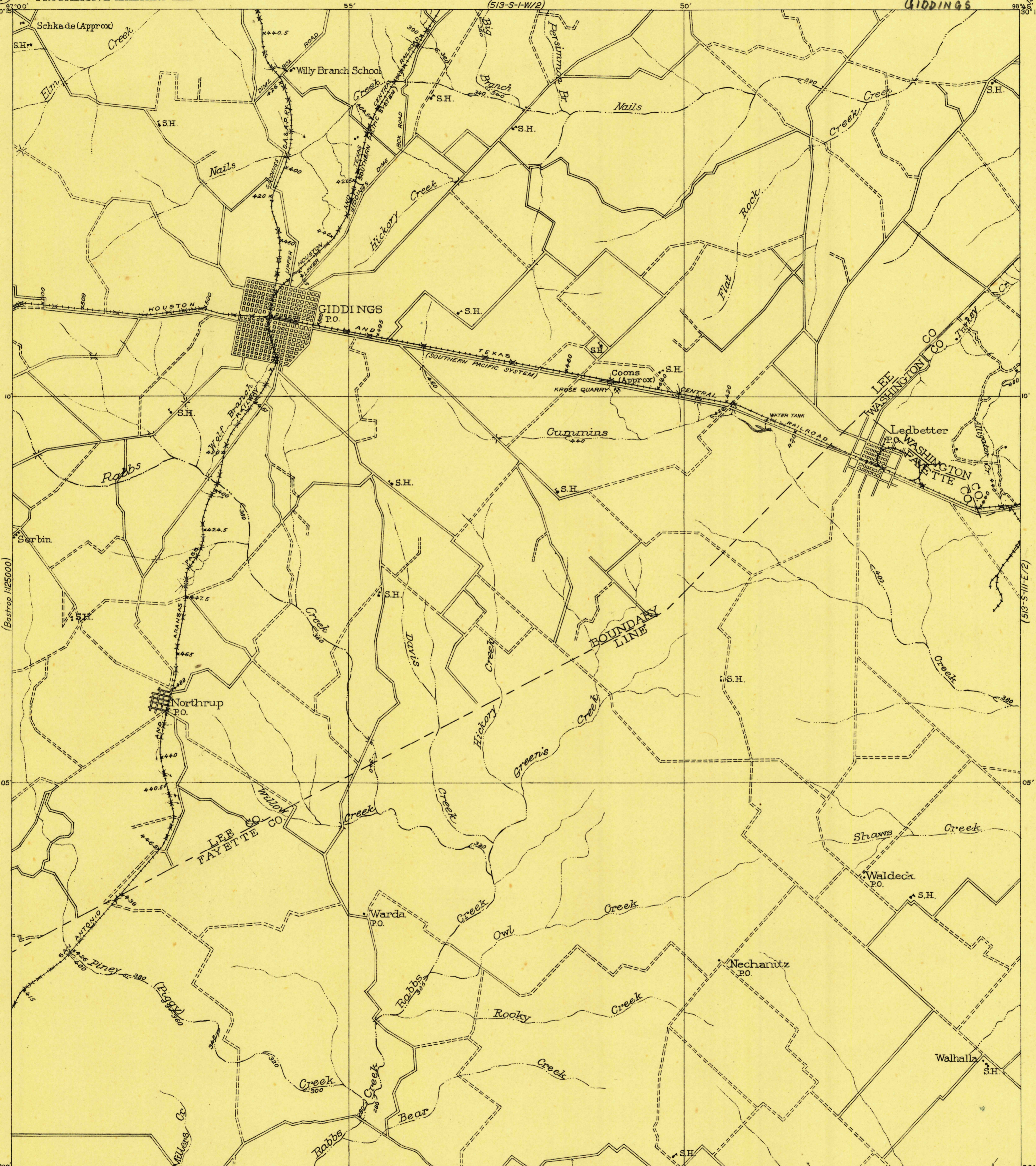


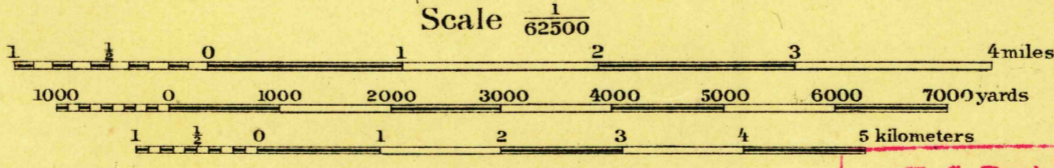
ADVANCE SHEET
513-S-III-W/2

CORPS OF ENGINEERS, U. S. ARMY
PROGRESSIVE MILITARY MAP

TEXAS
GIDDINGS



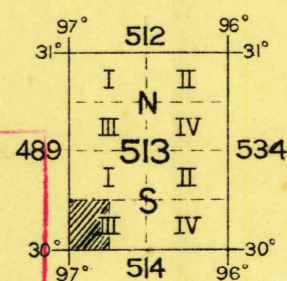
Prepared under the direction of Col. W. P. Stokely,
Corps of Engineers, U.S.A., Department Engineer,
Southern Department, 1919.
Compiled from Railroad Alignments and Profiles
and County Road Maps.
Completed under the direction of Major W. G. Caples,
Corps of Engineers, July and August, 1919.



Contour Interval 20 feet
Datum is mean sea level

NOTE: OFFICERS USING THIS MAP WILL MARK HEREON CORRECTIONS AND ADDITIONS WHICH COME
TO THEIR ATTENTION AND MAIL DIRECT TO "THE CHIEF OF ENGINEERS, WASHINGTON, D.C."

Engineer Reproduction Plant, U. S. Army, Washington Barracks, D.C.



USGS Library
Reston, VA.
Topo Archive

U. S. Dept. of Interior
Div. of Geography
Class. 630 CE 1919
Date.....

GIDDINGS, TEX.

RETURN TO:
USGS AND HISTORICAL MAP ARCHIVES