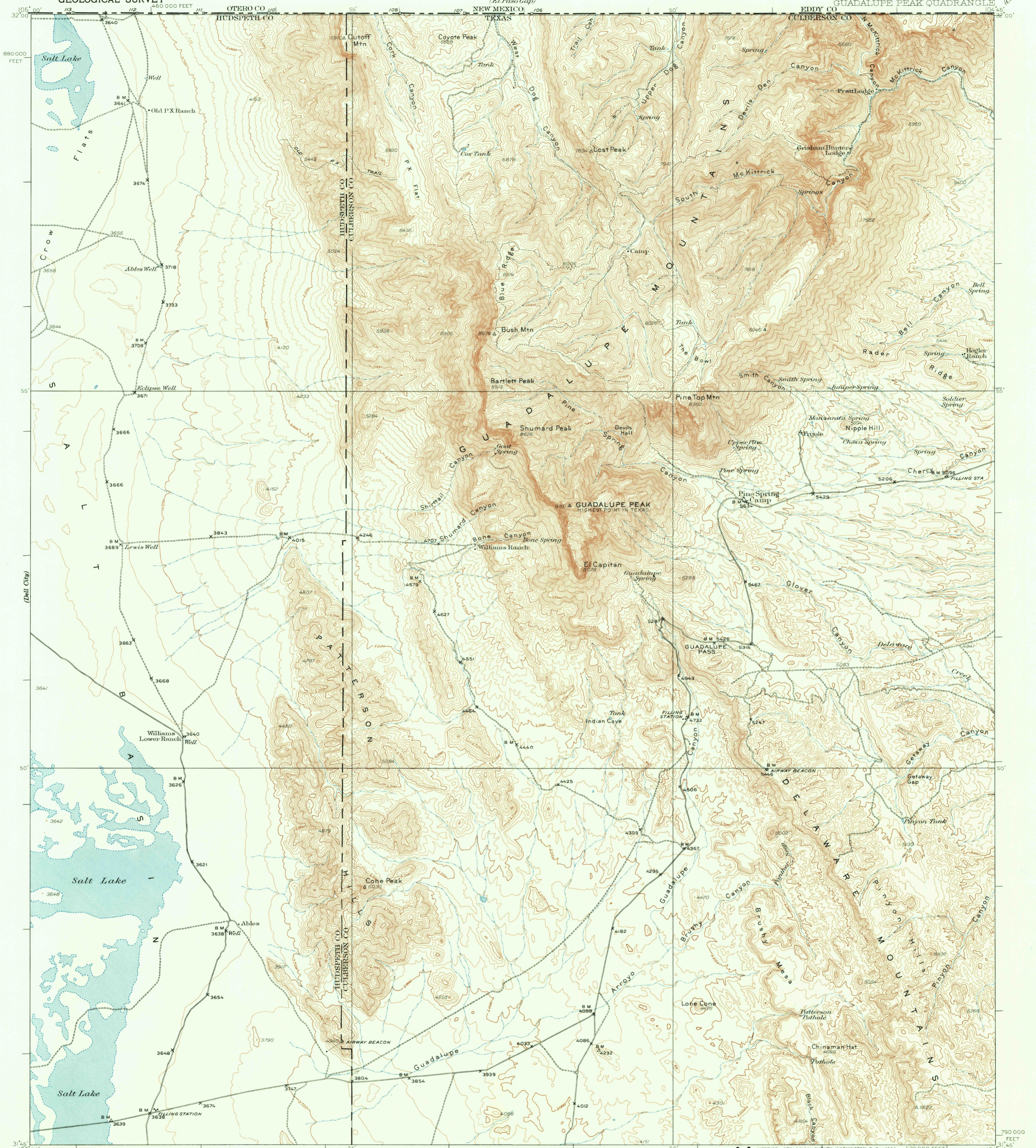


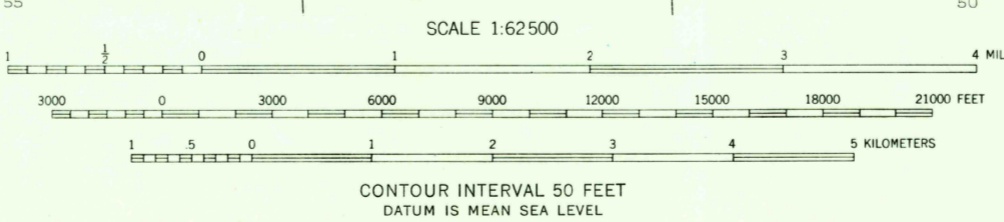
UNITED STATES
DEPARTMENT OF THE INTERIOR
GEOLOGICAL SURVEY

TEXAS
GUADALUPE PEAK QUADRANGLE



Topography by S.G. Lunde, W.A. Tingey,
R.O. Davis, and J.M. Holmes
Surveyed in 1933

TRUE NORTH
APPROXIMATE MEAN
DECLINATION, 1953



● INTERIOR—GEOLOGICAL SURVEY, WASHINGTON, D. C.—1964
Since the publication of this map, the Texas (Central) rectangular coordinate system has been changed to the 1927 North American datum 10,000-foot grid based on Texas (Central) rectangular coordinate system

GUADALUPE PEAK, TEX.
N3145—W10445/15
1933

THIS MAP AVAILABLE WITH OR WITHOUT SHADED RELIEF OVERPRINT
FOR SALE BY U. S. GEOLOGICAL SURVEY, DENVER 25, COLORADO, OR WASHINGTON 25, D. C.
A FOLDER DESCRIBING TOPOGRAPHIC MAPS AND SYMBOLS IS AVAILABLE ON REQUEST

OCT 2 8 1964

4270

USGS
THE COPY
DIVISION