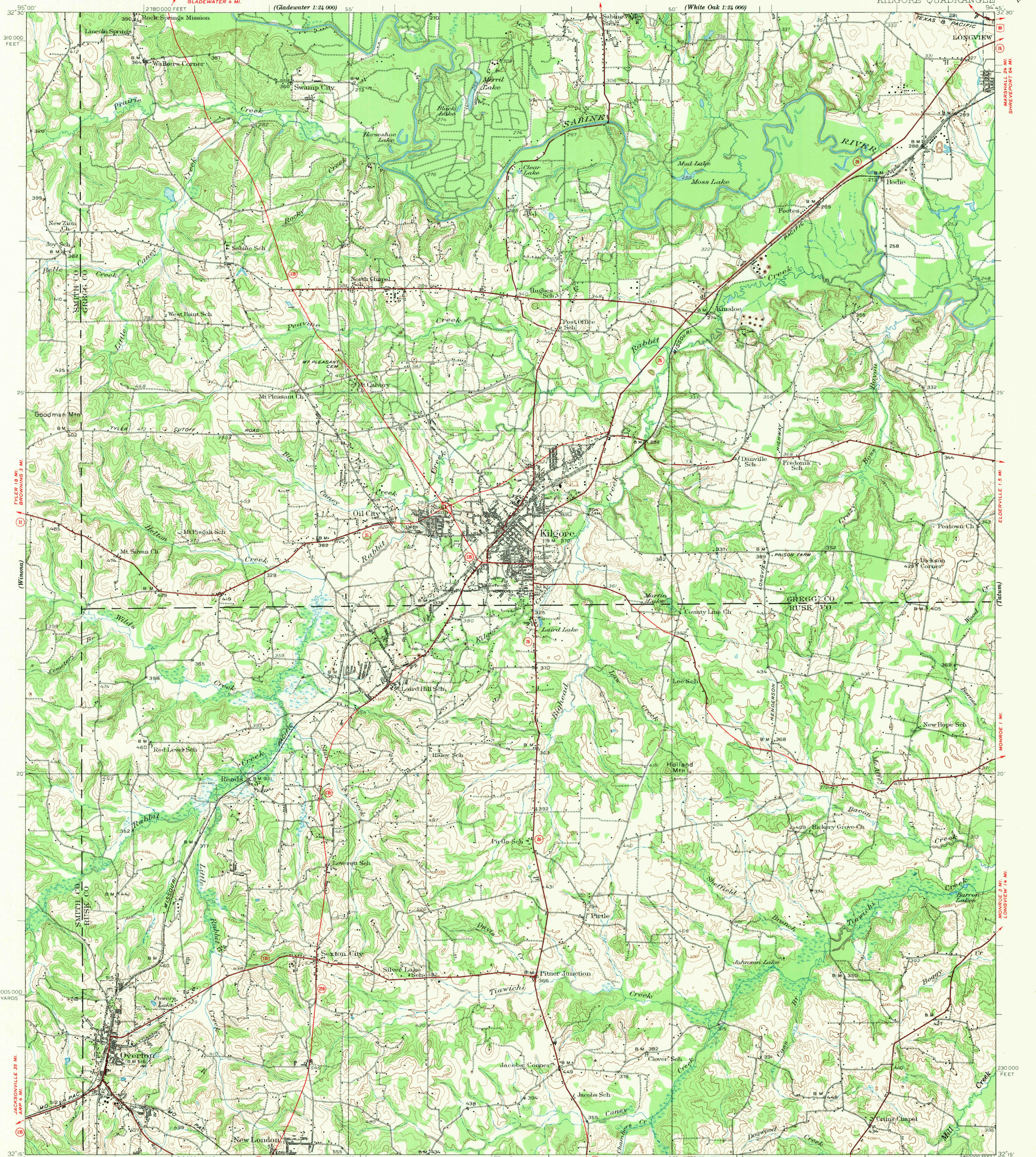


UNITED STATES  
DEPARTMENT OF THE INTERIOR  
GEOLOGICAL SURVEY



Topography by W.F. Chenault, W.S. Beames, J.T. Schultz,  
V.E. Barnes, N.J. Bingman, J.T. Gist, R.L. Mannen,  
F.E. Russell, L.R. Springer, E.R. Stiles, and J.R. Sanford.  
Surveyed in 1935-1936.

NEW LONDON 1.5 MI.  
HENDERSON 12 MI.

SELMAN CITY 4 MI.  
TO U.S. ROUTE NO. 79 14 MI.

HENDERSON 7.5 MI.  
NACOGDOCHES 42 MI.

HENDERSON 7 MI.

HENDERSON 7 MI.

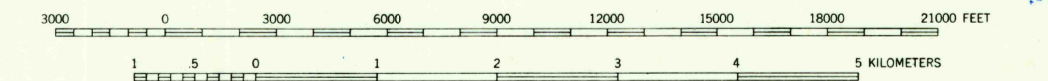
HENDERSON 7 MI.

HENDERSON 7 MI.

HENDERSON 7 MI.

HENDERSON 7 MI.

HENDERSON 7 MI.



FOR SALE BY U. S. GEOLOGICAL SURVEY, DENVER, COLORADO 80225 OR WASHINGTON, D. C. 20242  
A FOLDER DESCRIBING TOPOGRAPHIC MAPS AND SYMBOLS IS AVAILABLE ON REQUEST

USGS  
Historical File  
Topographic Division

ROUTES USUALLY TRAVELED  
HARD IMPROVED SURFACES  
OTHER SURFACE IMPROVEMENTS  
U. S. ROUTE 1940 STATE ROUTE

Polyconic projection, 1927 North American datum  
5000 yard grid based on U.S. zone system, D  
10000 foot grid based on Texas (North Central)  
rectangular coordinate system

KILGORE, TEX.  
N3215-W9445/15  
1936

U.S.G.S.  
FILE COPY  
TOPOGRAPHIC DIVISION

935  
T10  
MAR 5 1970