

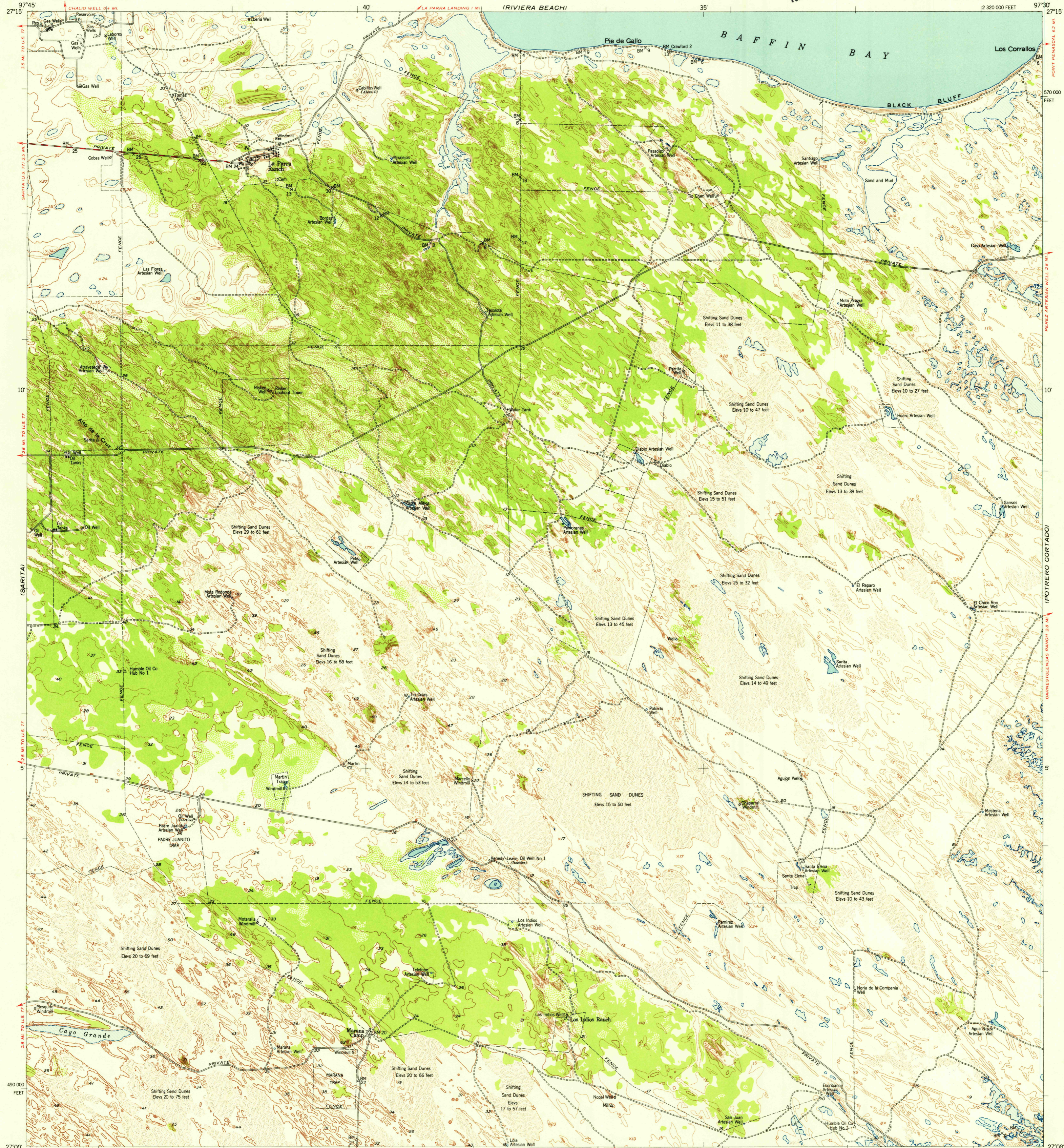
(RICARDO)

UNITED STATES
DEPARTMENT OF THE INTERIOR
GEOLOGICAL SURVEY

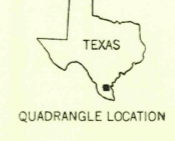
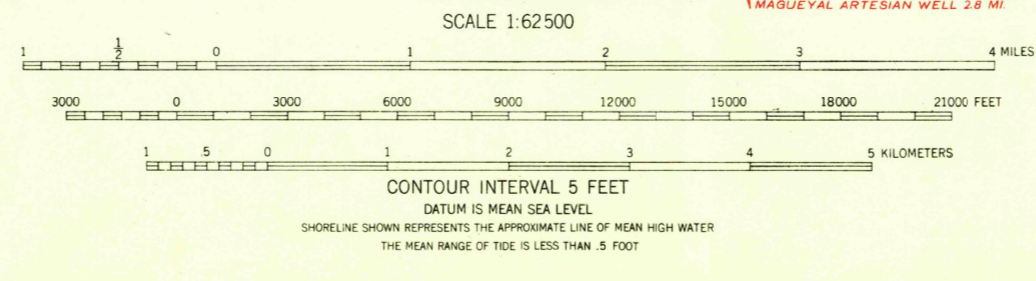
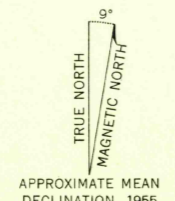
U.S.G.S.
FILE COPY
TOPOGRAPHIC DIVISION

LA PARRA RANCH QUADRANGLE
TEXAS-KENEDY CO.
15 MINUTE SERIES (TOPOGRAPHIC)

(SOUTH BIRD ISLAND)



Mapped, edited, and published by the Geological Survey
Control by USGS and USC&GS
Compiled in 1955 from 1:24000 scale maps of the Sarita 4 NE,
La Parra Ranch, and Sarita 4 SE 7.5-minute quadrangles,
surveyed 1951 and 1952 by the U.S. Coast and Geodetic Survey,
and the La Parra Ranch SW 7.5-minute quadrangle, surveyed 1954
by the Geological Survey
Polyconic projection, 1927 North American datum
10,000-foot grid based on Texas coordinate system,
south zone
Water stages in this area vary with meteorological conditions
Approximate limits of occasional inundation shown by dashed blue lines
where mean high water is undetermined for lack of visual evidence
Dotted blue lines indicate the approximate limits of low water



U.S.G.S.
FILE COPY
TOPOGRAPHIC DIVISION

ROAD CLASSIFICATION

Heavy-duty	Light-duty
Medium-duty	Unimproved dirt
U.S. Route	State Route

This area is also covered by 1:24000 scale maps of the Sarita 4 NE 1951,
La Parra Ranch 1952, Sarita 4 SE 1952, and La Parra Ranch SW 1954
7.5 minute quadrangles.

LA PARRA RANCH, TEX.
N2700-W9730/15

1955 JAN 25 1956

(POTRERO LORENDO)

(ARMSTRONG)

2095