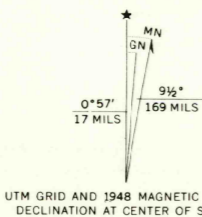


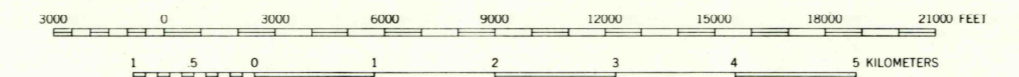
Maped by the Army Map Service  
Edited and published by the Geological Survey  
Control by US&GS and AMS

Topography from aerial photographs by multiplex methods  
Aerial photographs taken 1947. Field check 1948  
Polyconic projection. 1927 North American datum  
10,000-foot grid based on Texas coordinate system,  
central zone

No distinction is made between dwellings, barns,  
commercial and industrial buildings  
1000-meter Universal Transverse Mercator grid ticks,  
zone 14, shown in blue



SCALE 1:62,500



CONTOUR INTERVAL 10 FEET  
DATUM IS MEAN SEA LEVEL

THIS MAP COMPLIES WITH NATIONAL MAP ACCURACY STANDARDS  
FOR SALE BY U. S. GEOLOGICAL SURVEY, DENVER, COLORADO 80225, OR RESTON, VIRGINIA 22092  
A FOLDER DESCRIBING TOPOGRAPHIC MAPS AND SYMBOLS IS AVAILABLE ON REQUEST

ROAD CLASSIFICATION  
HARD-SURFACE ALL WEATHER ROADS DRY WEATHER ROADS  
Heavy-duty ———— 4 LANE 16' LANE Improved dirt  
Medium-duty ———— 4 LANE 16' LANE Unimproved dirt  
Loose-surface, graded, or narrow hard-surface - - - - -  
U. S. Route      State Route

LEXINGTON, TEX.  
N3015-W9700/15  
1948  
AMS 6544 I-SERIES V782

USGS  
HISTORICAL FILE  
TOPOGRAPHIC DIVISION

JAN 09 1974

1640