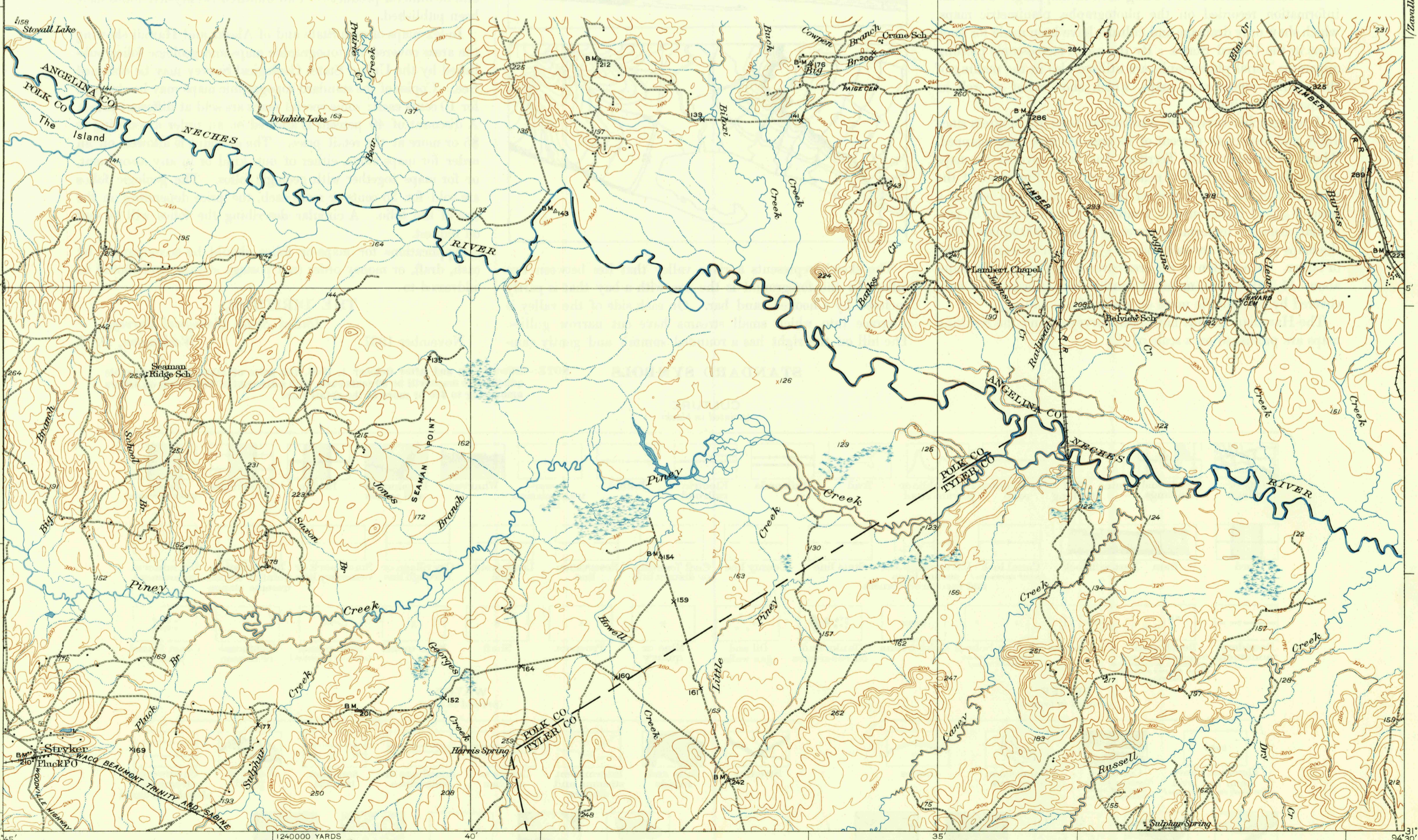


UNSURVEYED AREA

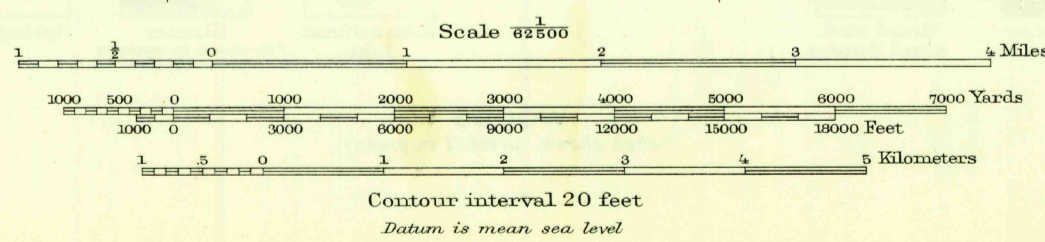
U. S. G. S.  
FILE COPY  
Inspection and Editing.

U. S. G. S.  
FILE COPY  
Inspection and Editing.



Topography by R.H. Reineck and C.W. Goodlove  
Culture and drainage in part compiled from aerial  
photographs taken by Air Corps, U.S. Army  
Control by U.S. Geological Survey  
Surveyed in 1927-1928

TRUE NORTH  
MAGNETIC NORTH  
APPROXIMATE MEAN  
DECLINATION 1928



Polyconic projection, North American datum  
5000 yard grid based upon U.S. zone system, D

U. S. G. S.  
FILE COPY  
Inspection and Editing.

MANNING, TEX.  
Edition of 1932  
reprinted 1949  
N3100-W9430/15

MAY 5 1949

2080