

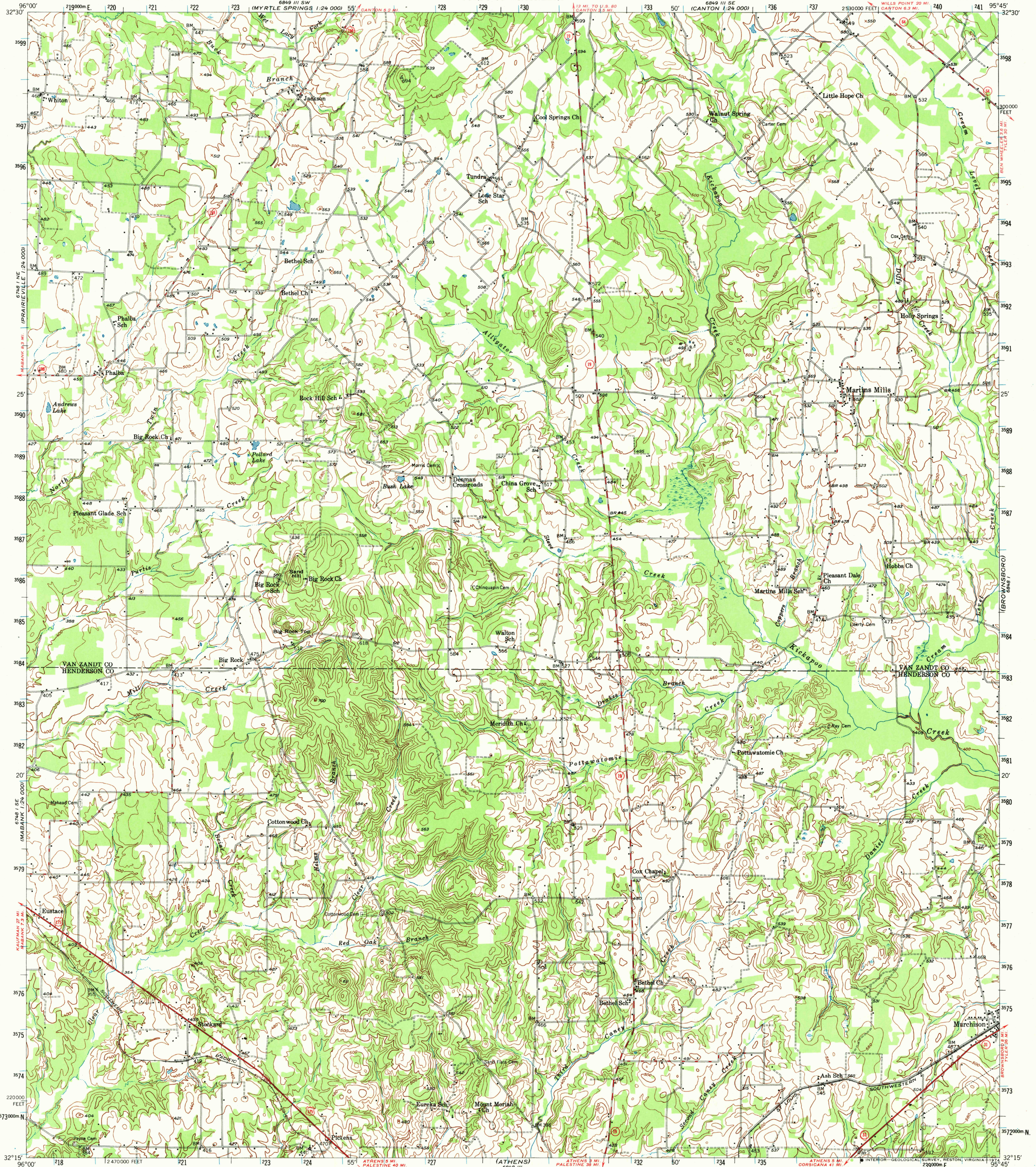
6848 I I SE  
MARTINS MILLS  
1:24,000

UNITED STATES  
DEPARTMENT OF THE INTERIOR  
GEOLOGICAL SURVEY

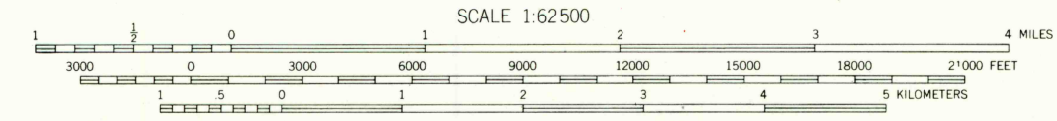
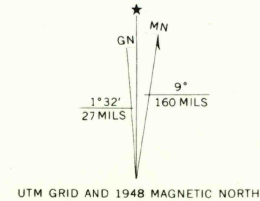
UNITED STATES  
DEPARTMENT OF THE ARMY  
CORPS OF ENGINEERS

MARTINS MILLS QUADRANGLE  
TEXAS  
15 MINUTE SERIES (TOPOGRAPHIC)

6848 I I SW  
MARTINS MILLS  
1:24,000



Mapped, edited, and published by the Geological Survey  
Control by USGS and USC&GS  
Culture and drainage in part compiled from  
aerial photographs taken 1940 and 1947  
Topography by plane-table methods 1947-1948  
Polyconic projection. 1927 North American datum  
10,000-foot grid based on Texas coordinate system,  
north central zone  
1000-meter Universal Transverse Mercator grid ticks,  
zone 15, shown in blue



CONTOUR INTERVAL 20 FEET  
DATUM IS MEAN SEA LEVEL

ROAD CLASSIFICATION

|   |                   |
|---|-------------------|
| HARD-SURFACE ALL WEATHER ROADS                | DRY WEATHER ROADS |
| Heavy-duty                                    | Improved dirt     |
| Medium-duty                                   | Unimproved dirt   |
| Loose-surface, graded, or narrow hard-surface |                   |
| U. S. Route                                   | Slate Route       |

THIS MAP COMPLIES WITH NATIONAL MAP ACCURACY STANDARDS  
FOR SALE BY U. S. GEOLOGICAL SURVEY, DENVER, COLORADO 80225, OR RESTON, VIRGINIA 22092

USGS  
Historical File  
Topographic Division

MARTINS MILLS, TEX.  
N3215-W9545/15  
1948  
AMS 6848 IV-SERIES V782

MAY 29 1974

1585