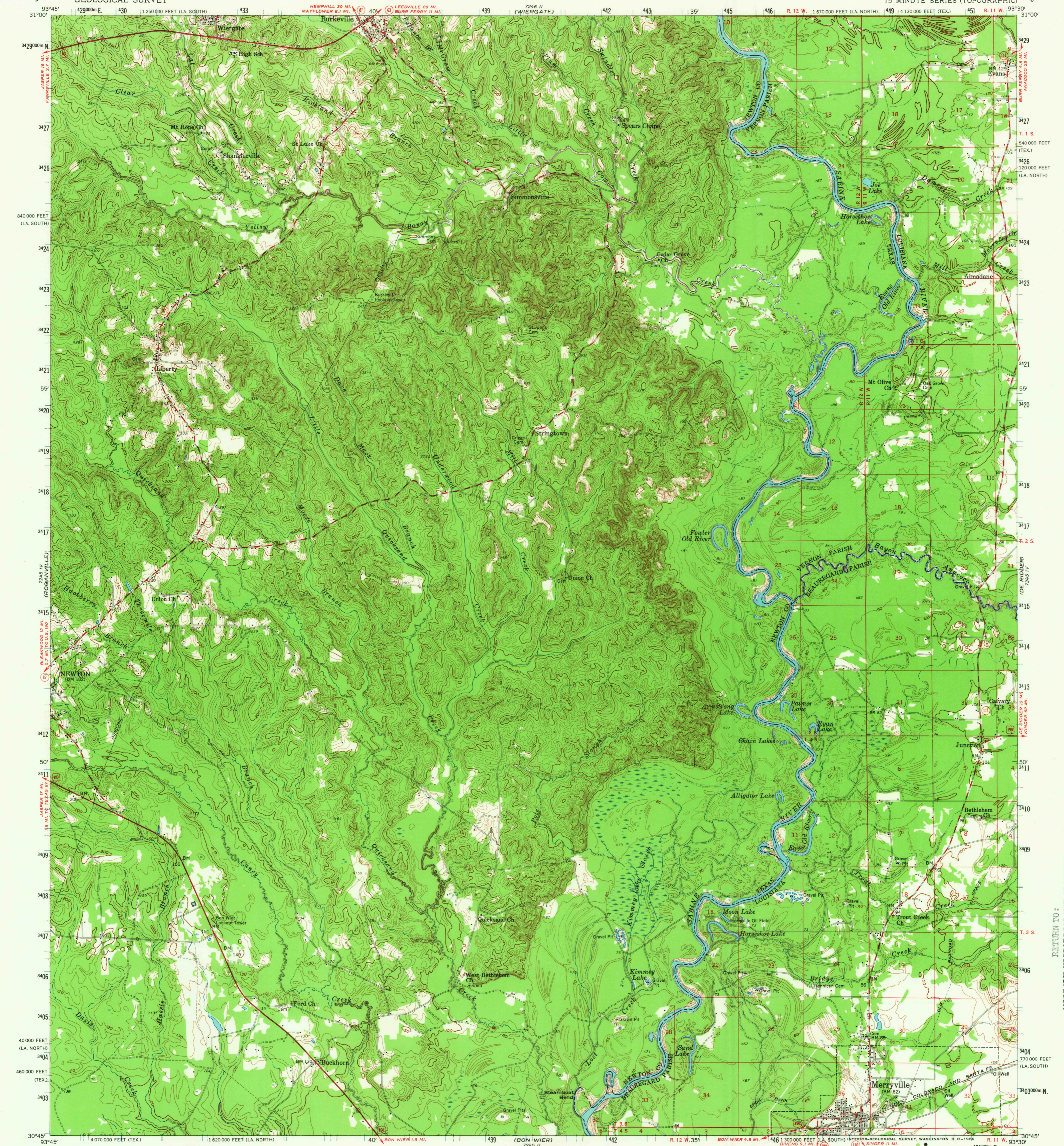
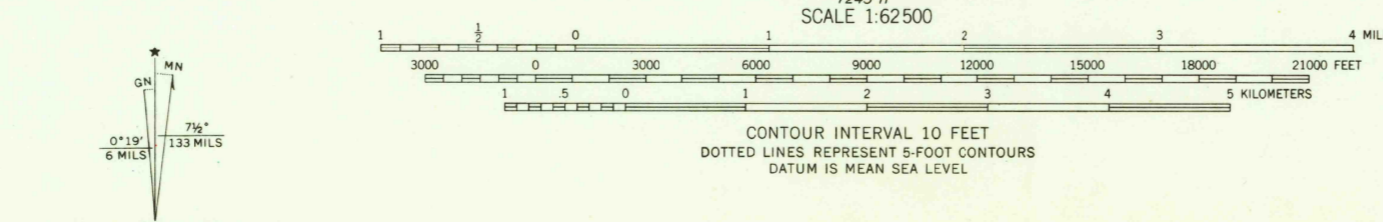


UNITED STATES
DEPARTMENT OF THE INTERIOR
GEOLOGICAL SURVEY

MERRYVILLE QUADRANGLE
TEXAS-LOUISIANA
15 MINUTE SERIES (TOPOGRAPHIC)



Mapped, edited, and published by the Geological Survey
Control by USGS, USC&GS, and Louisiana Geodetic Survey
Topography from aerial photographs by photogrammetric methods
and by planetable surveys 1959. Aerial photographs taken 1954
Polyconic projection. 1927 North American datum
10,000-foot grids based on Texas coordinate system, central zone,
and Louisiana coordinate system, south and north zones
1000-meter Universal Transverse Mercator grid ticks,
zone 15, shown in blue



THIS MAP COMPLIES WITH NATIONAL MAP ACCURACY STANDARDS
FOR SALE BY U.S. GEOLOGICAL SURVEY, DENVER, COLORADO 80225 OR WASHINGTON, D.C. 20242
AND BY THE STATE OF LOUISIANA, DEPARTMENT OF PUBLIC WORKS, BATON ROUGE, LOUISIANA
A FOLDER DESCRIBING TOPOGRAPHIC MAPS AND SYMBOLS IS AVAILABLE ON REQUEST

ROAD CLASSIFICATION
Heavy-duty ——— Light-duty ———
Medium-duty ——— Unimproved dirt - - - - -
U.S. Route (red circle) State Route (black circle)

TEXAS
QUADRANGLE LOCATION

U.S.G.S.
MERRYVILLE, TEX.-LA.
N 3045-W9330/15
1959
AMS 7245 I-SERIES V782

4175
MAR 11 1960

RETURN TO:
USGS AND HISTORICAL MAP ARCHIVES