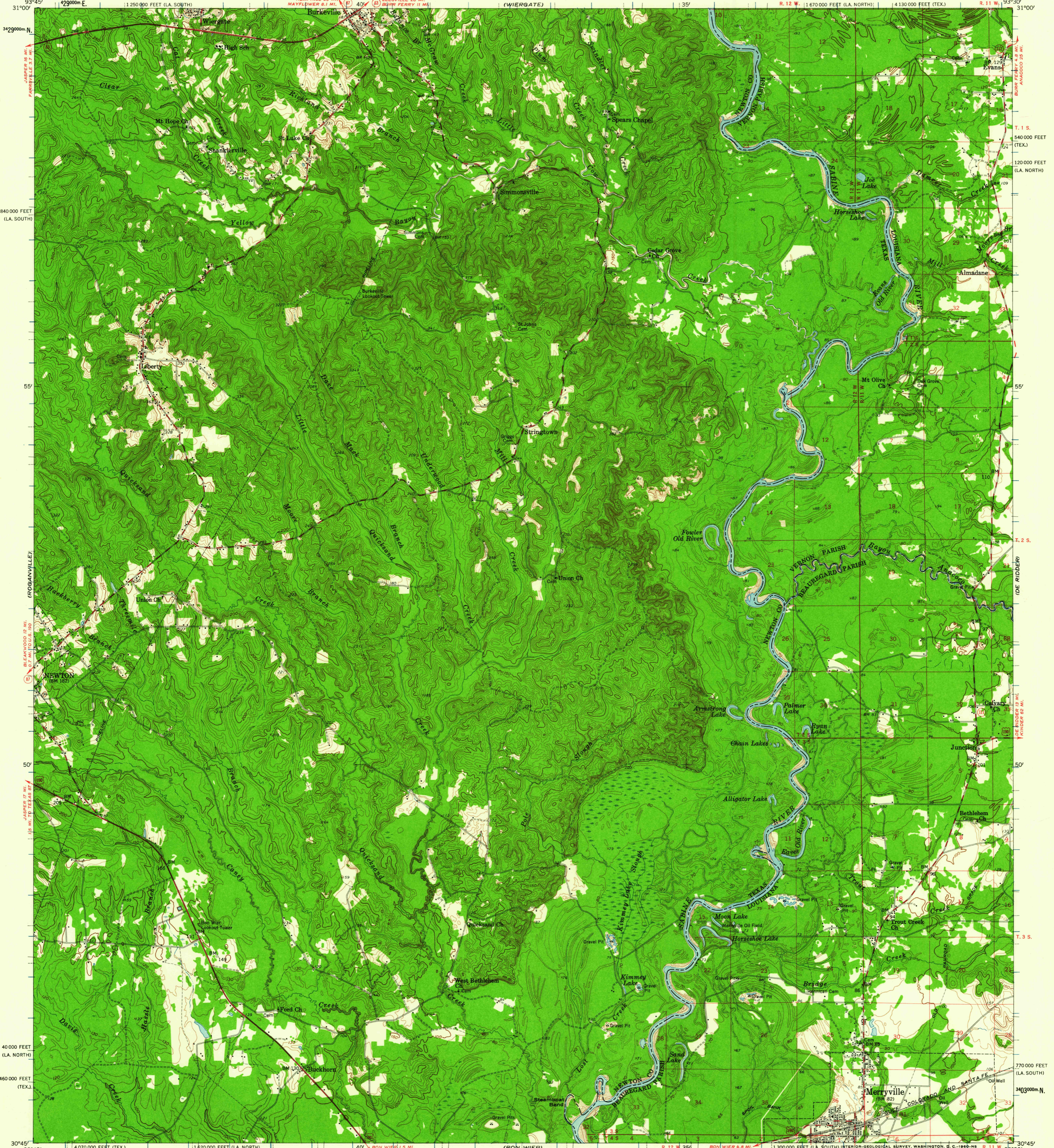


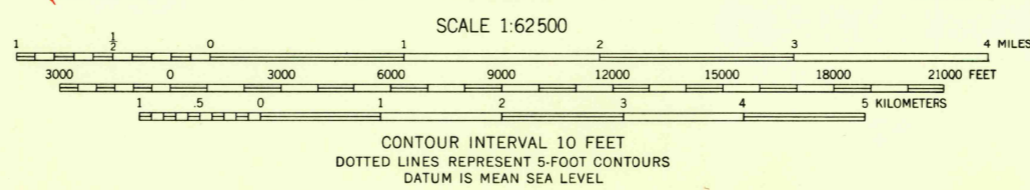
UNITED STATES  
DEPARTMENT OF THE INTERIOR  
GEOLOGICAL SURVEY

MERRYVILLE QUADRANGLE  
TEXAS-LOUISIANA  
15 MINUTE SERIES (TOPOGRAPHIC)



Mapped, edited, and published by the Geological Survey  
Control by USGS, USC&GS, and Louisiana Geodetic Survey  
Topography from aerial photographs by photogrammetric methods  
and by planetable surveys 1959. Aerial photographs taken 1954  
Polyconic projection. 1927 North American datum  
10,000-foot grids based on Texas coordinate system, central zone,  
and Louisiana coordinate system, south and north zones  
1000-meter Universal Transverse Mercator grid ticks,  
zone 15, shown in blue

TRUE NORTH  
MAGNETIC NORTH  
APPROXIMATE MEAN  
DECLINATION, 1959



THIS MAP COMPLIES WITH NATIONAL MAP ACCURACY STANDARDS  
FOR SALE BY U. S. GEOLOGICAL SURVEY, DENVER 25, COLORADO OR WASHINGTON 25, D. C.  
AND BY THE STATE OF LOUISIANA, DEPARTMENT OF PUBLIC WORKS, BATON ROUGE 4, LOUISIANA  
A FOLDER DESCRIBING TOPOGRAPHIC MAPS AND SYMBOLS IS AVAILABLE ON REQUEST



U.S.G.S.  
FILE COPY  
TOPOGRAPHIC DIVISION

MERRYVILLE, TEX.-LA.  
N3045-W9330/15  
1959

RETURN TO:  
USGS AND HISTORICAL MAP ARCHIVES

JUN 27 1960  
2550