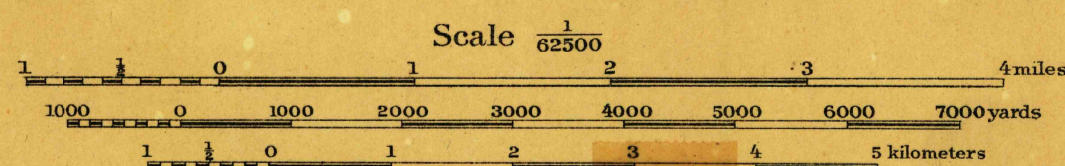




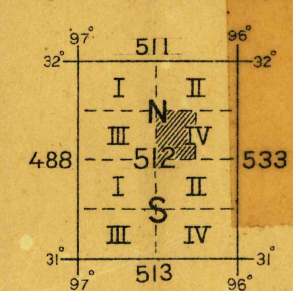
Prepared under the direction of Col. W. P. Stokey,
Corps of Engineers, U.S.A. Department Engineer,
Southern Department, 1919.
Compiled from Railroad Alignments and Profiles
and County Road Maps.
Completed under the direction of Major W. G. Caples,
Corps of Engineers, July and August, 1919.



Contour Interval 20 feet
Datum is mean sea level

NOTE: OFFICERS USING THIS MAP WILL MARK HEREON CORRECTIONS AND ADDITIONS WHICH COME
TO THEIR ATTENTION AND MAIL DIRECT TO "THE CHIEF OF ENGINEERS, WASHINGTON, D.C."

Engineer Reproduction Plant, U. S. Army, Washington Barracks, D.C.



TRUE NORTH
MAGNETIC NORTH
APPROXIMATE MEAN
DECLINATION 1920

TEXAS
S. Board on
Geographical Names