

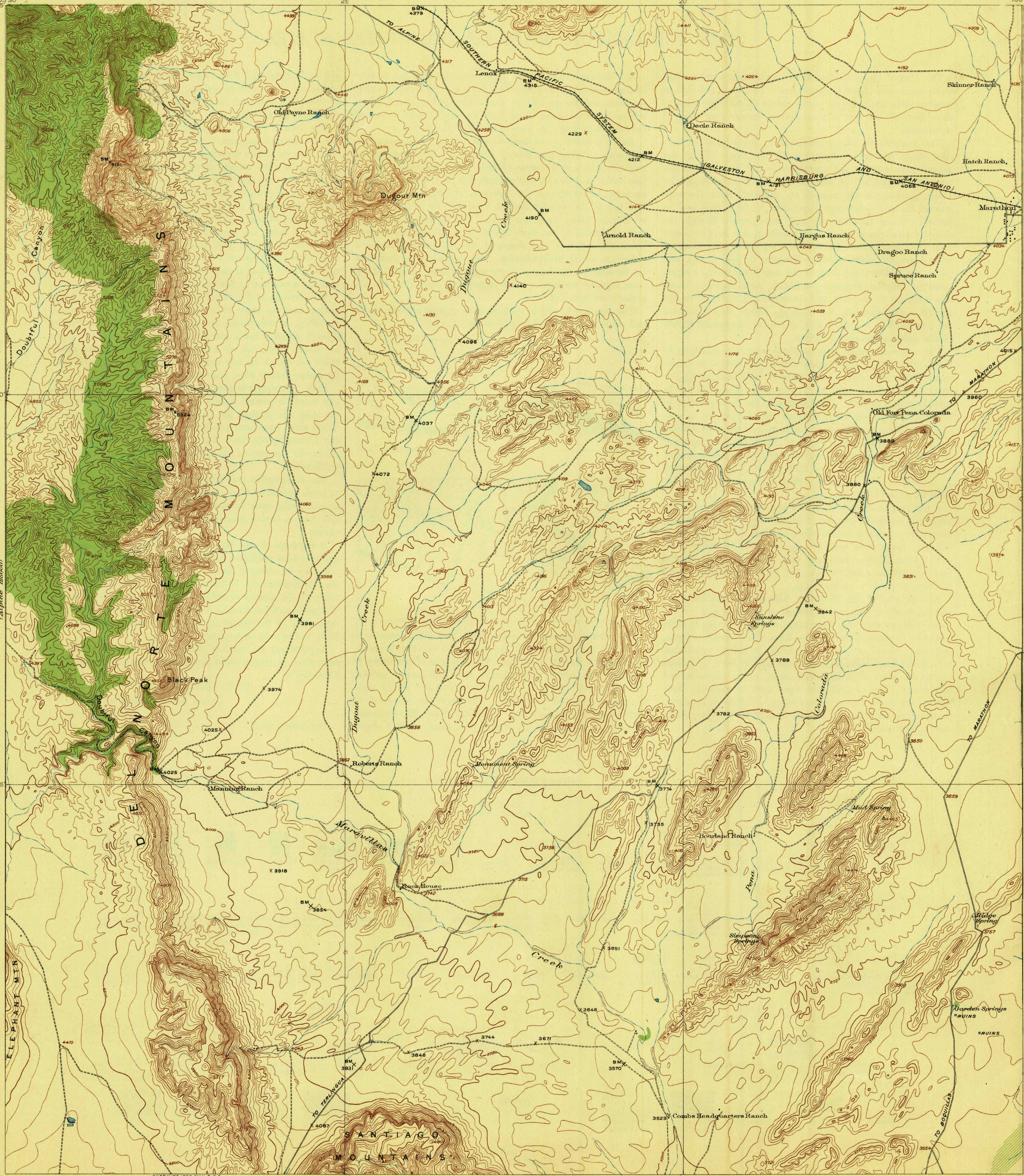
# TOPOGRAPHY

DEPARTMENT OF THE INTERIOR  
 ALBERT B. FALL, SECRETARY  
 U. S. GEOLOGICAL SURVEY  
 GEORGE OTIS SMITH, DIRECTOR

WAR DEPARTMENT  
 CORPS OF ENGINEERS, U. S. ARMY

THE UNIVERSITY OF TEXAS  
 R. E. VINSON, PRESIDENT  
 BUREAU OF ECONOMIC GEOLOGY AND TECHNOLOGY  
 J. A. UDDEN, DIRECTOR

TEXAS  
 (BREWSTER COUNTY)  
 MONUMENT SPRING QUADRANGLE

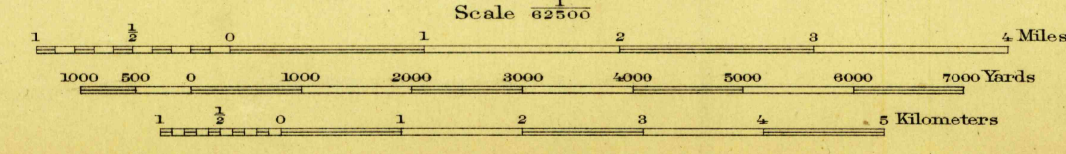


U. S. G. S.  
 FILE COPY  
 Inspection and Editing.

U. S. G. S.  
 FILE COPY  
 Inspection and Editing.

ENGRAVED 1920 BY U. S. G. S.  
 C. H. Birdseye, Chief Topographic Engineer.  
 T. G. Gardine, Geographer in charge.  
 Topography by R. C. Seitz, R. R. Monbeck,  
 W. B. Upton, Jr. and F. L. Whaley.  
 Control by U. S. Coast and Geodetic Survey,  
 S. M. Wilson, J. R. Ellis, D. S. Birkett, and James Dod.  
 Surveyed 1919-1920.

Upton  
 Seitz  
 Monbeck  
 Whaley



APPROXIMATE MEAN  
 DECLINATION, 1920

SEP 3 - 1921 (2520)

MONUMENT SPRING  
 Edition of 1921

Contour interval 50 feet.  
 Datum is mean sea level.

SURVEYED WITH THE WAR DEPARTMENT AND TEXAS.