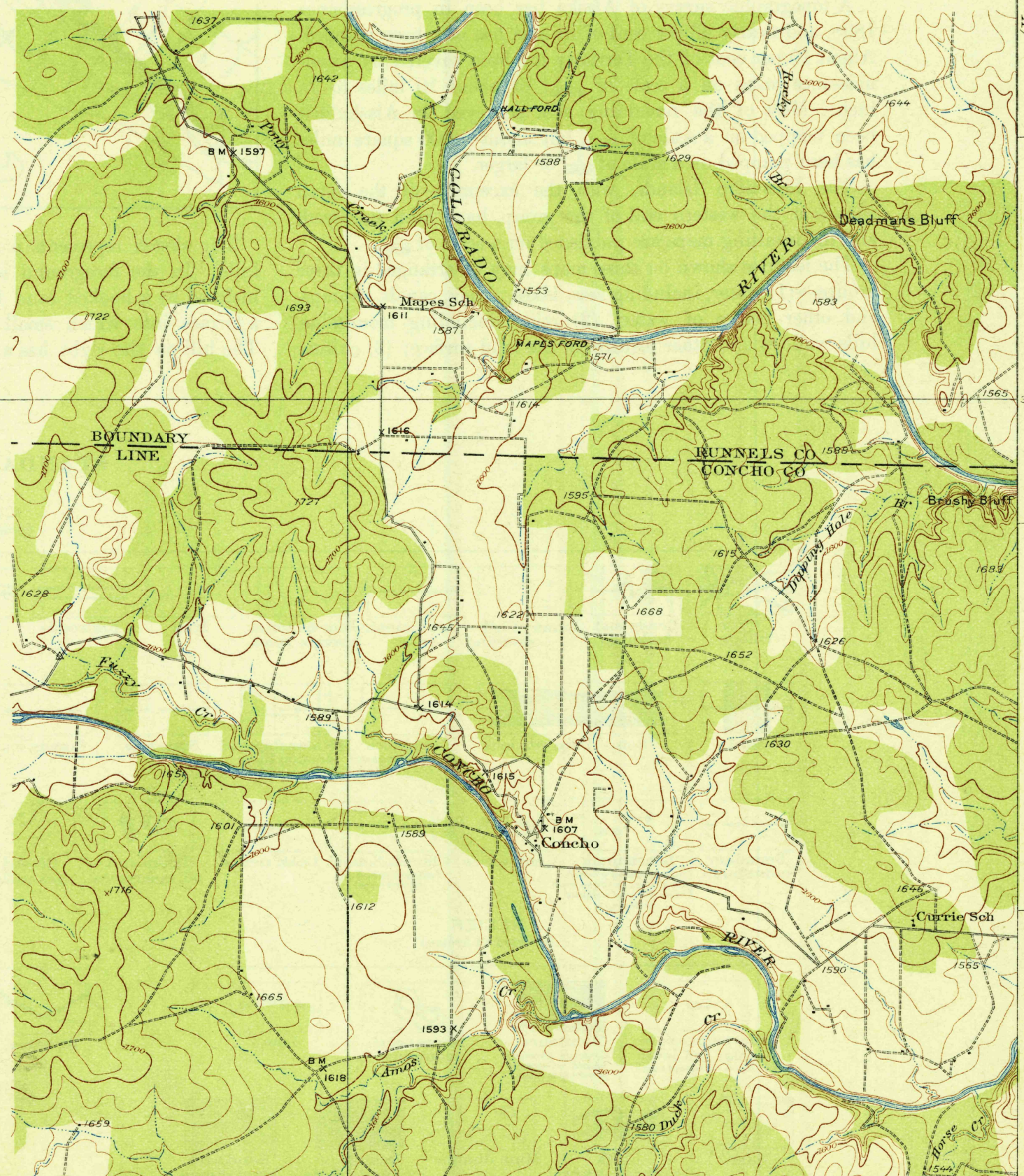


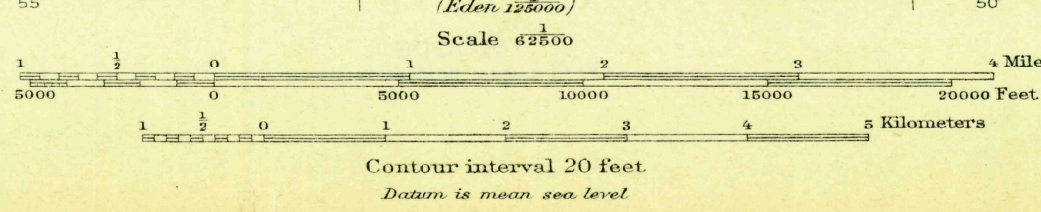
THIS AREA IS SHOWN ON THE MAP OF BALLINGER  
QUADRANGLE, SURVEYED IN 1890, SCALE 1:125,000



U. S. G. S.  
FILE COPY  
Inspection and Editing.

FILE COPY  
Inspection and Editing.

Topography by W.L. Miller, J.H. Wilke,  
T.F. Murphy, and C.C. Holden  
Culture and drainage in part compiled from aerial photographs  
taken by Air Corps, U.S. Army  
Control by U.S. Geological Survey  
Surveyed in 1921 and 1924-1925



USGS  
Historical File  
Topographic Division  
MAR 15 1932 (2040)  
POLYCONIC PROJECTION, NORTH AMERICAN DATUM  
5000 YARD GRID BASED UPON U.S. ZONE SYSTEM, D  
PAINT ROCK, TEX.  
Edition of 1932

Vertical scale on the right side of the map, showing distances in miles from 1 to 15.

Vertical scale on the left side of the map, showing distances in yards from 91500 to 100000.