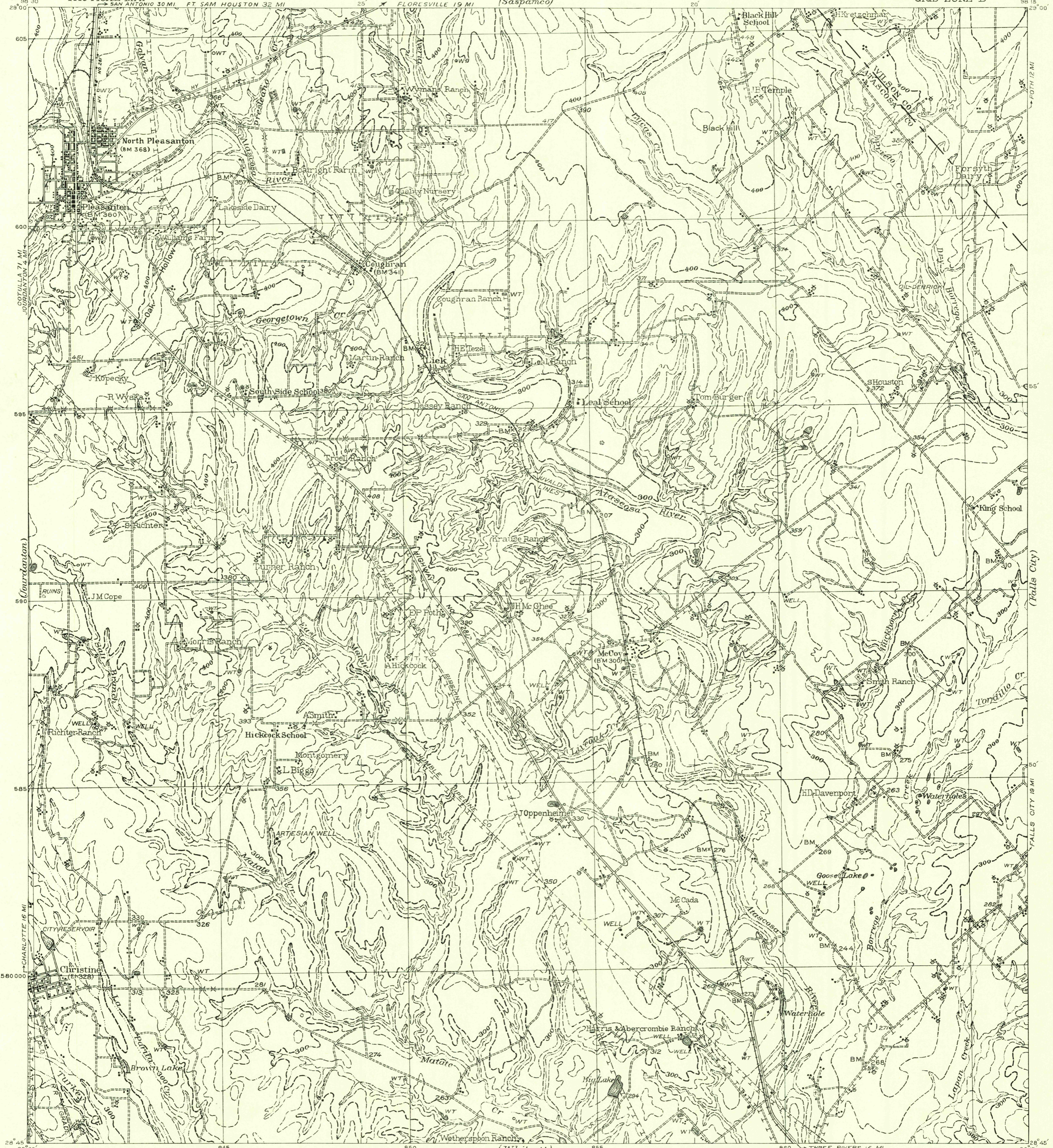


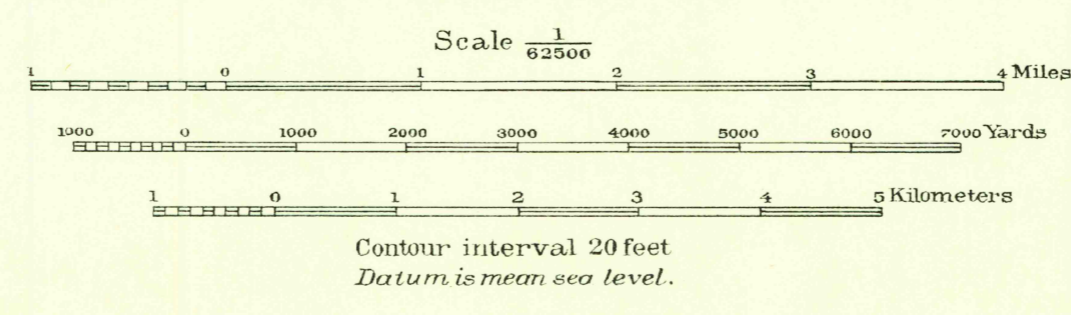
CORPS OF ENGINEERS, U.S. ARMY
TACTICAL MAP

TEXAS
PLEASANTON QUADRANGLE
GRID ZONE "D"



(Potter)

G.R. Lukesh, Colonel, C.E., Engineer, Eighth Corps Area.
Control by U.S.C. & G.S. and Corps of Engineers.
Compiled from aerial photographs taken by Air Corps, U.S. Army, July 9, 1935.
Field work by Eighth Engineers, Nov. 25, 1935 - Jan. 7, 1936.
A. Rehberg, Jr., Chief Draftsman.
P. Kenda, Senior Draftsman, Draftsman.
Compiled and drawn, 1935-36.
Polyconic projection. North American datum.
Contours determined by transit vertical angles
and stereoscopic examination of aerial photographs.
U.S. and State Highways corrected July, 1942.



(Floresville)

U.S.G.S.
FILE COPY
TOPOGRAPHIC DIVISION

APPROXIMATE MEAN
DECLINATION, 1940

TRUE NORTH
MAGNETIC NORTH

REPRINTED FROM MILITARY EDITION FOR CIVIL USE
FOR SALE BY U.S. GEOLOGICAL SURVEY, DENVER 2, COLORADO, OR WASHINGTON 25, D. C.
A FOLDER DESCRIBING TOPOGRAPHIC MAPS AND SYMBOLS IS AVAILABLE ON REQUEST

PLEASANTON, TEXAS. OCT 29 1956
N2845 - W9815 / 15