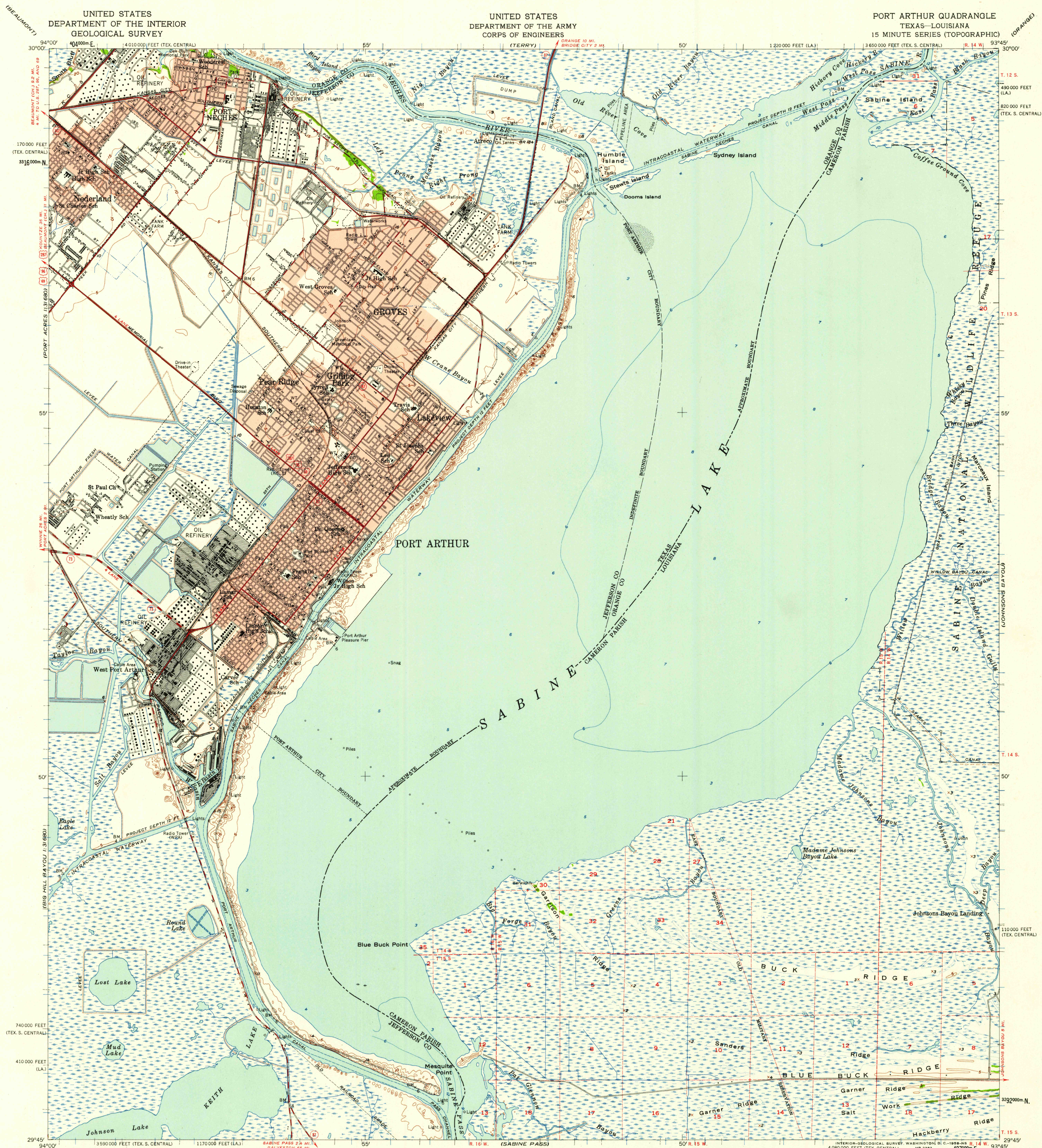


UNITED STATES
DEPARTMENT OF THE INTERIOR
GEOLOGICAL SURVEY

UNITED STATES
DEPARTMENT OF THE ARMY
CORPS OF ENGINEERS

PORT ARTHUR QUADRANGLE
TEXAS-LOUISIANA
15 MINUTE SERIES (TOPOGRAPHIC)



Compiled, edited, and published by the Geological Survey
Control by USGS, USC&GS, USCE, and TVA
Compiled in 1957 from the West of Greens Bayou, Port Arthur North,
Port Arthur South, and West of Johnsons Bayou 7.5 minute Army Map
Service quadrangles. Culture and drainage in part compiled from aerial
photographs taken 1942. Topography by planimetric surveys 1943. Culture revised
by the Geological Survey from aerial photographs taken 1956. Field check 1957
Hydrography compiled from USC&GS charts 533 (1955) and 517 (1956)
Polyconic projection. 1927 North American datum
10,000-foot grids based on Texas coordinate system, central and south central
zones, and Louisiana coordinate system, south zone
1000-meter Universal Transverse Mercator grid ticks, zone 15, shown in blue
Certain land lines unsurveyed. Dashed and lines indicate approximate locations
Red tint indicates areas in which only landmark buildings are shown

SCALE 1:62,500
1 2 3 4 5 6 7 8 9 10 11 12 13 14 15 16 17 18 19 20 21 22 23 24 25 26 27 28 29 30 31 32 33 34 35 36 37 38 39 40 41 42 43 44 45 46 47 48 49 50 51 52 53 54 55 56 57 58 59 60 61 62 63 64 65 66 67 68 69 70 71 72 73 74 75 76 77 78 79 80 81 82 83 84 85 86 87 88 89 90 91 92 93 94 95 96 97 98 99 100
CONTOUR INTERVAL 5 FEET
DATUM IS MEAN SEA LEVEL
DEPTH CURVES AND SOUNDINGS IN FEET-DATUM IS MEAN LOW WATER
SHORELINE SHOWN REPRESENTS THE APPROXIMATE LINE OF MEAN HIGH WATER
THE MEAN RANGE OF TIDE IS LESS THAN 1/2 FOOT
THIS MAP COMPLIES WITH NATIONAL MAP ACCURACY STANDARDS
FOR SALE BY U. S. GEOLOGICAL SURVEY, DENVER 2, COLORADO OR WASHINGTON 25, D. C.
AND BY THE STATE OF LOUISIANA, DEPARTMENT OF PUBLIC WORKS, BATON ROUGE 4, LOUISIANA
A FOLDER DESCRIBING TOPOGRAPHIC MAPS AND SYMBOLS IS AVAILABLE ON REQUEST

ROAD CLASSIFICATION
Heavy-duty ——— Light-duty ———
Medium-duty ——— Unimproved dirt ———
U. S. Route ——— State Route ———
This area also covered by 1:24,000 scale maps of
West of Greens Bayou, Port Arthur North, Port Arthur South,
and West of Johnsons Bayou, 7.5 minute quadrangles
surveyed 1957

U.S.G.S.
FILE COPY
TOPOGRAPHIC DIVISION

PORT ARTHUR, TEX.-LA.
N 2945-W 9345/15
1957

APR 23 1958

2865