

Mapped, edited and published by the Geological Survey

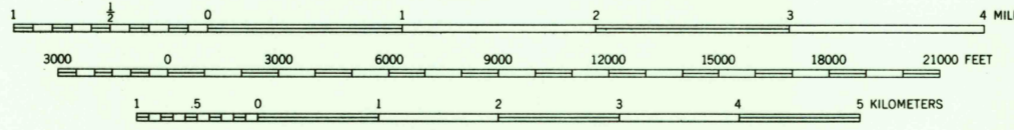
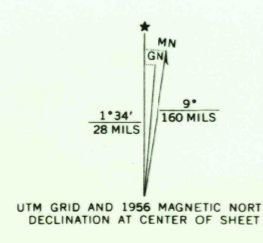
Control by USGS and USC&GS

Topography from aerial photographs by multiplex methods and by planimetric surveys 1956. Aerial photographs taken 1954

Polyconic projection. 1927 North American datum 10,000-foot grid based on Texas coordinate system, north central zone

Areas covered by dashed light-blue pattern are subject to controlled inundation

1000-meter Universal Transverse Mercator grid ticks, zone 14, shown in blue



CONTOUR INTERVAL 20 FEET
DATUM IS MEAN SEA LEVEL

THIS MAP COMPLIES WITH NATIONAL MAP ACCURACY STANDARDS
FOR SALE BY U. S. GEOLOGICAL SURVEY, DENVER, COLORADO 80225 OR WASHINGTON, D. C. 20242
A FOLDER DESCRIBING TOPOGRAPHIC MAPS AND SYMBOLS IS AVAILABLE ON REQUEST



ROAD CLASSIFICATION

Heavy-duty	Light-duty
Medium-duty	Unimproved dirt
U.S. Route	State Route

U.S.G.S.
FILE COPY
TOPOGRAPHIC DIVISION

QUINLAN, TEX.
N3245-W9600/15
1956
AMS 6749 I-SERIES V782

SEP 28 1965