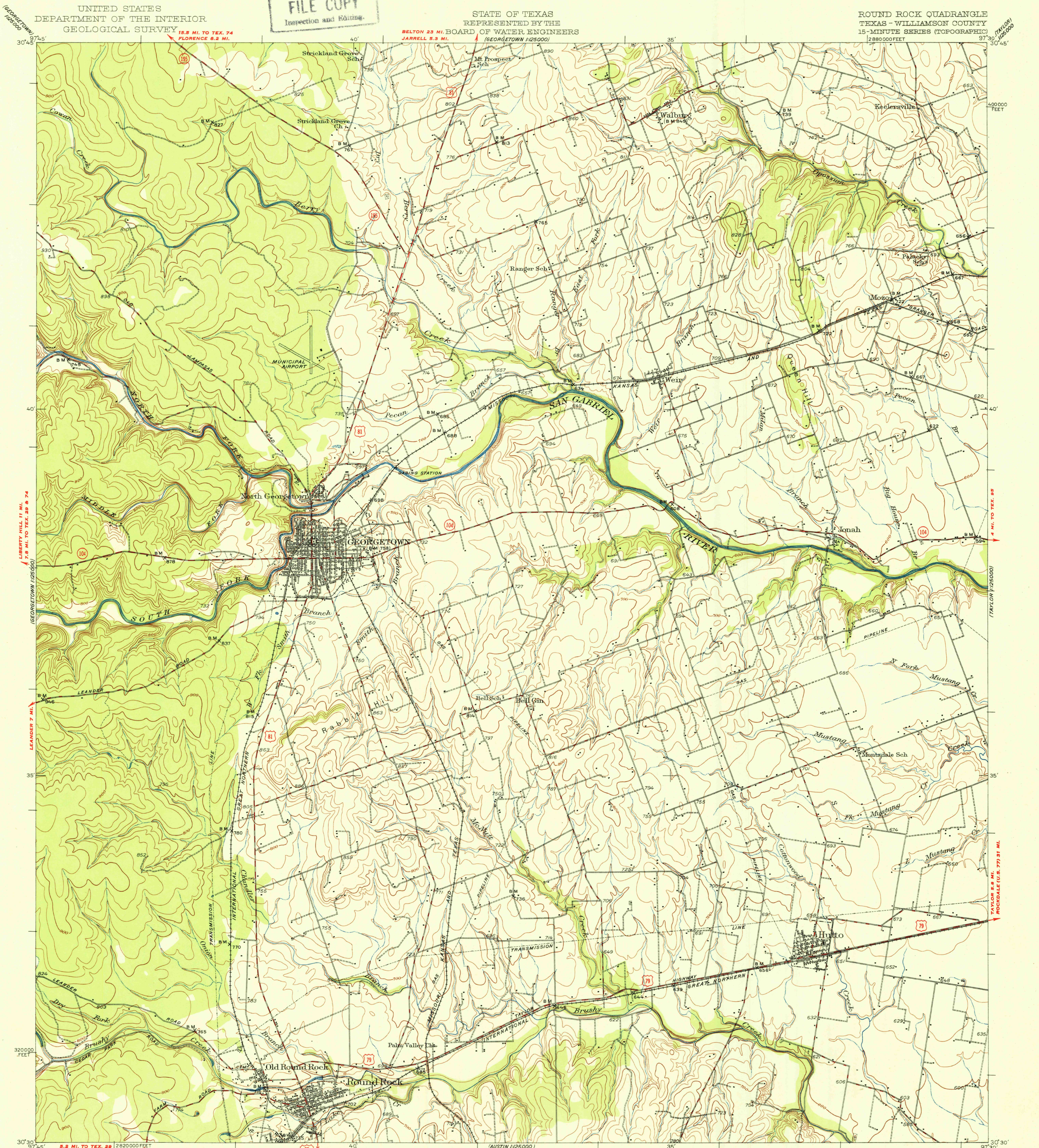


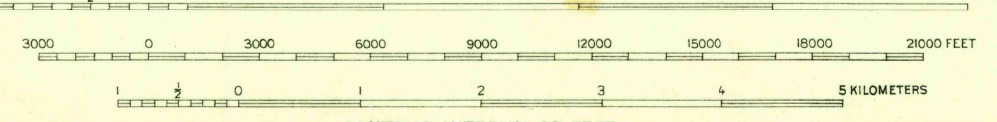
U.S.G.S.
FILE COPY
Inspection and Editing.



15.5 MI. TO TEX. 74
FLORENCE 0.2 MI.
19.5 MI. TO TEX. 28
2820000 FEET
Mapped, edited, and published by the Geological Survey
Culture and drainage in part compiled from
aerial photographs taken by Air Corps, U.S. Army
Surveyed by plane-table methods in 1923-1925
Revised in 1949
Polyconic projection, North American datum
10000-foot grid based on Texas coordinate system,
central zone

TRUE NORTH
MAGNETIC NORTH
APPROXIMATE MEAN
DECLINATION 1929

79 81
AUSTIN 18 MI.
SAN MARCOS 47 MI.
SCALE 1:62500



CONTOUR INTERVAL 20 FEET
DATUM IS MEAN SEA LEVEL

THIS MAP COMPLIES WITH NATIONAL MAP ACCURACY STANDARDS
FOR SALE BY U. S. GEOLOGICAL SURVEY, FEDERAL CENTER, DENVER, COLORADO OR WASHINGTON 25, D. C.
A FOLDER DESCRIBING TOPOGRAPHIC MAPS AND SYMBOLS IS AVAILABLE ON REQUEST

U.S.G.S.
FILE COPY
Inspection and Editing.

ROAD CLASSIFICATION
HARD-SURFACE ALL WEATHER ROADS DRY WEATHER ROADS
Heavy-duty 4 LANE LANE Improved dirt
Medium-duty 4 LANE LANE Unimproved dirt
Loose-surface, graded or narrow hard-surface
U. S. Route State Route

ROUND ROCK TEX.
N3030-W9730/15
EDITION OF 1951