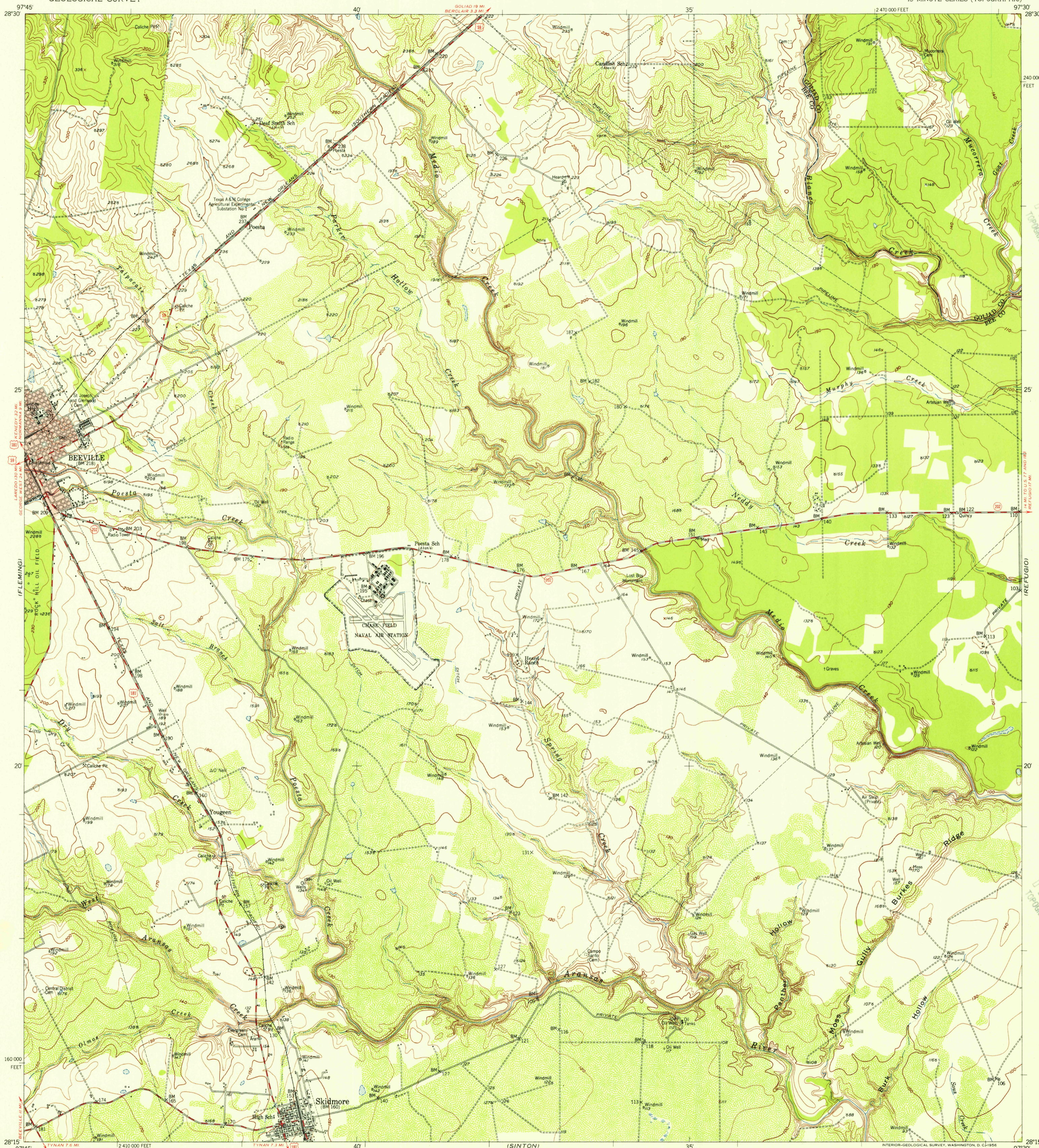


(GETTUS)

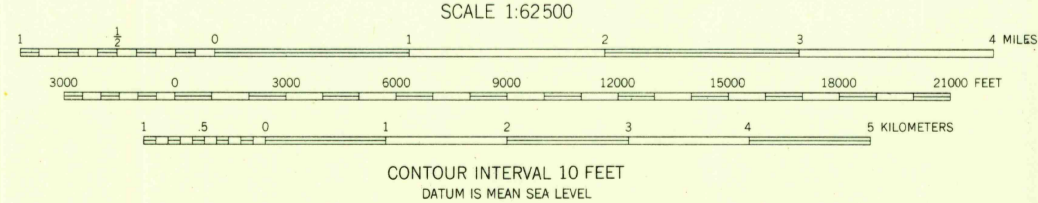


U.S.G.S.  
FILE COPY  
TOPOGRAPHIC DIVISION

U.S.G.S.  
FILE COPY  
TOPOGRAPHIC DIVISION

Mapped, edited, and published by the Geological Survey  
Control by USGS and USC&GS  
Culture and drainage in part compiled from aerial photographs  
taken 1952. Topography by planetable surveys 1954  
Polyconic projection. 1927 North American datum  
10,000-foot grid based on Texas coordinate system,  
south central zone  
Red tint indicates areas in which only  
landmark buildings are shown

TRUE NORTH  
MAGNETIC NORTH  
APPROXIMATE MEAN  
DECLINATION, 1954



ROAD CLASSIFICATION  
Heavy-duty ——— Light-duty ———  
Medium-duty ——— Unimproved dirt ———  
□ U. S. Route      ○ State Route

SKIDMORE, TEX.  
N2815—W9730/15  
1954

THIS MAP COMPLIES WITH NATIONAL MAP ACCURACY STANDARDS  
FOR SALE BY U.S. GEOLOGICAL SURVEY DENVER 2, COLORADO, OR WASHINGTON 25, D.C.  
A FOLDER DESCRIBING TOPOGRAPHIC MAPS AND SYMBOLS IS AVAILABLE ON REQUEST

NOV 16 1956  
2610