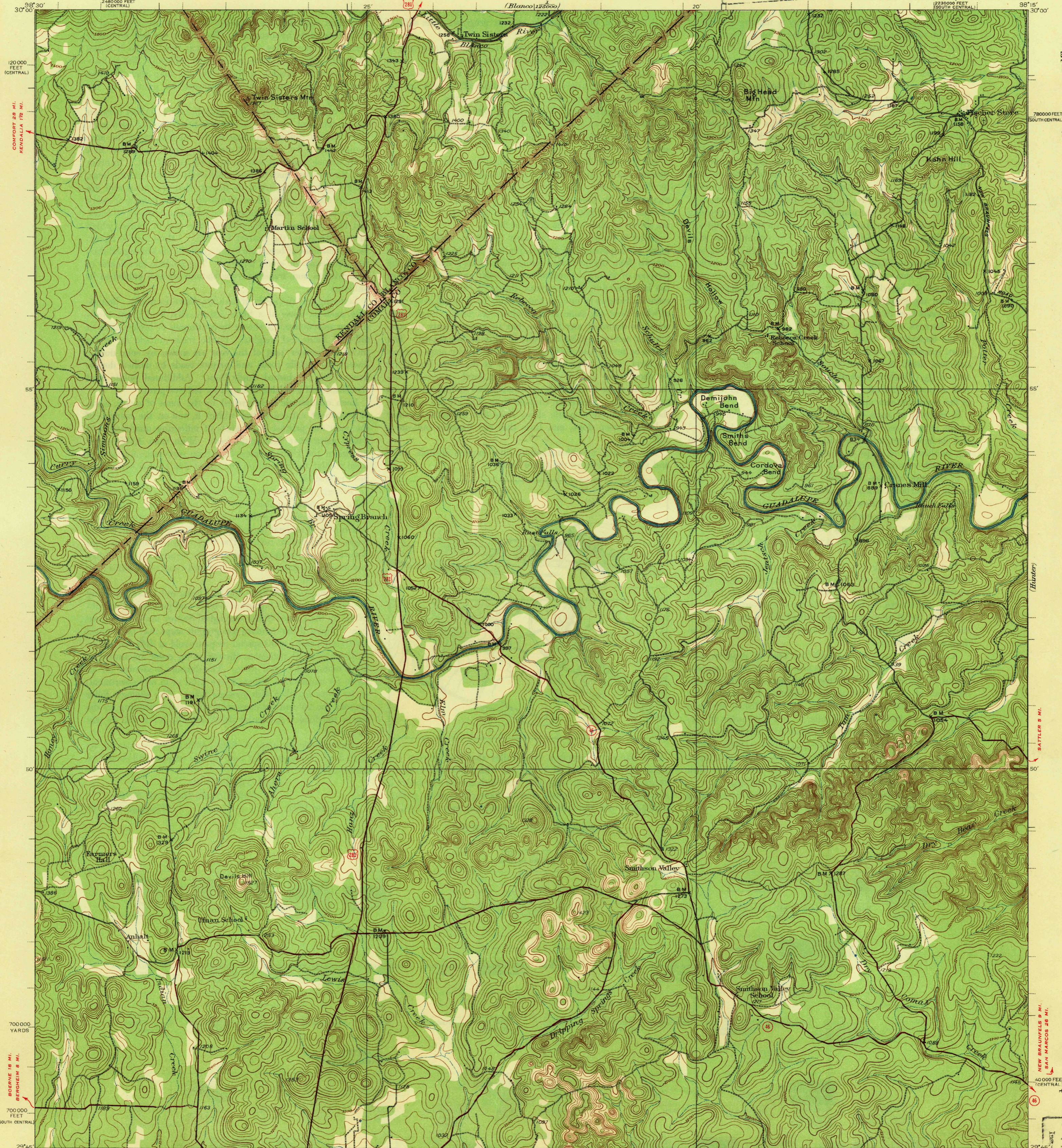
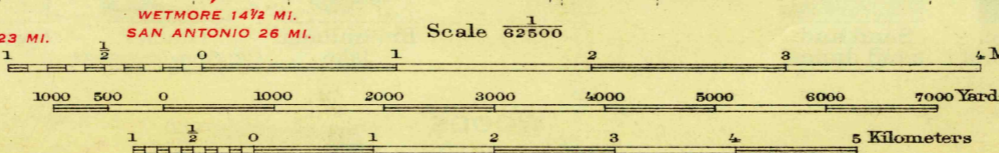


U. S. G. S.
FILE COPY



Topography by T. F. Murphy, R. J. Belton, W. C. Thompson, O. C. Cope, and Corps of Engineers, U.S. Army. Culture and drainage in part from aerial photographs by Air Service, U.S. Army. Surveyed in 1925 and 1928-29.

TO U. S. ROUTE NO. 281 4 MI.
SAN ANTONIO (CIVIC CENTER) 23 MI.
WETHORE 14 1/2 MI.
SAN ANTONIO 26 MI.



USGS
Historical File
Topographic Division

Geological Survey
1925
Cof. E.
1928-29

Polyconic projection, North American datum
5000 yard grid based on U.S. zone system, D
10000 foot grids based on Texas (Central) and
(South Central) rectangular coordinate systems

SMITHSON VALLEY, TEX.
Edition of 1940

Contour interval 20 feet.
Datum is mean sea level.

ROUTES USUALLY TRAVELED
HARD IMPERVIOUS SURFACES
OTHER SURFACE IMPROVEMENTS
U. S. ROUTE 1940
STATE ROUTE
FFR 18 1041

U. S. G. S.
FILE COPY