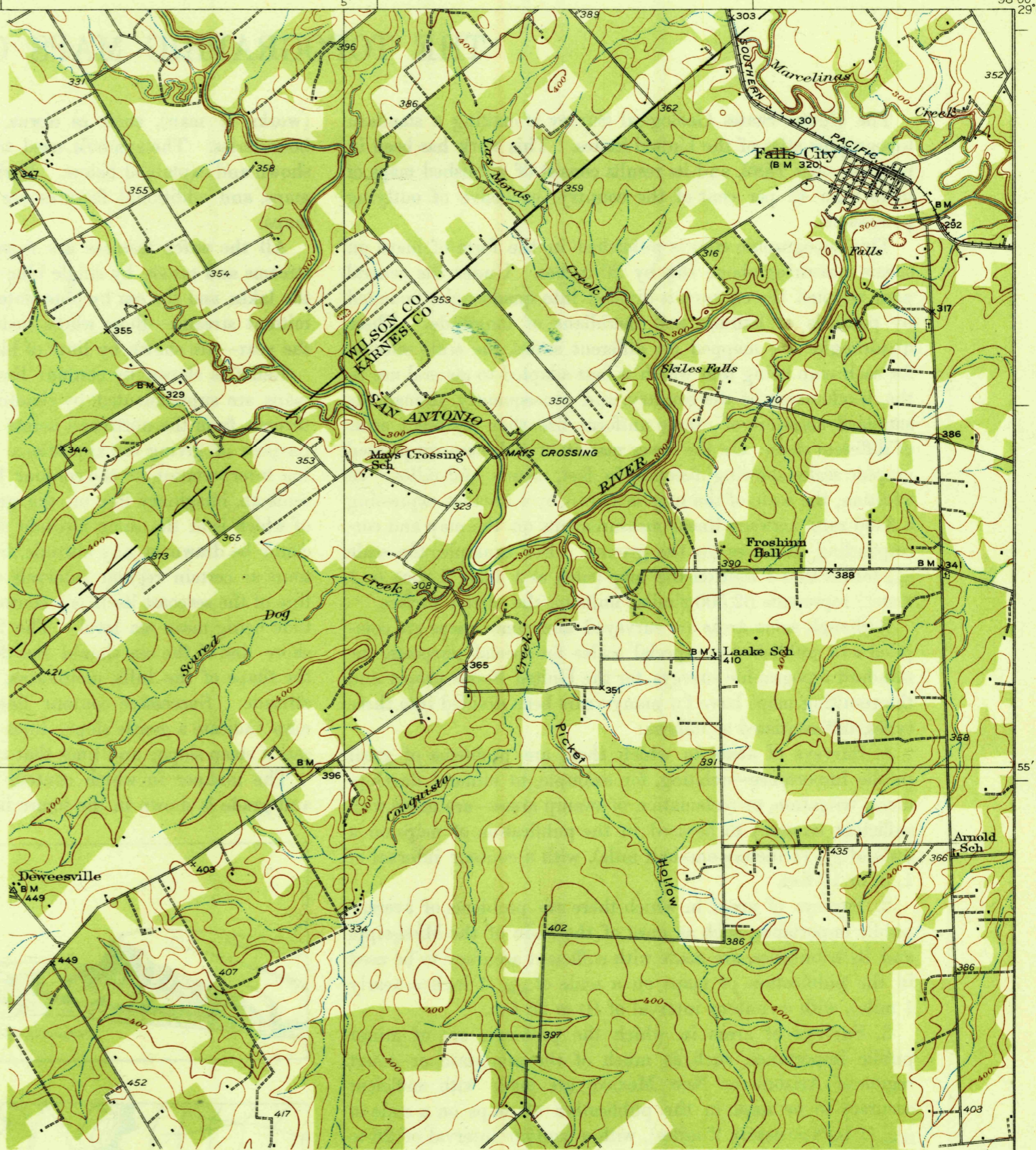


U. S. G. S.  
FILE COPY  
In Revision and Editing

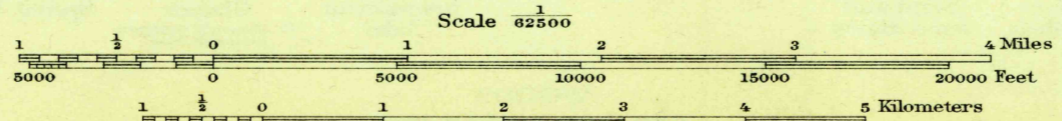


PRELIMINARY EDITION  
UNSURVEYED AREA

U. S. G. S.  
FILE COPY  
In Revision and Editing

Topography by R.H. Reineck and J.T. Schultz  
Culture and drainage in part compiled from aerial photographs  
taken by Air Corps U.S. Army  
Control by U.S. Geological Survey and  
U.S. Coast and Geodetic Survey  
Surveyed in 1925

TRUE NORTH  
MAGNETIC NORTH  
APPROXIMATE MEAN  
DECLINATION, 1925



USGS  
Historical File  
Topographic Division

Polyconic projection, North American datum  
5000 yard grid based upon U.S. zone system D

APR 21 1931 (1980)

TORDIA, TEX.  
Edition of 1931  
2500 3350 1390