

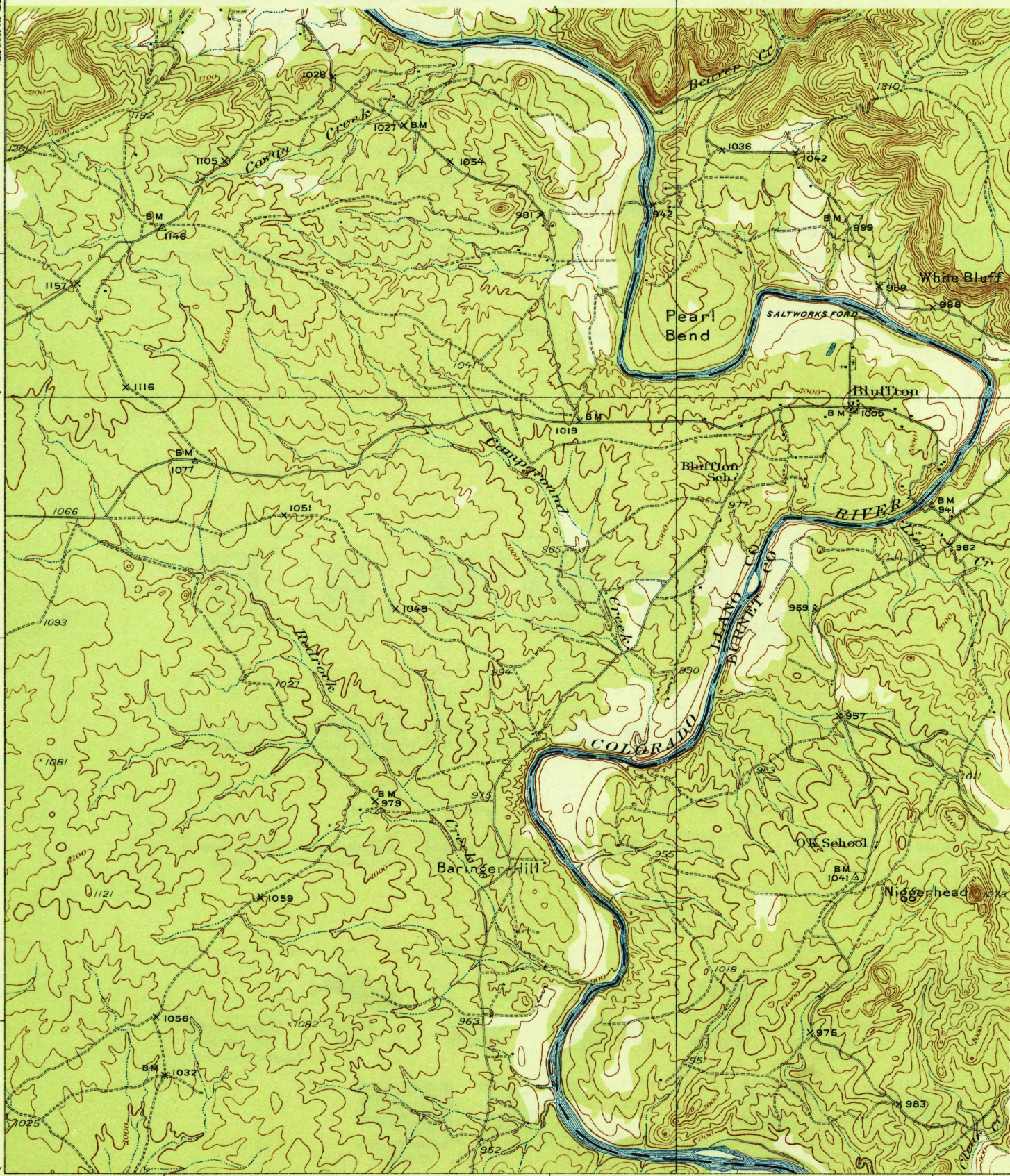
DEPARTMENT OF THE INTERIOR
U.S. GEOLOGICAL SURVEY

STATE OF TEXAS
BOARD OF WATER ENGINEERS
JOHN A. NORRIS, CHAIRMAN
C. S. CLARK, A. H. DUNLAP
(Lampasas 125000)

TEXAS
TOW QUADRANGLE (Lampasas 125000)

U. S. G. S.
FILE COPY
Inspection and Editing

THIS AREA IS SHOWN ON THE MAP OF BURNET
QUADRANGLE, SURVEYED IN 1900-01, SCALE 1:125,000



U. S. G. S.
FILE COPY
Inspection and Editing

Topography by W. B. Brewer and Crawford Dickey
Culture and drainage in part compiled from
aerial photographs taken by Air Corps, U.S. Army
Control by U.S. Geological Survey
Surveyed in 1925

TRUE NORTH
MAGNETIC NORTH
APPROXIMATE MEAN
DECLINATION, 1925

Scale 62500
1 2 3 4 Miles
5000 10000 15000 20000 Feet
1 2 3 4 5 Kilometers

Contour interval 20 feet
Datum is mean sea level

Polyconic projection, North American datum
5000 yard grid based upon U.S. zone system, D

JAN 14 1932 (2025)

TOW, TEX.
Edition of 1932.
2600:3300:1/49