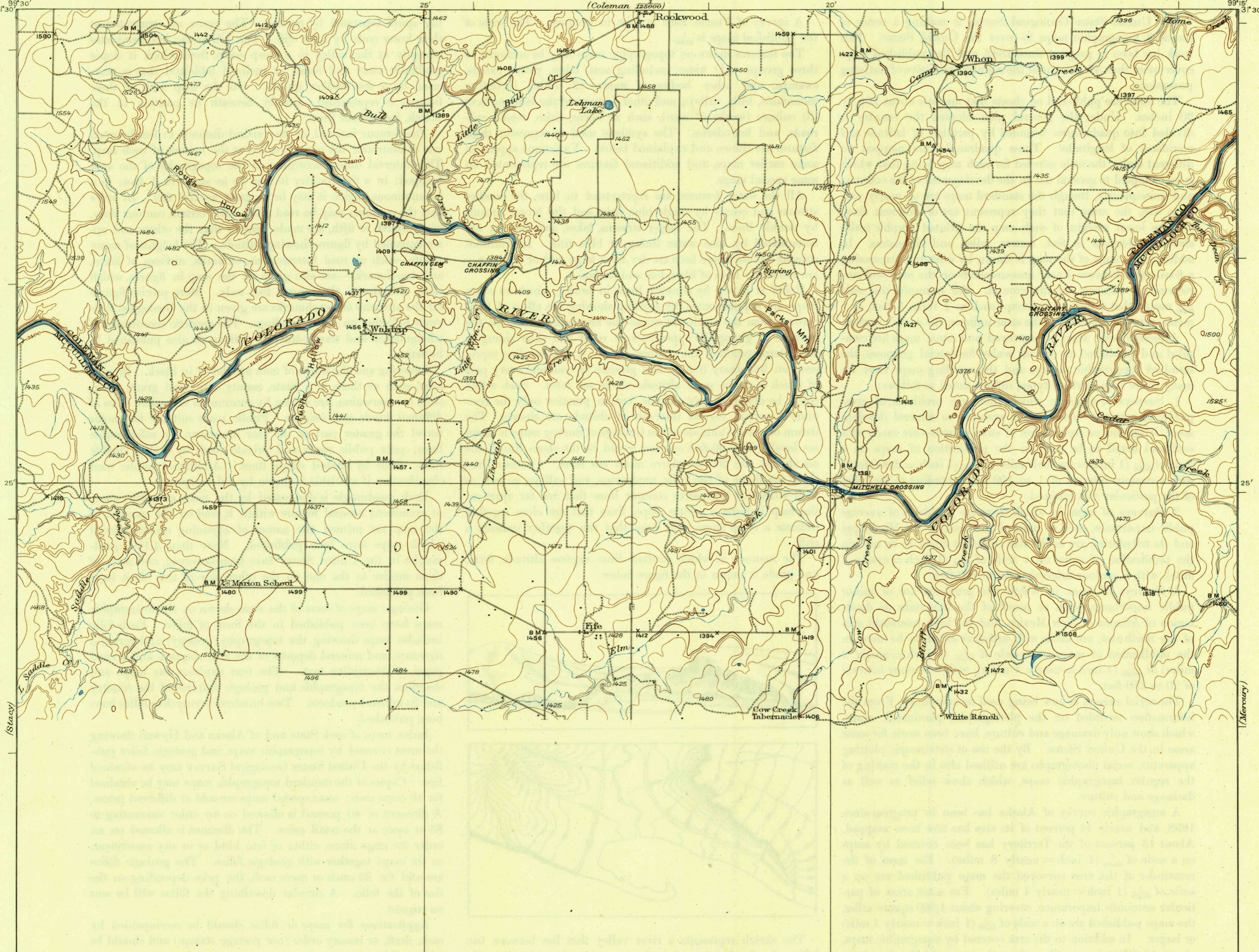


U. S. G. S.
FILE COPY
Inspection and Editing.

UNITED STATES
DEPARTMENT OF THE INTERIOR
GEOLOGICAL SURVEY

STATE OF TEXAS
REPRESENTED BY THE
BOARD OF WATER ENGINEERS
(Coleman 12500)

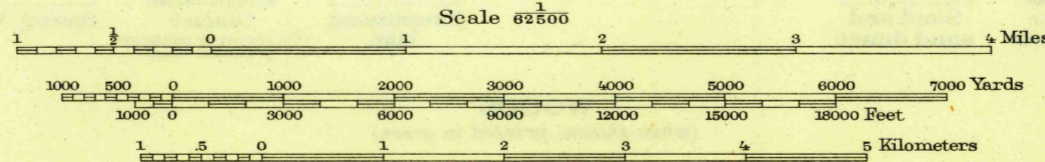
TEXAS
WALDRIP QUADRANGLE



THIS AREA IS SHOWN ON THE MAP OF BRADY
QUADRANGLE, SURVEYED IN 1886, SCALE 1:125,000

885 000
YARDS

Topography by R.H.Reineck and J.T.Schultz
Culture and drainage in part compiled from
aerial photographs taken by Air Corps U.S.Army
Surveyed in 1924-1925



Contour interval 20 feet
Datum is mean sea level

Polyconic projection, North American datum
5000 yard grid based upon U.S. zone system, D

U. S. G. S.
FILE COPY
Inspection and Editing.

WALDRIP TEX.
Edition of 1928
reprinted 1946
N3115-W9915/15

MAR 11 1946

2130