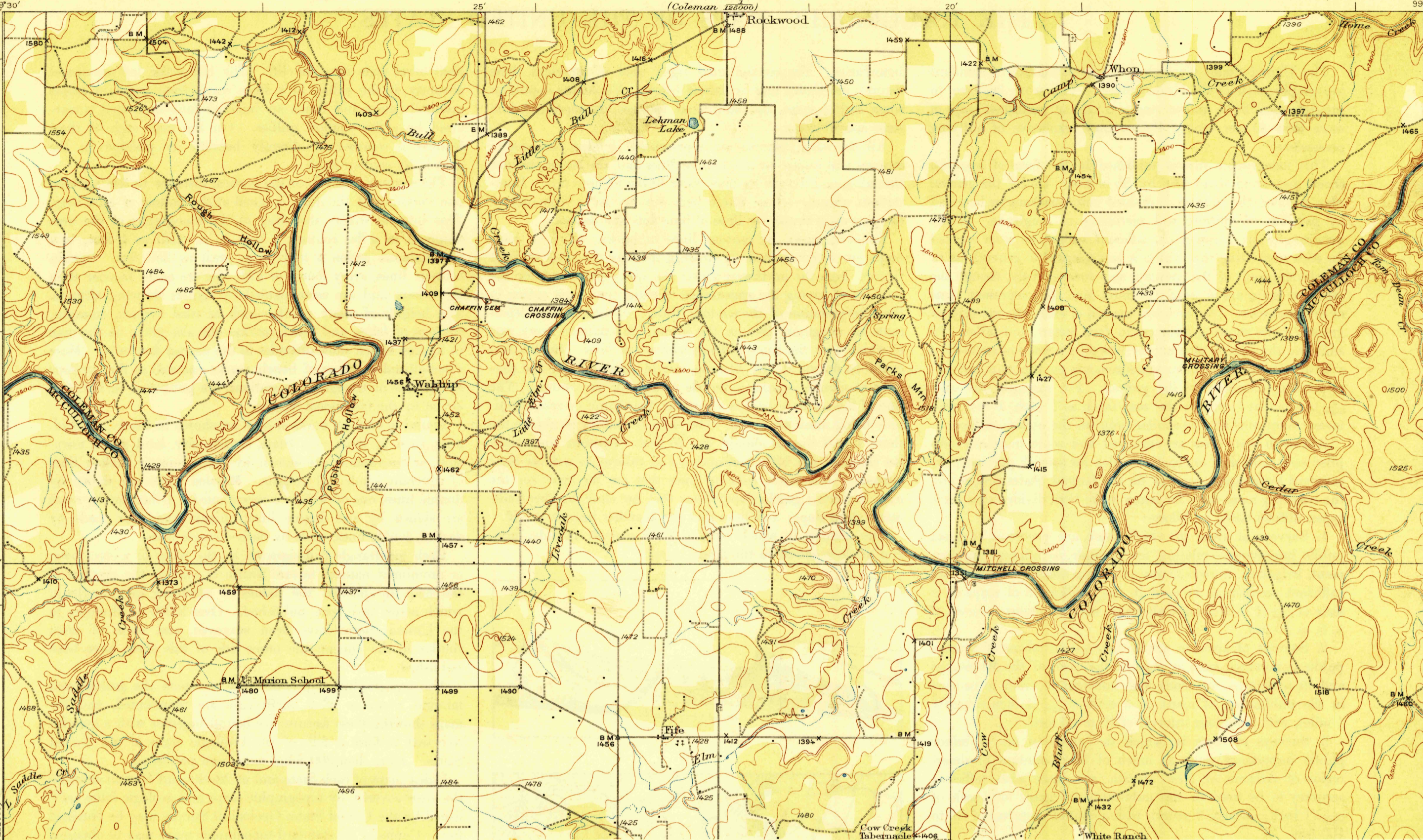


U. S. G. S.
FILE COPY
Inspection and Editing.

DEPARTMENT OF THE INTERIOR
U. S. GEOLOGICAL SURVEY

STATE OF TEXAS
BOARD OF WATER ENGINEERS
JOHN A. NORRIS, CHAIRMAN
C. S. CLARK, A. H. DUNLAP
(Coleman 186000)

TEXAS
WALDRIP QUADRANGLE

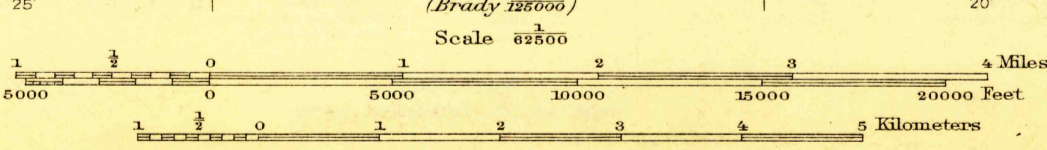


THIS AREA IS SHOWN ON THE MAP OF BRADY
QUADRANGLE, SURVEYED IN 1886, SCALE 1:125,000

U. S. G. S.
FILE COPY
Inspection and Editing.

Topography by R. H. Reineck and J. T. Schultz
Culture and drainage in part compiled from
aerial photographs taken by Air Corps U.S. Army
Control by U.S. Geological Survey
Surveyed in 1924-1925

Polyconic projection, North American datum
5000 yard grid based upon U.S. zone system, D



USGS
Historical File
Topographic Division

WALDRIP, TEX.
Edition of 1928
2600:1800:749

AUG 9 - 1928 (1950)

1950