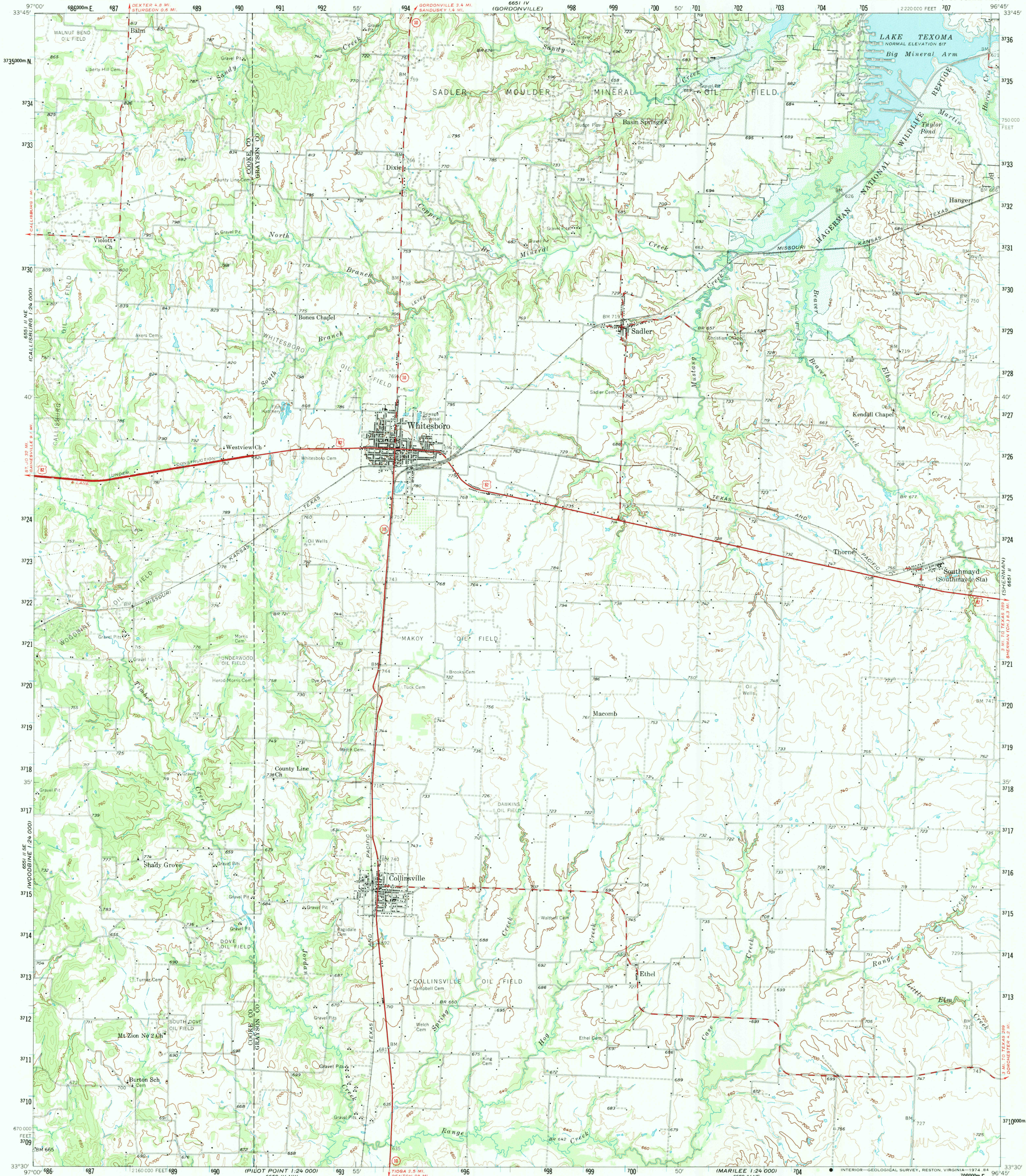


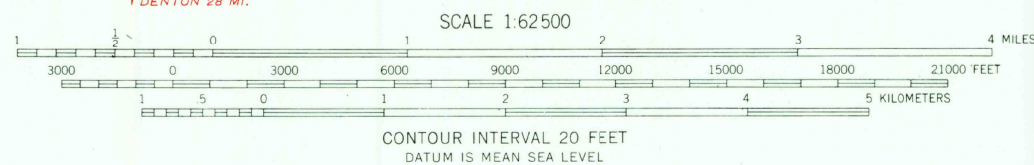
UNITED STATES  
DEPARTMENT OF THE INTERIOR  
GEOLOGICAL SURVEY

WHITESBORO QUADRANGLE  
TEXAS  
15 MINUTE SERIES (TOPOGRAPHIC)



Maped, edited, and published by the Geological Survey  
Control by USGS, USC&GS, and USCE  
Topography from aerial photographs by photogrammetric methods  
Aerial photographs taken 1955-1956. Field check 1958  
Polyconic projection. 1927 North American datum  
10,000-foot grid based on Texas coordinate system,  
north central zone  
1000-meter Universal Transverse Mercator grid ticks,  
zone 14, shown in blue  
Areas covered by dashed light-blue pattern  
are subject to controlled inundation  
Maximum elevation 640 feet. Normal elevation 617

UTM GRID AND 1983 MAGNETIC NORTH  
DECLINATION AT CENTER OF SHEET



ROAD CLASSIFICATION  
Heavy-duty ——— Light-duty ———  
Medium-duty ——— Unimproved dirt ———  
U.S. Route — State Route



WHITESBORO, TEX.  
N3330-W9645/15

1958  
AMS 6651 III—SERIES V782

RETURN TO:  
USGS AND HISTORICAL MAP ARCHIVES

MAR 30 1984