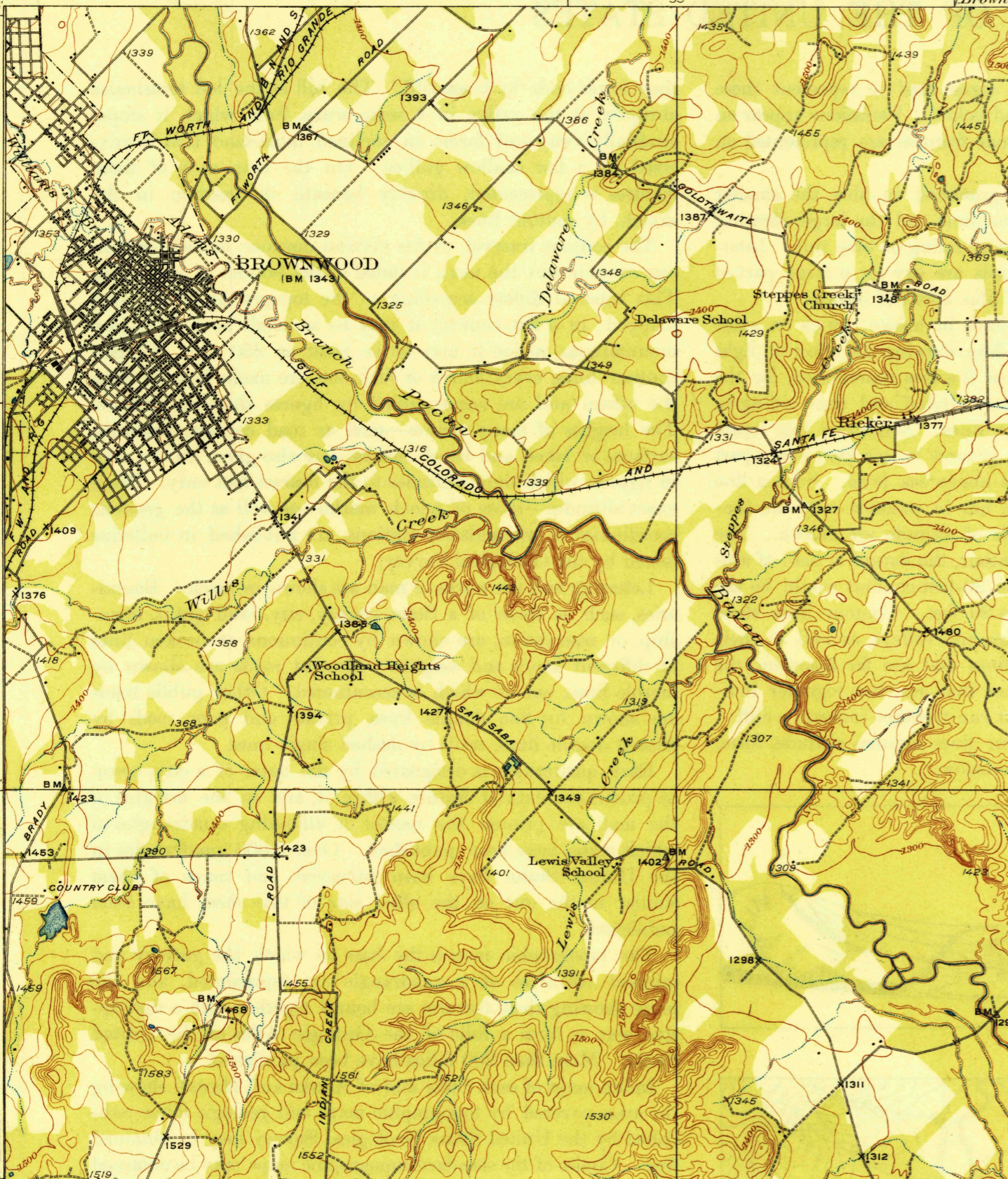
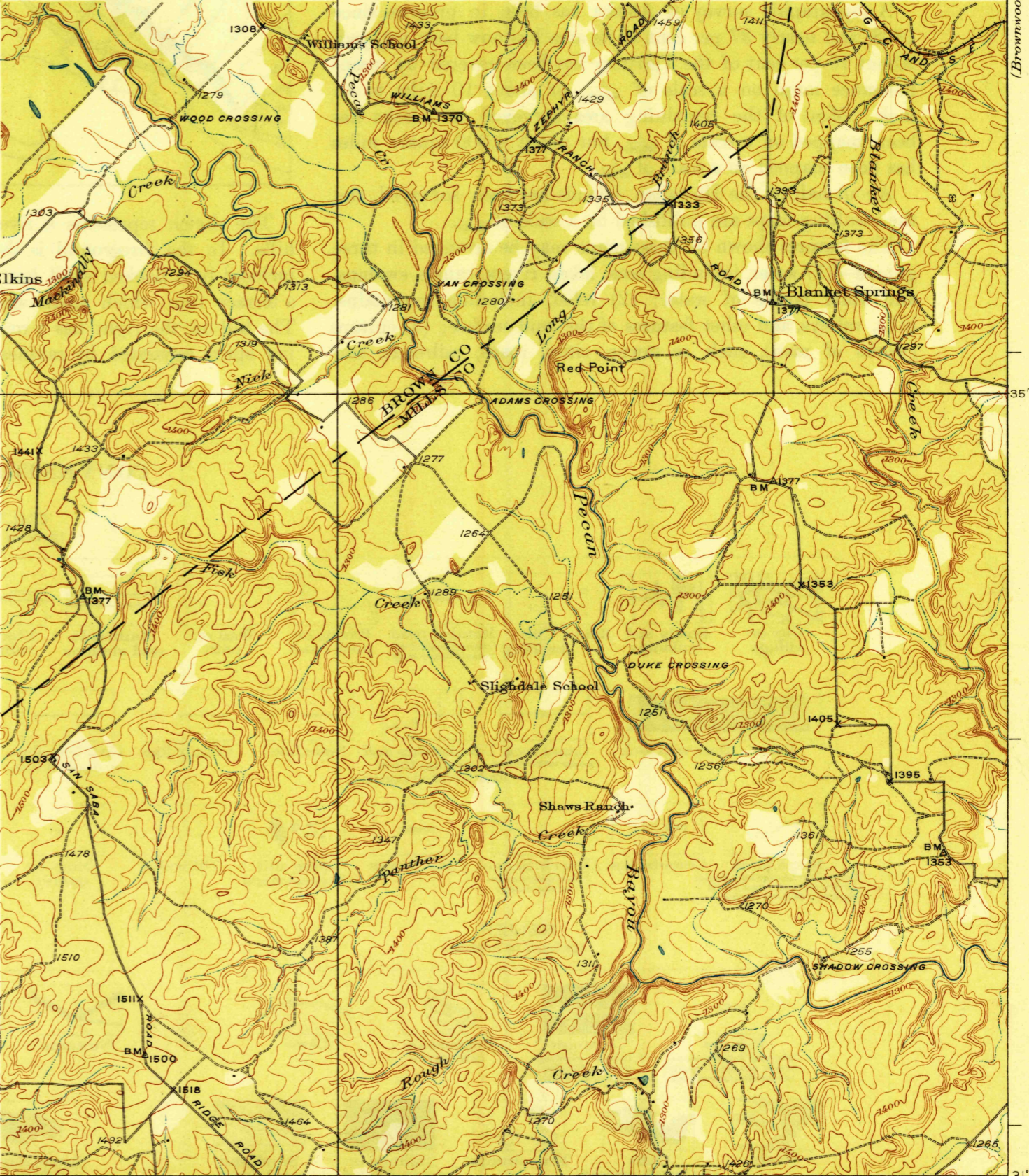


DEPARTMENT OF THE INTERIOR
 U.S. GEOLOGICAL SURVEY

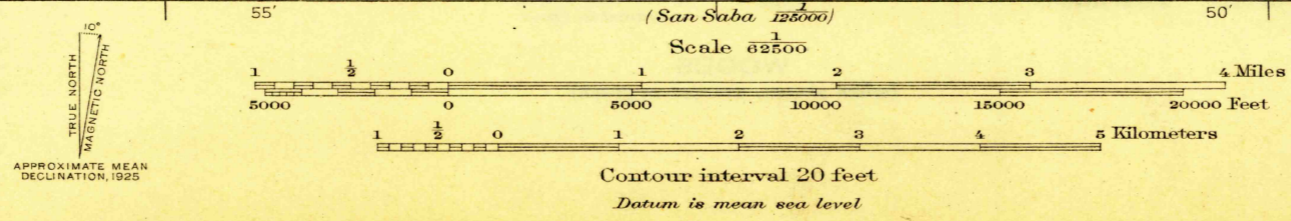


THIS AREA IS SHOWN ON THE MAP OF BROWNWOOD QUADRANGLE,
 SURVEYED IN 1887, SCALE 1:125,000



THIS AREA IS SHOWN ON THE MAP OF BROWNWOOD QUADRANGLE,
 SURVEYED IN 1887, SCALE 1:125,000

Topography by A. J. Ugle and W. F. Chenault
 Culture and drainage in part compiled from aerial photographs
 taken by Air Corps, U. S. Army
 Control by U. S. Geological Survey
 Surveyed in 1924-1925



Polyconic projection, North American datum
 5000 yard grid based upon U.S. zone system, D

U.S.G.S. FILE COPY
 Inspection and Editing.

ZEPHYR, TEX.
 Edition of 1928

MAR 20 1929 (1940) 1940