
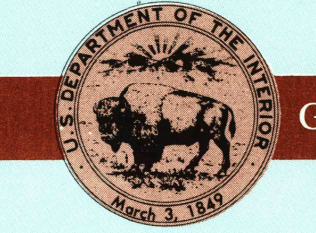


1:100 000-scale metric topographic map of Fish Springs UTAH



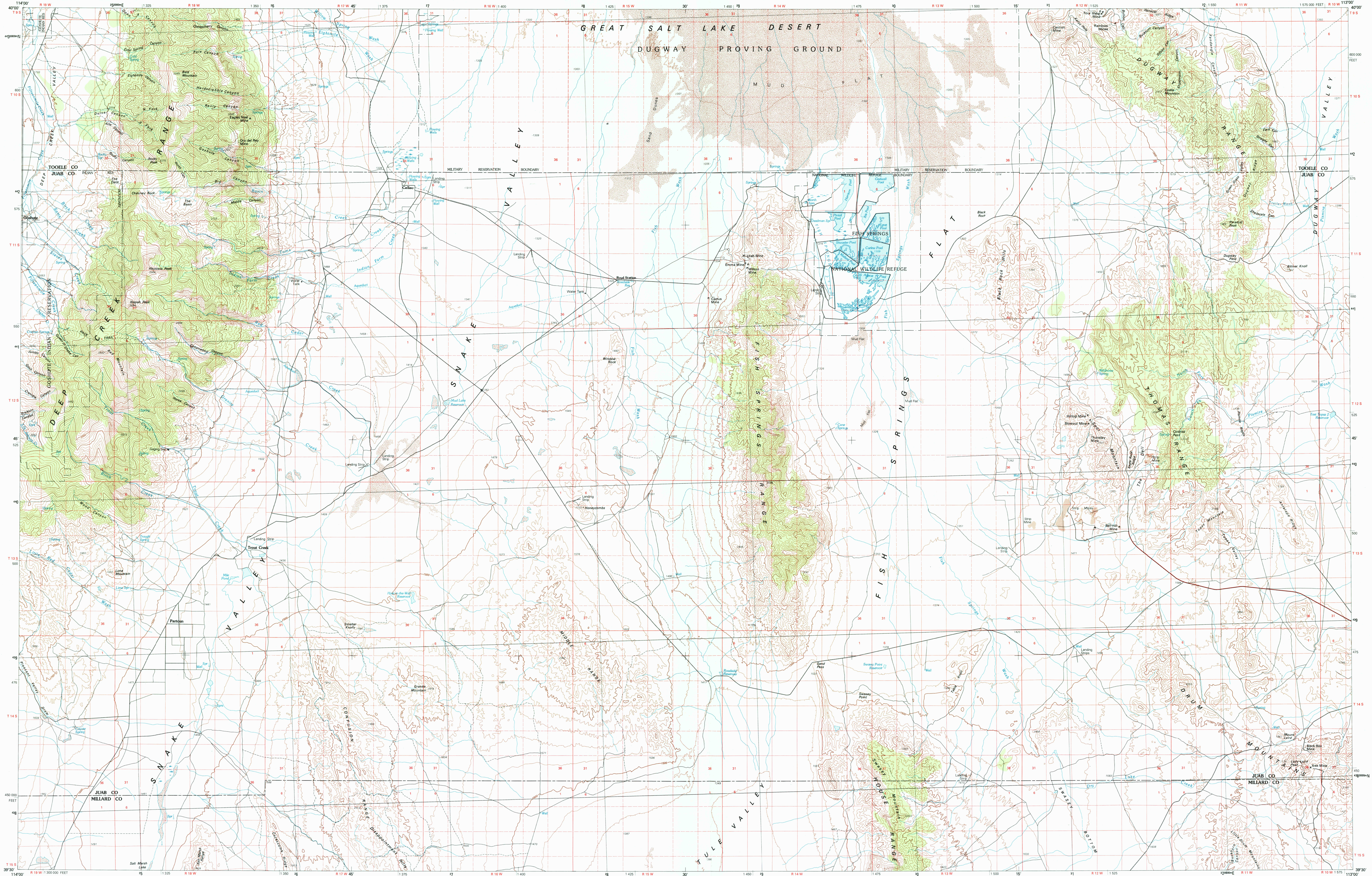
30 X 60 MINUTE QUADRANGLE SHOWING

- Contours and elevations in meters
- Highways, roads and other manmade structures
- Water features
- Woodland areas
- Geographic names



GEOLOGICAL SURVEY

1979



Produced by the United States Geological Survey in cooperation with the Bureau of Land Management

Compiled from USGS 1:24 000 and 1:62 500-scale topographic maps dated 1953-1972. Partially revised from aerial photographs taken 1975 and other source data. Revised information not field checked. Map edited 1979

Projection and 10 000-meter grid, zone 12: Universal Transverse Mercator
25 000-foot grid ticks based on Utah coordinate system, central zone. 1927 North American datum
To place on the predicted North American Datum 1983 move the projection lines 10 meters north and 70 meters east
There may be private inholdings within the boundaries of the National or State reservations shown on this map

CONTOUR INTERVAL 50 METERS
NATIONAL GEODETIC VERTICAL DATUM OF 1929

THIS MAP COMPLIES WITH NATIONAL MAP ACCURACY STANDARDS

FOR SALE BY U.S. GEOLOGICAL SURVEY,
P.O. BOX 25286, DENVER, COLORADO, 80225

CONVERSION TABLE		DECLINATION DIAGRAM		ADJOINING MAPS			
Meters	Feet	GN	Mg	1	2	3	
1	3.2808			4	5		
2	6.5617			6	7	8	
3	9.8425						
4	13.1234						
5	16.4042						
6	19.6850						
7	22.9659						
8	26.2467						
9	29.5275						
10	32.8084						

To convert meters to feet multiply by 3.2808
To convert feet to meters multiply by 0.3048

UTM grid convergence (GN) and 1975 magnetic declination (Mg) at center of map diagram is appropriate

1 Curlew
2 Wildcat Mountain
3 Snake Valley
4 Kaiparowits
5 Wahatch
6 Fish Springs
7 Snake Valley
8 Delta

RECEIVED
MAY 31 2000
USGS/BLM
HISTORICAL MAP ARCHIVES

ISBN 0-607-54644-7
9 780607 546445

Topographic Map Symbols

Primary highway, hard surface	
Secondary highway, hard surface	
Light duty road, principal street, hard or improved surface	
Other road or street, trail	
Route marker: Interstate; U. S.; State	
Railroad: standard gage; narrow gage	
Bridge: overpass; underpass	
Tunnel: road; railroad	
Bank up area, locality, elevation	
Airport; landing field; landing strip	
National boundary	
State boundary	
County boundary	
National or State reservation boundary	
Land grant boundary	
U. S. public lands survey; range, township; section	
Range, township; section line; protracted	
Power transmission line; pipeline	
Dam; dam with lock	
Canal; building	
Windmill; water well; spring	
Mine shaft; adit or cave; mine; quarry; gravel pit	
Campground; picnic area; U. S. location monument	
Ruins: cliff dwelling	
Distorted surface: strip mine, lava, sand	
Contours: index; intermediate; supplementary	
Bathymetric contours: index; intermediate	
Stream, lake: perennial; intermittent	
Rapids, large and small; falls, large and small	
Area to be submerged; marsh, swamp	
Land subject to controlled inundation; woodland	
Sand; mangrove	
Orchard; vineyard	